

Southlands Avenue, Penketh, £340,000



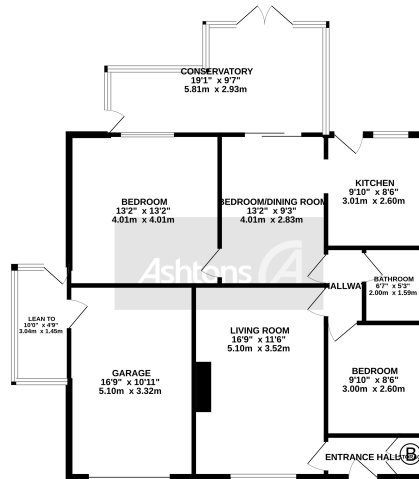
A fantastic opportunity to purchase this true bungalow in the sought after location of Penketh. This property has had a number of improvements and is ready for your family to move in and enjoy.

 x 2  x 1

See more of this house at ashtons.net



GROUND FLOOR
1117 sq.ft. (103.7 sq.m.) approx.



TOTAL FLOOR AREA: 1117 sq.ft. (103.7 sq.m.) approx.
© 2018 Ashtons Ltd. All rights reserved. This is a preliminary floor plan and is not intended to be used as a legal document. It is provided for information only and does not constitute an offer. The actual floor plan may vary slightly from the one shown. The agent's liability is limited to the information provided in this document. The agent's liability is limited to the information provided in this document. The agent's liability is limited to the information provided in this document.

This beautifully presented bungalow has undergone a series of changes to improve its functionality by previous owners over the years. For those unfamiliar with its location, the property is tucked away into a secluded cul-de-sac within Penketh and provides a good range of amenities within close walking distance. Over one floor this true bungalow comprises; an entrance porch with a storage cupboard, a spacious lounge, an open-plan dining area (formally bedroom three) open to the kitchen, and a conservatory leading to the master bedroom. At the rear of the property, there is a stunning rear conservatory that is surrounded by gardens. Externally the rear of the property is extremely private and has been completed to a low-maintenance finish with both planted and seating areas. The front has off-road parking via the driveway and access to the garage. Call us now for more details.



www.ashtons.net



Fixtures and fittings: A list of the fitted carpets, curtains, light fittings and other items fixed to the property which are included in the sale (or may be available by separate negotiation) will be provided by the Seller's Solicitors. **Important Notice:** 1. Particulars: These particulars are not an offer or contract, nor part of one. You should not rely on statements by Ashtons in the particulars or by word of mouth or in writing ("information") as being factually accurate about the property, its condition or its value. Neither Ashtons nor any joint agent has any authority to make any representations about the property, and accordingly any information given is entirely without responsibility on the part of the agents, seller(s) or lessor(s). 2. Photos, Videos etc: The photographs, property videos and virtual viewings etc. show only certain parts of the property as they appeared at the time they were taken. Areas, measurements and distances given are approximate only. 3. Regulations etc: Any reference to alterations to, or use of, any part of the property does not mean that any necessary planning, building regulations or other consent has been obtained. A buyer or lessee must find out by inspection or in other ways that these matters have been properly dealt with and that all information is correct. 4. To find out how we process Personal Data, please refer to our Group Privacy Statement and other notices at <https://www.ashtons.net/privacy-policy/>