



2 King Edward Bay Apartments, Sea Cliff Road, Onchan, Isle of Man. IM3 2JE

Sea facing first floor two bedroom purpose built apartment recently updated throughout to a high standard including new shower room, spacious en-suite bathroom, brand new German design kitchen, new carpets, new decoration throughout, built in storage plus additional storage unit and covering parking space for one car.



£399,950 Leasehold

PROPERTY DESCRIPTION

Welcome to a stunning two bedroom sea facing apartment in Onchan.

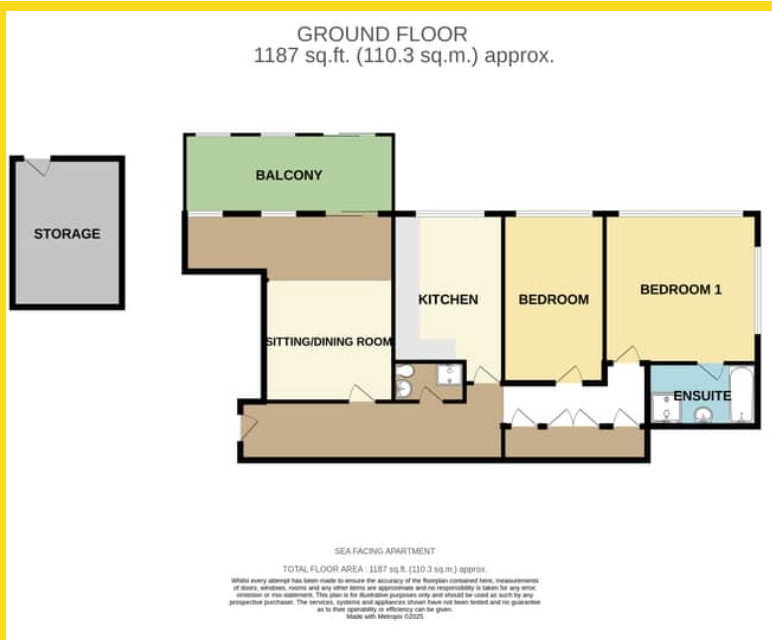
This stunning modern 2-Double bedroom sea-facing apartment boasts sea views from each room. A completely renovated interior, featuring an immaculate and spacious living-dining area that opens directly onto a private balcony with breathtaking coastal views. The finish is excellent.

The apartment is equipped with a new German kitchen, a contemporary shower room, and includes covered parking for one car, along with a safe storage area and additional storage space on the first floor.

The master bedroom offers great space and is finished beautifully throughout, it also includes a stunning en-suite bathroom with shower, slipper bath, W.C. and wash hand basin. Attractive floor tiles and lighting,

FEATURES

- Superb coastal location with stunning views over the bay
- Spacious Living/Dining Room with doors leading to a Private Terrace
- New German Kitchen with large feature sea facing arched window
- 2 Double Bedrooms Facing the Coast
- High standard throughout the apartment
- Covered parking space and Storage Unit
- Gas Fired Central Heating & uPVC double glazed,
- No Onward Chai
- Close to Amenities of Douglas & Onchan
- Additional Storage Area
- Watch our Video



Property Images



DISCLAIMER: Whilst Manxmove Ltd believe that these details are correct, neither Manxmove Ltd or their clients guarantee their accuracy in any way. Consequently, these details are not to be used to form part of any legally binding contract. Prospective purchasers or tenants are advised to visit this property to satisfy themselves as to the correctness of these details. Please note, we use wide angle camera lenses in order to show as much of each room as possible. This is not intended to mislead any prospective purchasers or tenants in any way and an honest verbal description is always available prior to viewing if required.