



**52 The Grove, Sidcup, Kent, DA14 5NQ**  
**£600,000 Freehold**

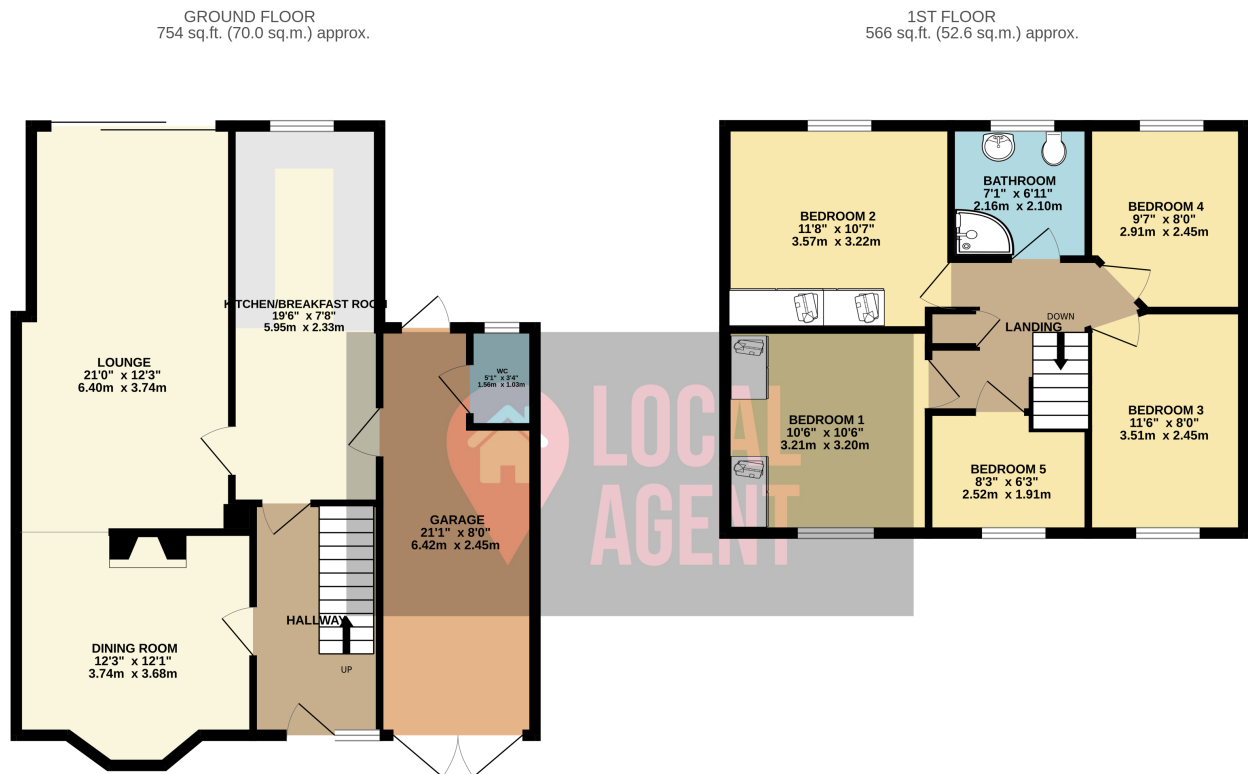
## Description

Guide Price £600,000 - £625,000

Five Bedroom extended Semi-detached House, located in the sought after road just a short walk to the popular Foots Cray Meadows.

Use our online diary to request your viewing.

Situated in a sought after location this extended five bedroom semi detached home is ideally positioned for access to with Foots Cray Meadows just a short walk away with 240 acres of woodlands and fields with the river cray flowing through. Some of the best schools in the borough are a short drive away or a walk through footscray meadows to local primary schools Royal Park and Hope School Nearest Secondary School is Cleeve Park School. Locally there is Sidcup Golf Club, the famous Danson Park with historic buildings and lake. Sidcup High Street and Bexley Village are approximately 1.3miles away with boutique shops and cafes and the prestigious Hall Place a fine Grade I listed country house built in 1537 a popular wedding and events destination. Locally there are many restaurants, retail shops and pubs, large supermarket, gyms and recreational grounds The property also benefits from Albany Park Station approximately 0.7 miles away with a parade of local amenities. The location also benefits from easy access to the A2 and A20 which make this location ideal for the London commuter.



TOTAL FLOOR AREA: 1319 sq.ft. (122.6 sq.m.) approx.

Whilst every attempt has been made to ensure the accuracy of the floorplan contained here, measurements of doors, windows, rooms and any other items are approximate and no responsibility is taken for any error, omission or mis-statement. This plan is for illustrative purposes only and should be used as such by any...