

Wallace Court, 54 Tizzard Grove, London, SE3 9EE

£1,675 PCM

ZERO AGENCY FEES* *Pay less upfront with a Zero Deposit Guarantee A stylish two double bedroom apartment offering bright and spacious living/entertaining space open plan to modern kitchen, bathroom and master en-suite shower room. The property boasts impressive courtyard views, floor to ceiling windows and a luxurious lifestyle with complimentary spa, swimming pool, fully equipped gymnasium, wifi lounge, cinema, business centre and boardroom. Includes a right to park. This property is available from the 4th July 2019.

Viewing by appointment with 1st avenue.

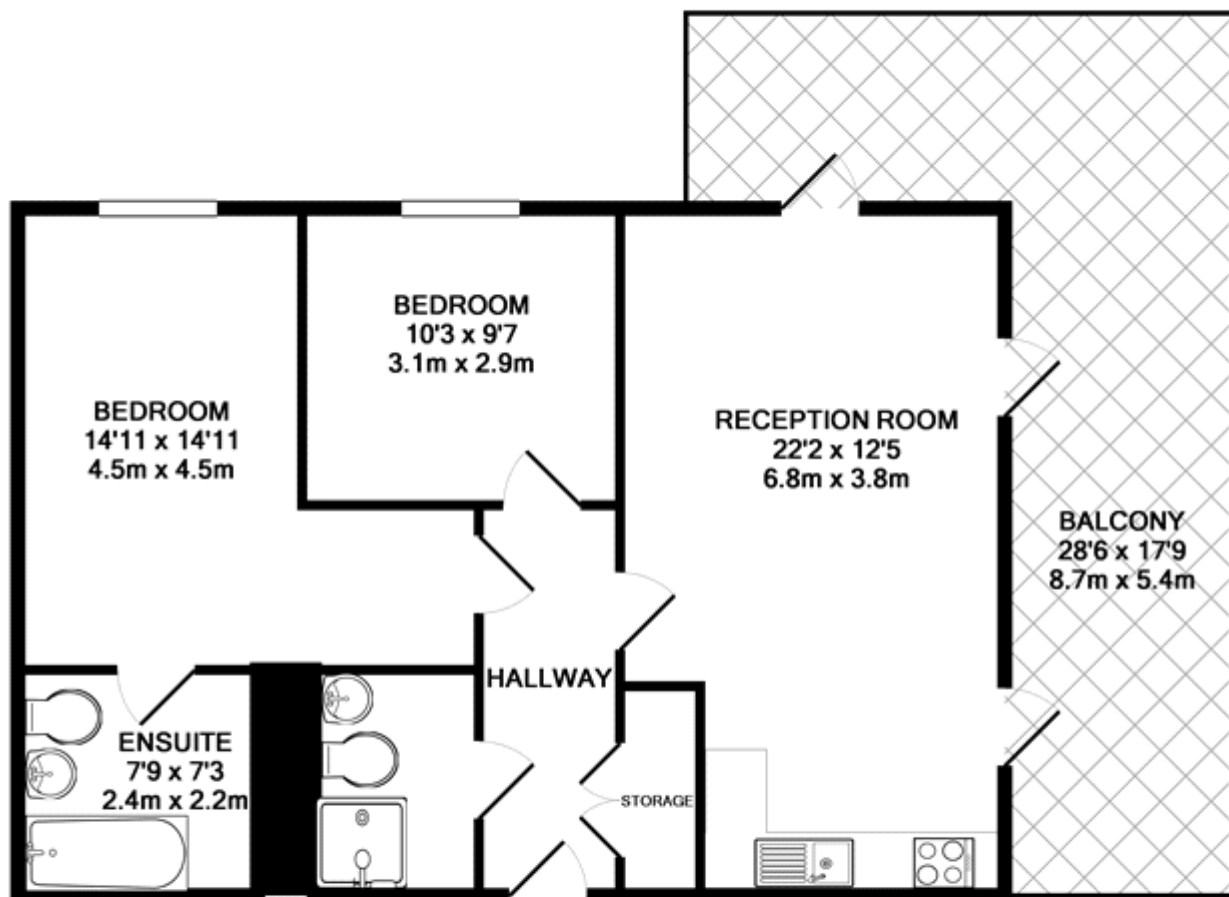
Call: 020 8293 8600

1st avenue, 128 Metcalfe Court, West Parkside, London SE10 0EL
email: info@1stavenue.co.uk

Wallace Court, 54 Tizzard Grove, London, SE3 9EE

£1,675 PCM

1stavenue
Real Estate Services



TOTAL APPROX. FLOOR AREA 694 SQ.FT. (64.5 SQ.M.)

Whilst every attempt has been made to ensure the accuracy of the floor plan contained here, measurements of doors, windows, rooms and any other items are approximate and no responsibility is taken for any error, omission, or mis-statement. This plan is for illustrative purposes only and should be used as such by any prospective purchaser. The services, systems and appliances shown have not been tested and no guarantee as to their operability or efficiency can be given
Made with Metropix ©2019

Viewing by appointment with 1st avenue.

Call: 020 8293 8600

1st avenue, 128 Metcalfe Court, West Parkside, London SE10 0EL
email: info@1stavenue.co.uk

1stavenue
Real Estate Services