

TO LET

Southerton Road,
Brackenbury Village, W6

Flat
Brackenbury Village

£2,100 pcm

2  1  1 

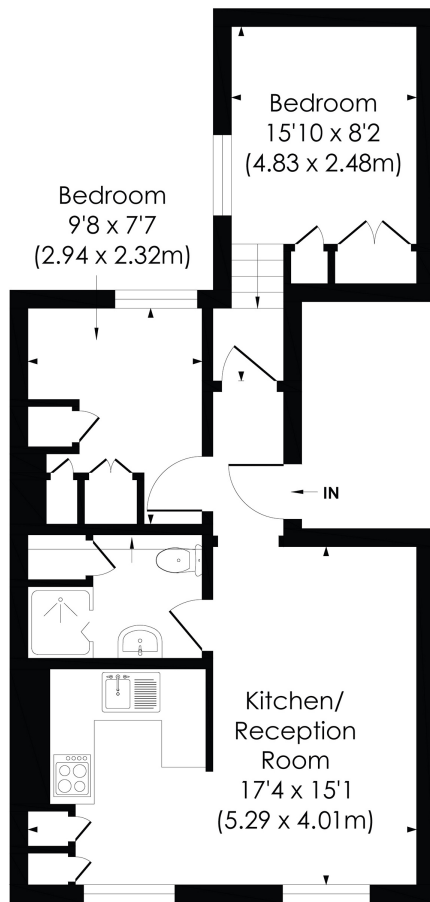


**horton
andgarton**

SALES / LETTINGS / PROPERTY MANAGEMENT

hortonandgarton.co.uk | Sales 020 8819 0510 | Lettings 020 8819 0511
172 King Street, Hammersmith, W6 0QU





FIRST FLOOR



SOUTHERTON ROAD, W6

Approx. Gross Internal Floor Area
466 Sq. ft/43.30 Sq.m

**horton
and garton**

© Pixangle Property Marketing Ltd. info @pixangle.com Tel: 0208 870 2118

This floor plan has been prepared for illustration purposes only, in accordance with the latest RICS code of measuring and is not to scale. All measurements and areas are approximate and whilst every effort has been made to ensure the accuracy of the plan contained here, no responsibility is taken for any error, omission or misstatement.



Victorian conversion flat | Two double bedrooms | Open plan living and kitchen | Fitted wardrobes | EPC rating D | Brackenbury Village



hortonandgarton.co.uk
Sales 020 8819 0510
Lettings 020 8819 0511

172 King Street, Hammersmith, W6 0QU