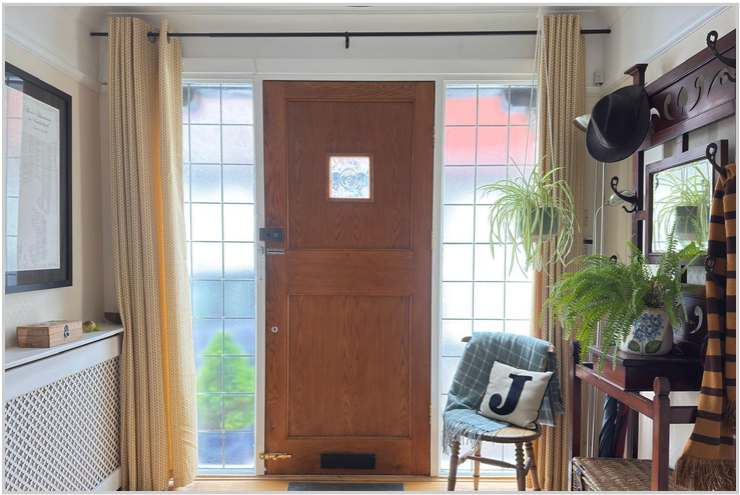


155 Chislehurst Road, Petts Wood, Orpington, Kent, BR6 0DS

## Property Images











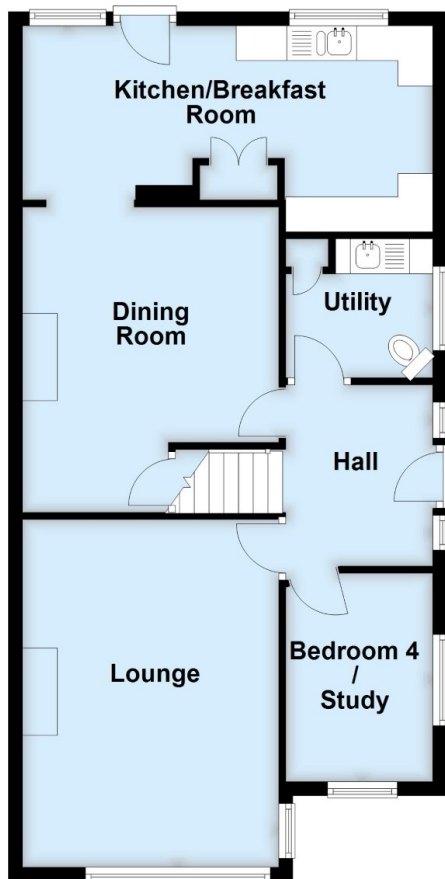






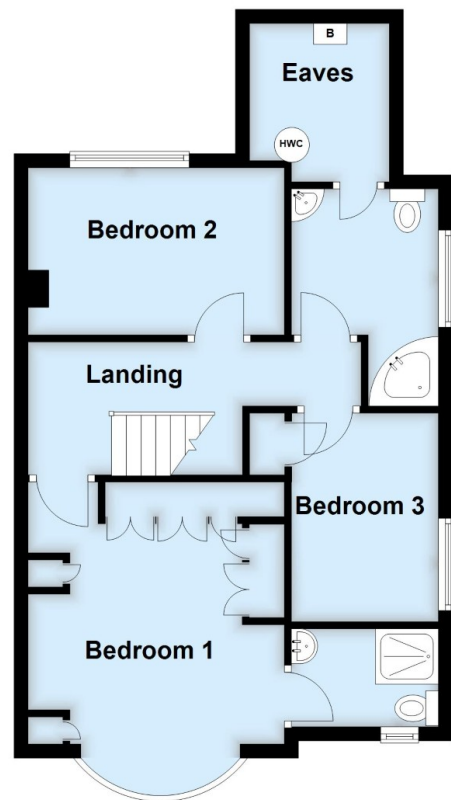
## Ground Floor

Approx. 68.2 sq. metres (733.8 sq. feet)



## First Floor

Approx. 52.3 sq. metres (563.2 sq. feet)



Total area: approx. 120.5 sq. metres (1297.0 sq. feet)

This plan is for general layout guidance and may not be to scale.  
Plan produced using PlanUp.