

Stanfords  
— sales & lettings —



**Guide Price £800,000 Freehold**  
3 bedroom terraced house

Rathfern Road  
Catford



## Read all about it...

A charming and characterful brick-fronted terraced house, boasting over 1,200 sqft of beautifully presented living space, perfect for modern family living.

Stepping inside, you'll discover a home that retains delightful period features throughout. The welcoming entrance hall leads to a double reception room adorned with bay windows, elaborate ceiling roses, cornicing, and a working wood-burning stove. This area can be separated by elegant wood-panel French doors, creating a versatile space for relaxation or entertaining. The kitchen, with underfloor heating throughout, opens up to a light-filled dining area, offering a modern space for cooking and entertaining, with natural light flooding in through dual-aspect windows. Additionally, there is a convenient downstairs WC and a good-sized cellar providing plenty of additional storage space.

The period charm and thoughtful decor continue upstairs. The light and spacious landing opens to three bedrooms, two of which are generously sized doubles, along with a modern bathroom. Access to the loft provides even more storage options and potential for future expansion (STPP).

Outside, the garden has been lovingly maintained, featuring a paved patio that opens to a lush green lawn with mature plant borders and a useful storage shed at the rear. This outdoor space is perfect for al fresco dining, gardening enthusiasts, or simply enjoying some peace and tranquility.

Nestled on a quiet residential street on the borders of Catford and Forest Hill, this property is ideal for those seeking fast transport links and a vibrant local community. The area offers a diverse selection of shops, supermarkets, and exciting places to eat and drink, as well as essential amenities such as a GP practice, dentist, and a 24-hour PureGym all within walking distance. Known for its family-friendly atmosphere, Rathfern Road is well-served by nurseries and schools, including the Ofsted 'Outstanding' rated Rathfern Primary School just a stone's throw away. Additionally, the property is surrounded by plenty of green spaces, including Blythe Hill Fields and Waterlink Way, a popular walking and cycling route.

Excellent transport links are available, with the twin Catford stations just 0.2 miles away, providing frequent bus and rail connections to Central London and beyond.

**Tenure:** Freehold | **Council Tax:** Lewisham band D

**THREE BED FAMILY HOME  
CATCHMENT AREA FOR  
'OUTSTANDING' PRIMARY  
SCHOOLS  
APPROX 1,254SQFT.**

**WEST FACING GARDEN  
0.4MI TO BLYTHE HILL FIELDS  
0.5MI TO TWIN CATFORD  
STATIONS**



**Like what you see?**

Call 020 8690 3656 or email us at [catford@stanfordstates.london](mailto:catford@stanfordstates.london) to arrange a viewing or request further information



## GROUND FLOOR

### Lounge

13' 3" x 12' 4" (4.04m x 3.76m)

Double-glazed sash bay windows, plantation shutters, pendant ceiling light, fireplace with wood burning stove, alcove cabinetry and shelving, radiator, wood flooring.

### Dining Room

12' 5" x 10' 3" (3.78m x 3.12m)

French doors to garden, pendant ceiling light, alcove cabinet and shelving, radiator, wood flooring.

### Kitchen

23' 5" x 9' 5" (7.14m x 2.87m)

Double-glazed windows and bi-folding doors, inset ceiling spotlights, handmade wooden fitted kitchen units, farmhouse style sink with boiling water mixer tap, integrated dishwasher and washing machine, range cooker, extractor hood, tile flooring, underfloor heating.

### W/C

2' 6" x 6' 6" (0.76m x 1.98m)

Ceiling light, wall-mounted washbasin, WC, tile flooring, underfloor heating.

## FIRST FLOOR

### Bedroom

16' 1" x 13' 3" (4.90m x 4.04m)

Double-glazed sash windows, plantation shutters, inset ceiling spotlights, radiators, fitted carpet.

### Bedroom

12' 5" x 10' 3" (3.78m x 3.12m)

Double-glazed sash windows, pendant ceiling light, fireplace, radiator, fitted carpet.

### Bedroom

9' 8" x 9' 5" (2.95m x 2.87m)

Double-glaze sash windows, pendant ceiling light, fireplace, radiator, fitted carpet.

### Bathroom

8' 10" x 5' 5" (2.69m x 1.65m)

Double-glazed windows, ceiling light, bathtub with shower and screen, washbasin on vanity unit, WC, heated towel rail, tile flooring.

## CELLAR

### Cellar

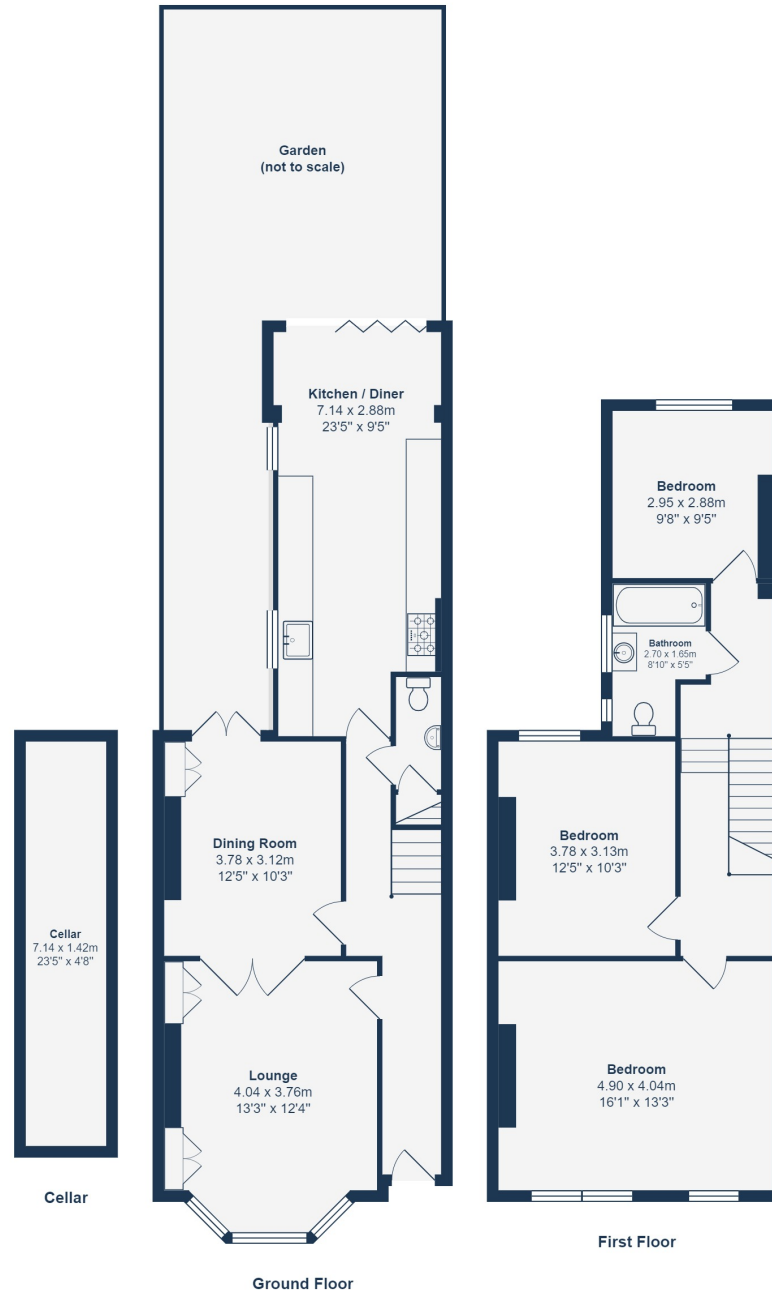
23' 5" x 4' 8" (7.14m x 1.42m)

## OUTSIDE

### Garden

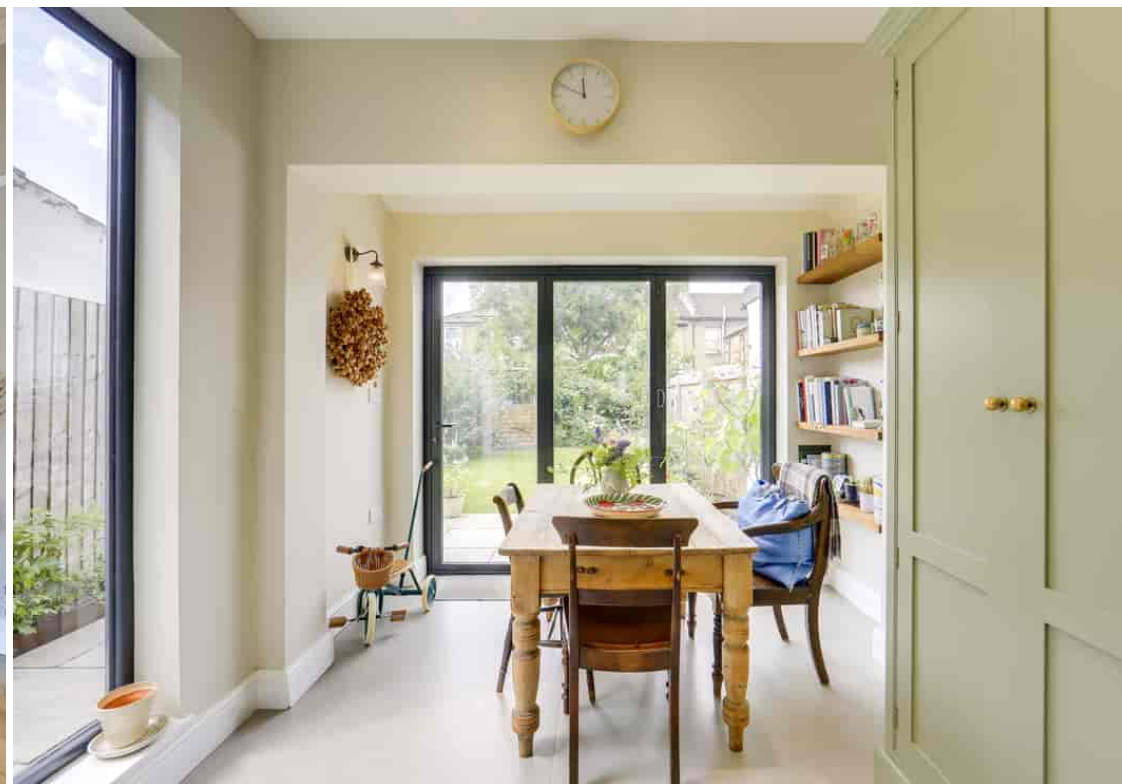
Paved patio leading to lawn with mature plant borders, log store and storage shed to rear.





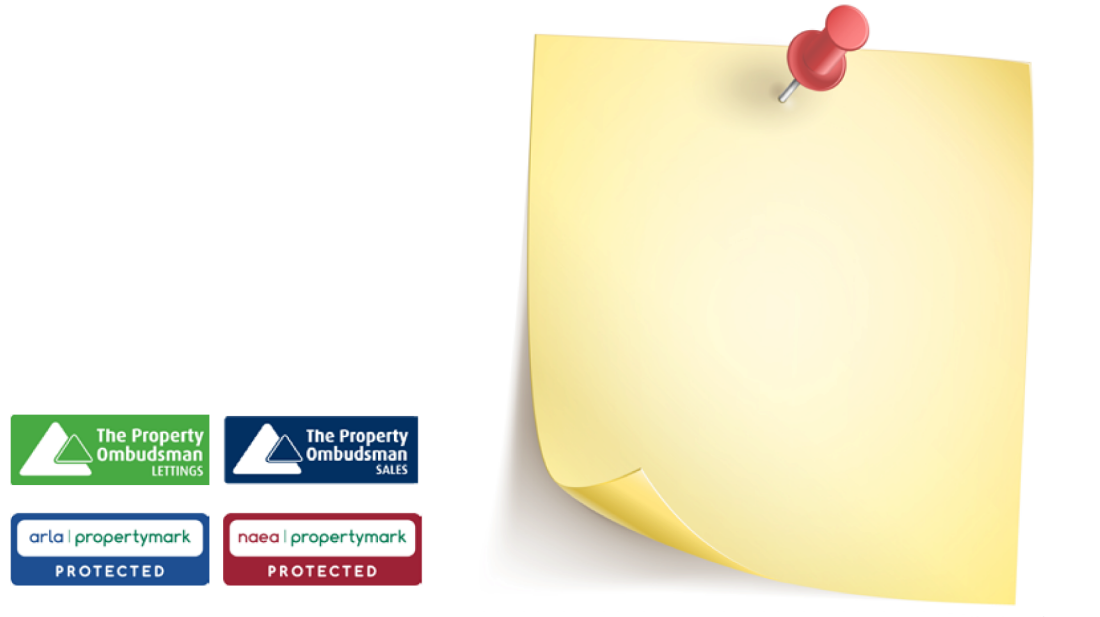
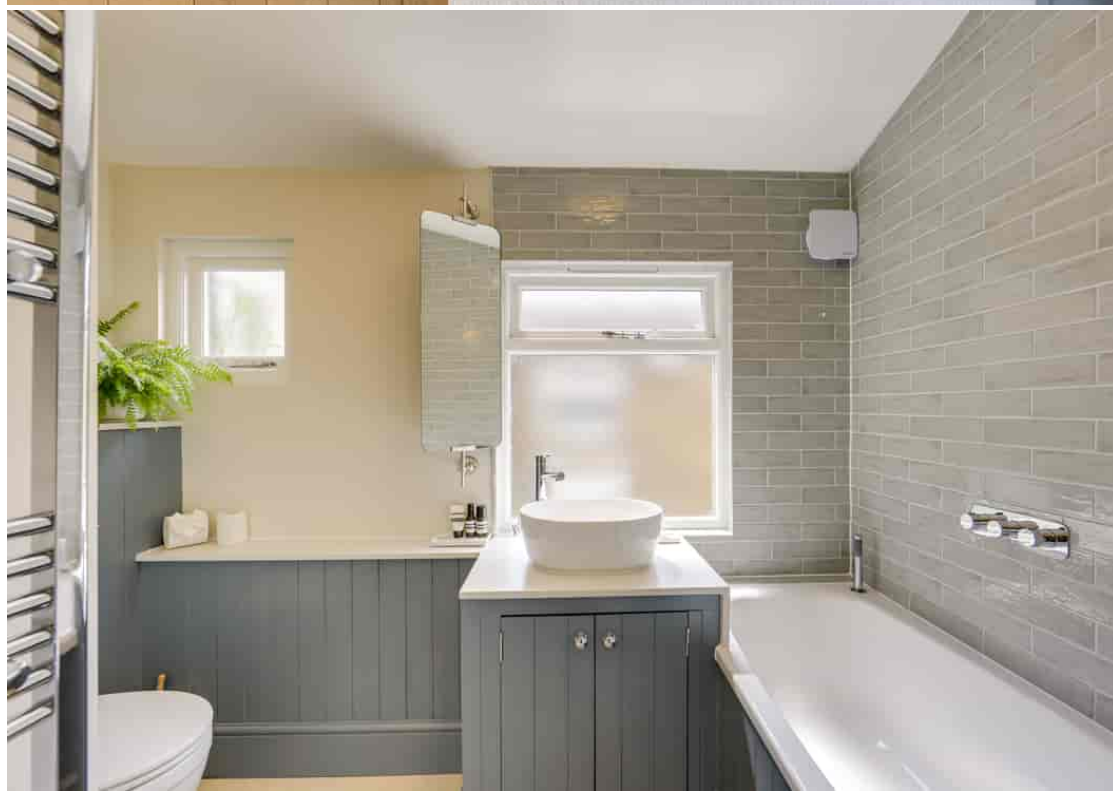
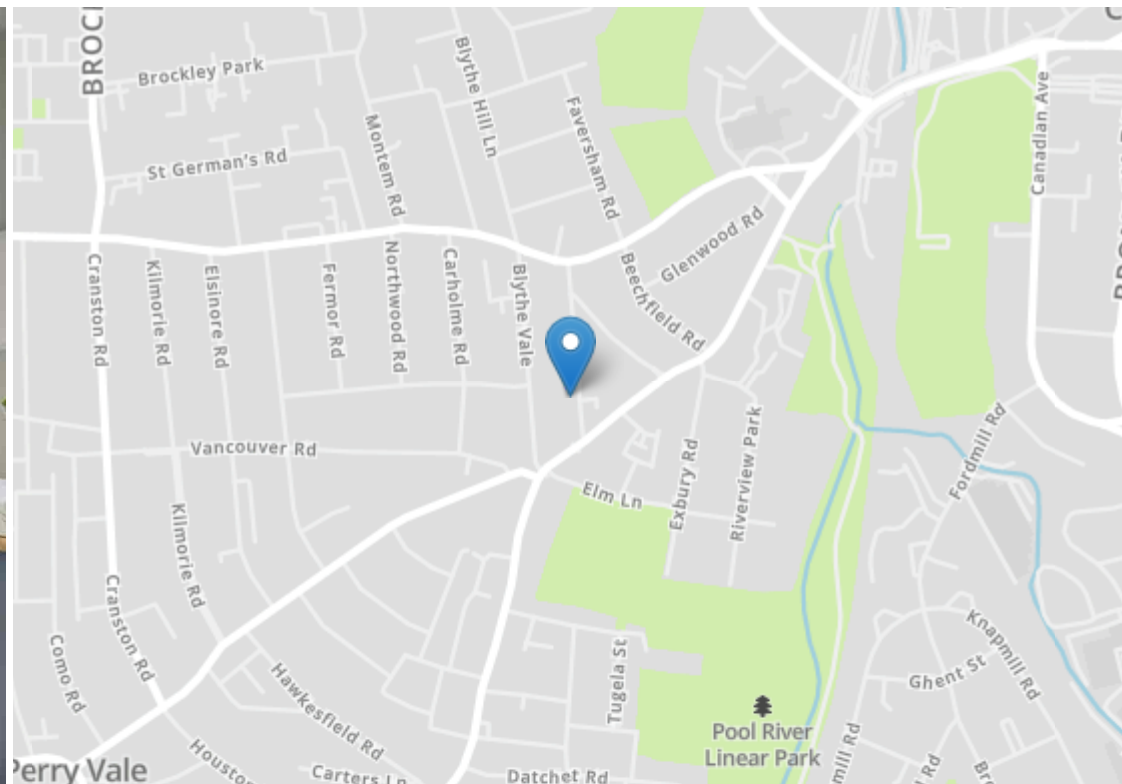
Total Area: 116.5 m<sup>2</sup> ... 1254 ft<sup>2</sup> (excluding cellar)

Drawn for Stanfords Sales & Lettings  
 This floorplan is for illustrative purposes only. Whilst every effort has been made to ensure the accuracy of the plan, the dimensions and total area are approximated only and should not be relied upon.









Robert Stanford Estates property particulars are produced in accordance with the Consumer Rights Act (2015) and should not be construed as a contract or offer. The contents of these property particulars are to provide a general illustration only and are inconsequential to any decisions to purchase a property. A potential buyer accepts that all representations made by these particulars are made in good faith on behalf of the seller and require verification by a buyers' legal and professional representatives prior to an exchange of contracts. We offer no guarantees for any structural component, service or appliance and while we make every effort to take accurate measurements and distances, they are illustrative only. Any reliance you place on information within these particulars is therefore strictly at your own risk.