





BRAND NEW, very large, three story semi-detached house in gated development.

- Brand New Executive Home
- 1,800ft<sup>2</sup> Accommodation Over Three Floors
- Lounge & Living Kitchen
- Four Bedrooms
- Three Bathrooms
- Gardens & Parking

### Description

A choice of two brand new executive homes, both with over 1,800ft<sup>2</sup> (168m<sup>2</sup>) of accommodation, which is arranged over three floors. These properties are particularly spacious and over 60% bigger than the standard town-house built by Barratt Homes and the like. There are three properties on the development, which will be gated. Located in sought after Salterswall on the edge of Winsford towards Whitegate Village. Wide entrance hall. Cloakroom. Lounge. Living kitchen and dining room. Utility room. First floor landing. Three first floor double bedrooms and two bath/shower rooms. Second floor master bedroom with dressing area and en-suite shower room. Private gardens. Double width driveway.



### Location

Salterswell is a small area towards the end of Chester Road in Winsford on the way to Whitegate Village and is synonymous with the large detached houses which adorn both sides of the road. There is a good selection of local amenities including shops and schools and the town centre has a wider range of everyday facilities. The West Coast Main Line service runs through Winsford enabling access to London within two hours. Trains to Manchester and Chester run from Cuddington, Greenbank and Northwich railway stations.

### Tenure

FREEHOLD

### EPC Rating:

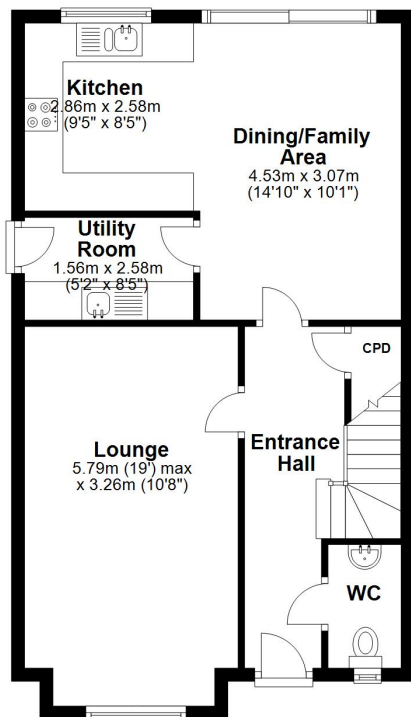
### Important Notes

Type Here



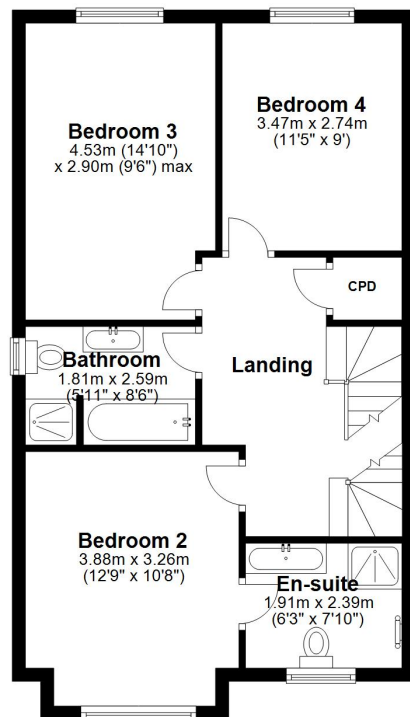
### Ground Floor

Approx. 57.9 sq. metres (623.4 sq. feet)



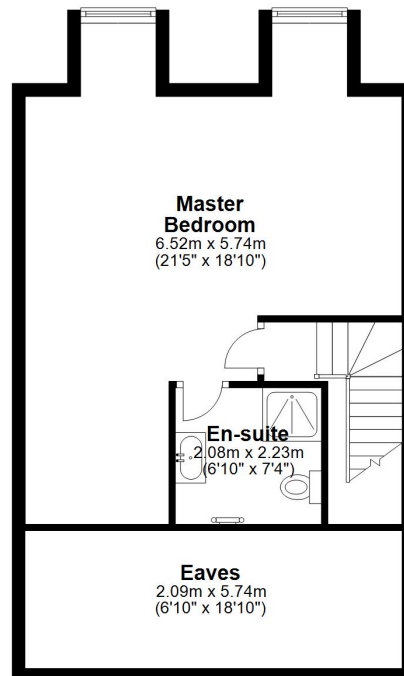
### First Floor

Approx. 57.9 sq. metres (623.3 sq. feet)



### Second Floor

Approx. 52.6 sq. metres (566.4 sq. feet)



Total area: approx. 168.5 sq. metres (1813.2 sq. feet)