

# Pampas Court

Warminster, BA12 8RS

COOPER  
AND  
TANNER



£175,000 Freehold

🛏 1 🛋 1 🚿 1 EPC D

---

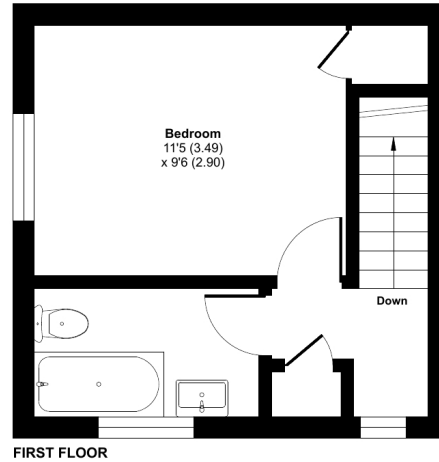
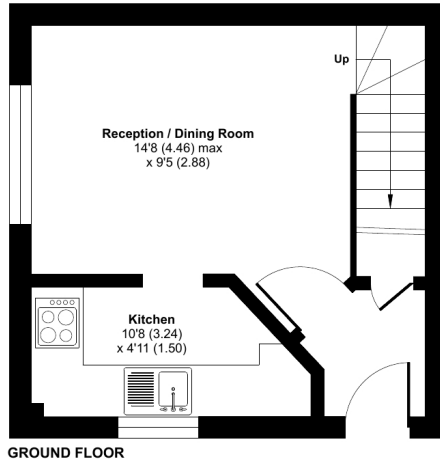
## Description

This one bedroom end terrace house has been recently updated throughout. It is an ideal property for a first time buyer. It is located on the popular Grovelands estate and is set in a small cu de sac and offers a small garden to the side and has driveway parking and also another allocated parking space. It comes to the market with NO ONWARD CHAIN, In brief the accommodation comprises: entrance hall, kitchen, lounge with stairs rising to the first floor. Upstairs there are two bedrooms with a bathroom. Outside there is a small garden to the side and a driveway with an additional parking space.



## Pampas Court, Warminster, BA12

Approximate Area = 444 sq ft / 41.2 sq m  
For identification only - Not to scale



 Floor plan produced in accordance with RICS Property Measurement 2nd Edition, incorporating International Property Measurement Standards (IPMS2 Residential). © nichecom 2025. Produced for Cooper and Tanner. REF: 1270107



### Features

- End of terrace house
- Kitchen
- Lounge
- Two bedrooms
- Bathroom
- Small garden to the side
- Driveway parking & Allocated parking
- Cul-de-sac location
- Recently decorated throughout
- No onward chain

### Local Information

- Council Tax Band B
- Tenure Freehold
- EPC Rating D

#### WARMINSTER OFFICE

Telephone 01985 215579

48-50, Market Place, Warminster, Wiltshire BA12 9AN

[warminster@cooperandtanner.co.uk](mailto:warminster@cooperandtanner.co.uk)

**COOPER  
AND  
TANNER**

Important Notice: These particulars are set out as a general outline only for the guidance of intended purchasers and do not constitute, nor constitute part of, an offer or contract. All descriptions, dimensions, reference to condition and necessary permissions for use and occupation, warranties and other details are given without responsibility and any intending purchasers should not rely on the m as statements or representations of fact but must satisfy themselves by inspection or otherwise as to the correctness of each of them.

