



Solicitors & Estate Agents

29

Mayflower Street, Townhill, Dunfermline, KY12 0HP



Working harder for you



3 bedrooms



1 public



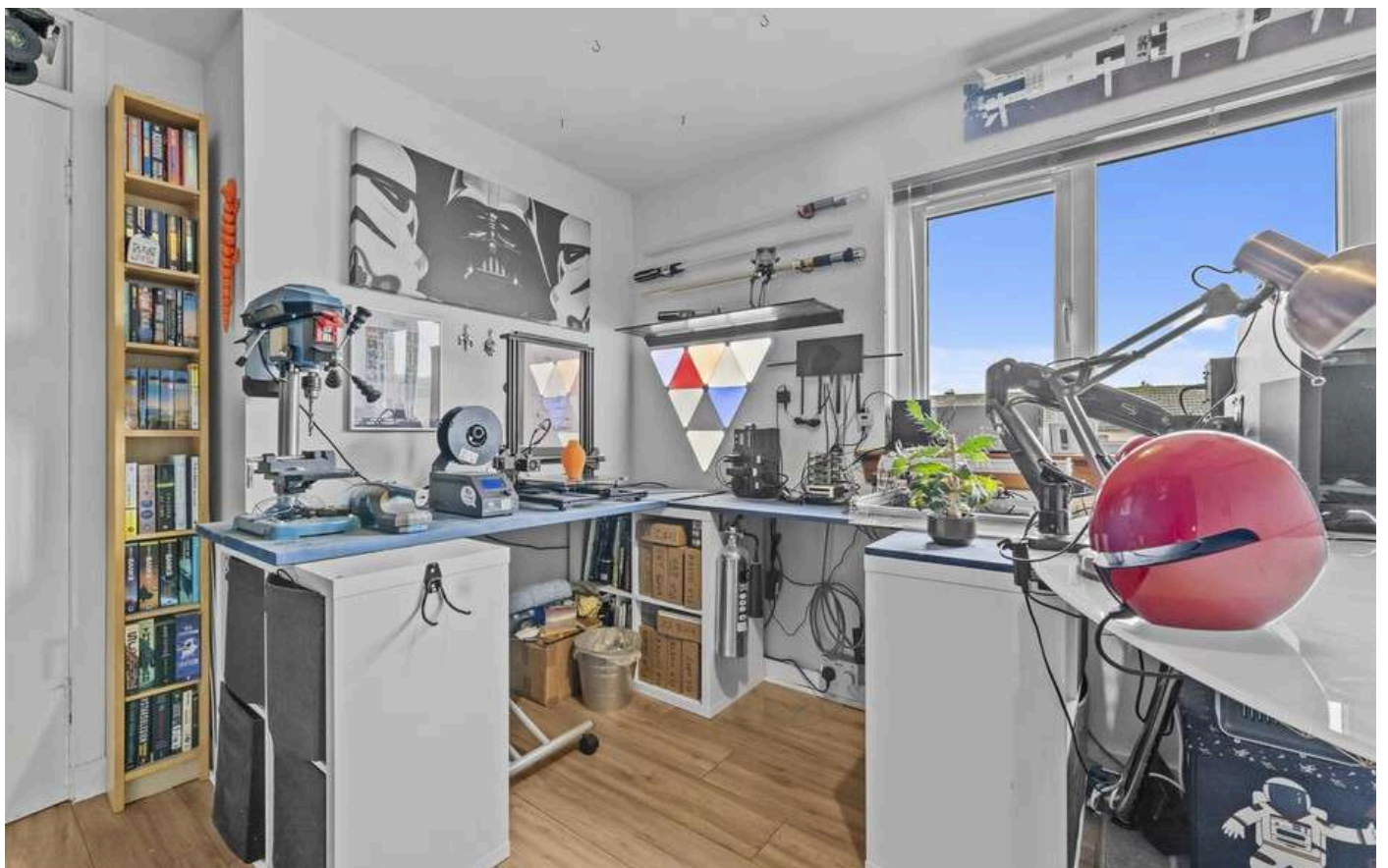
1 bathroom



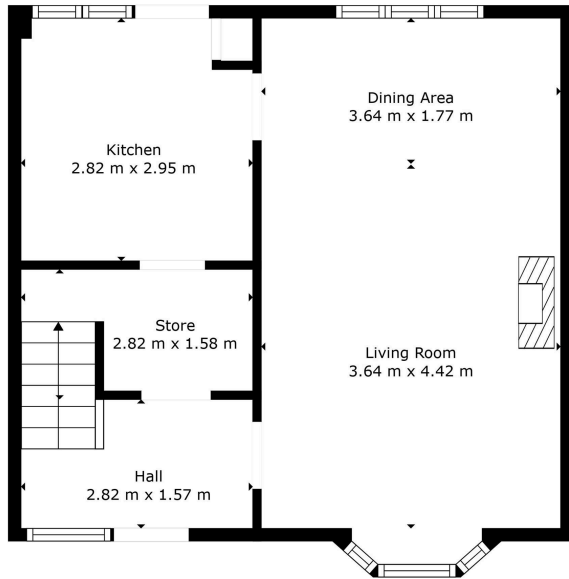
- + A spacious end terraced villa with large gardens, situated within the popular village of Townhill, circa 2 miles from Dunfermline's City Centre
- + A perfect first time home, offered to the market in good condition with large gardens to the rear
- + Local amenities within the village, including Townhill Primary School and conveniently located for amenities via Dunfermline's City Centre, offering a variety of shops, restaurants and bars. Local convenience stores available with Fife Leisure Park on the outskirts of the city offering various coffee shops, leisure facilities and a ten screen cinema
- + Easy access to the M90 motorway, Halbeath Park and Ride, Dunfermline City Railway Station and Dunfermline Queen Margaret station which is a pleasant walk down the old railway line cycle path.
- + Benefitting from a mixture of on street and off street parking
- + Entrance hall with large storage cupboard, leading to a full length lounge and dining area.
- + Modern kitchen offering base and wall units and a mixture of white goods. Access onto gardens
- + Contemporary family bathroom with three piece suite and shower over the bath
- + Two double bedrooms with built in wardrobe space within bedroom two and third single room with additional storage
- + Attic space
- + Impressive rear gardens, mostly laid to lawn and neat gardens to the front
- + An ideal first time home, set within a popular village location. Viewing comes highly recommended
- + EPC - C
- + Council Tax - B



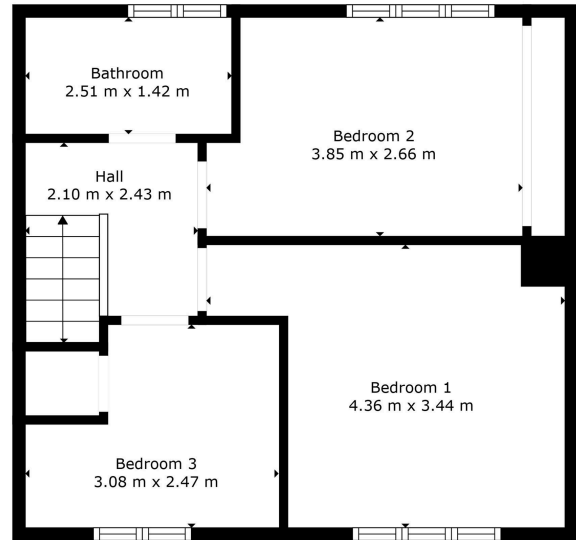








Floor 1



Floor 2



Floor Plan Created By Cubicasa App. Measurements Deemed Highly Reliable But Not Guaranteed.



Hall / Landing	2.82 m x 1.57 m / 9'3" x 5'2"	Bedroom 2	3.85 m x 2.66 m / 12'8" x 8'9"
Living Room	3.64 m x 4.42 m / 11'11" x 14'6"	Bedroom 3	3.08 m x 2.47 m / 10'1" x 8'1"
Dining Room	3.64 m x 1.77 m / 11'11" x 5'10"	Bathroom	2.51 m x 1.42 m / 8'3" x 4'8"
Kitchen	2.82 m x 2.95 m / 9'3" x 9'8"		
Bedroom 1	4.36 m x 3.44 m / 14'4" x 11'3"		



Sharing is caring!

6/8 Bonnar Street,
Dunfermline KY12 7JR

T: 01383 629720 F: 01383 621333, DX DF69



W: maloco.co.uk