



Ashwell Road, Newnham, Ashwell, Herts. SG7 5JX





## 4 Bedroom Detached House £850,000 Freehold

Coming soon a brand new 4 double bedroom detached house situated on a plot of approximately 0.25 of an acre. The property should be completed in October and is situated in a beautiful village. Newham is a small, picturesque village near Ashwell in North Hertfordshire which stands on a brook at the foothills of high chalk hills, only 1 mile east of the boundary of Bedfordshire and 2.25 miles north of Baldock Railway Station with only thirteen houses being sold in the last ten years and it is situated within the catchment area of Ashwell Primary School and Knights Templar Senior School both of which are rated as 'Good' by Ofsted. The village of Ashwell is only 2 miles from Newnham, a 3-minute car journey, a 10-minute cycle ride or a beautiful country walk in the summer. Ashwell is a large village with some lovely period homes set around the freshwater springs, with fantastic village pubs serving great food, a good variety of shops, including a coffee shop, a well-regarded butcher and baker, the only thing it lacks is the candle stick maker



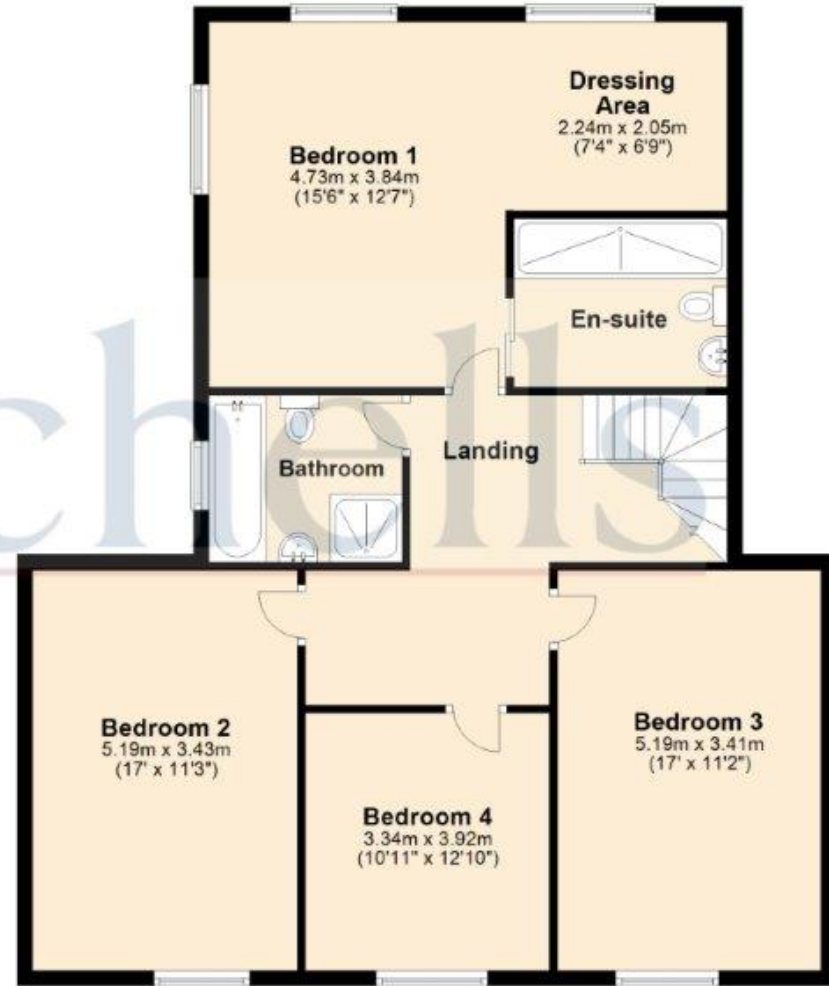
These particulars are a guide only and do not constitute an offer or a contract. The floor plan is for identification purposes only and not to scale. All measurements are approximate and should not be relied upon if ordering furniture, white goods and flooring etc. We have presented the property as we feel fairly describes it but before arranging a viewing or deciding to buy, should there be anything specific you would like to know about the property please enquire. Satchells have not tested any of the appliances or carried out any form of survey and advise you to carry out your own investigations on the state, condition, structure, services, title, tenure, and council tax band of the property. Some images may have been enhanced and the contents shown may not be included in the sale. Satchells routinely refer to 3rd party services for which we receive an income from their fee. If you would like us to refer you to one of these services please ask one of our staff who will pass your details on. We advise you check the availability of the property on the day of your viewing.



## Ground Floor



## First Floor



For illustrative purposes only - NOT TO SCALE - Measurements shown are approximate. The size and position of doors, windows, appliances and other features are approximate.  
Plan produced using PlanUp.