

# **BAKERS ROAD, CHESHUNT**

## **WALTHAM CROSS, EN7 5DY**

An opportunity to acquire this extended 4 bedroom end of terrace house benefitting from a conservatory, integral garage, cloakroom, well presented kitchen, sitting room and off street parking. Viewing highly recommended.



### **GROUND FLOOR**

**CLOAKROOM** Low flush WC, Wash hand basin.

**RECEPTION 1** 4.00m x 3.50m (13' 1" x 11' 6")

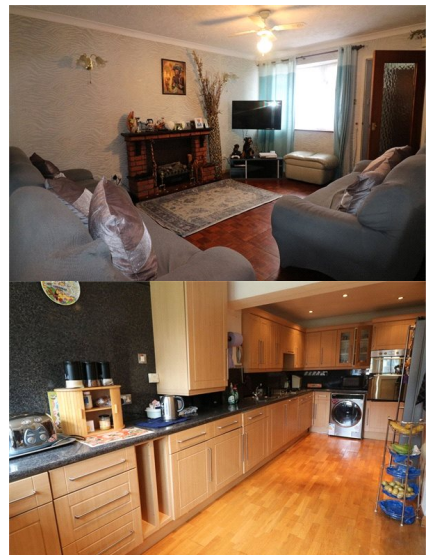
Wood laminate flooring, fireplace, coving to ceiling, double glazed window to front aspect.

**RECEPTION 2** 4.90m x 3.10m (16' 1" x 10' 2")

Wood laminate flooring, storage space, radiator, powerpoints.

**KITCHEN** 6.40m x 2.00m (21' x 6' 7")

Wood laminate flooring, range of wall and base units, integrated dish washer, spotlights.



**SITTING ROOM** 3.50m x 3.00m (11' 6" x 9' 10")

**CONSERVATORY** 4.50m x 2.40m (14' 9" x 7' 10")

Wood laminate flooring, door to garden.



## **FIRST FLOOR**

**BEDROOM 1** 3.90m x 2.80m (12' 10" x 9' 2")

Carpet, double glazed window to front aspect, spotlights, storage space.



**BEDROOM 2** 3.10m x 2.60m (10' 2" x 8' 6")

Double glazed window to front aspect, powerpoints, radiator.



**BEDROOM 3** 3.20m x 2.20m (10' 6" x 7' 3")

Wood laminate flooring, radiator, powerpoints, double glazed window to rear aspect.



**BEDROOM 4** 2.30m x 2.20m (7' 7" x 7' 3")

Fitted wardrobes, radiator, powerpoints, double glazed window to rear aspect.



**BATHROOM** Tiled flooring, square panel bath, low flush WC, pedestal wash hand basin, double glazed window to rear aspect.



**EXTERIOR**

**GARDEN** Patio & lawn area, flower borders, side access, storage shed.



**GARAGE**

**PRICE:**

**£399,999**

**FREEHOLD**