

**1 Bedroom(s), Apartment, Leasehold**

**Mallard Chase, Hatfield, Doncaster.**



- 3D Virtual Tour Available
- Open Plan Breakfast Kitchen and Lounge
- Private Parking to the Rear
- Local Amenities and Transport Links
- Popular location

- One Bedroom First Floor Apartment
- Family Bathroom
- Loft Space
- Great Opportunity for Investors and First Time Buyers

**£85,000**  
**For Sale**

*Book your viewing today* Tel: 01302 247754

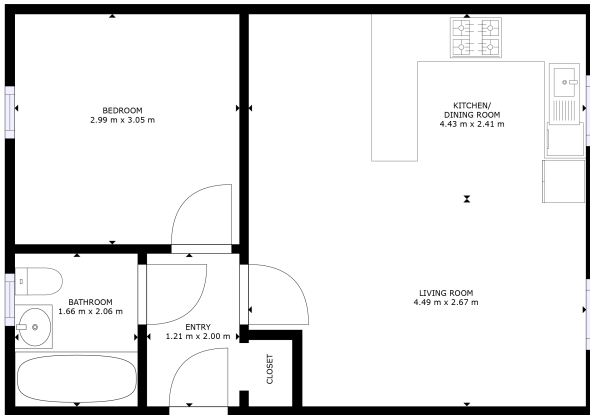


## Owner's View

Situated on the sought-after Mallard Chase development in Hatfield, Doncaster, this well-presented first floor one-bedroom flat offers a modern and convenient living space, perfect for first-time buyers, downsizers, or investors. The property features an open plan breakfast kitchen, providing a bright and sociable area for cooking, dining, and relaxing. The spacious double bedroom offers comfortable accommodation, while the family bathroom is well presented. Additional benefits include loft space for storage and a private parking area to the rear allocated for residents. Located close to local amenities, transport links, and open green spaces, this flat combines style and practicality in an excellent location.

## Internals

### Floor Plan



### Bedroom



### Open Plan Breakfast Kitchen and Lounge





## Bathroom



## Externals

### Front Aspect



### Parking



## Property Information

Council Tax Band - A

Utilities - Mains Gas, Mains Electricity, Mains Water

Water Meter -

Tenure -

Solar Panels -

Space Heating System -

Approximate Heating System Installation Date -

Water Heating System -

Approximate Water Heating Installation Date -

Boiler Location -

Approximate Electrical System Installation Date -

Permanent Loft Ladder -

Loft Insulation -

Loft Boarded out -

Whilst every effort is made to ensure that the information contained in these particulars is reliable, they do not constitute or form part of an offer or any contract. The Property Hive accept no liability for the accuracy of the contents, and therefore they should be independently verified by prospective buyers or tenants before agreeing an offer. All measurements provided are approximate and should be verified before exchange of contracts. No appliances, fixtures or fittings have been tested and should be checked by the buyer before exchange of contracts to ensure they are in good working order.

## Energy Performance Certificate

