

01992641500

www.christopherstokes.co.uk

10 Newnham Parade, College Road, Cheshunt,
Hertfordshire, EN8 9NU

christopher
stokes



Shaftesbury Avenue, Enfield, Greater London EN3

£400,000 Freehold

GUIDE PRICE £400,000 - £420,000

Presenting this three bedroom terraced family home, offered with reception room, kitchen/dining room, family bathroom and garden. The property offers the opportunity to extend and refurbish and has the option to add off street parking to the front. It is ideally located within walking distance to local shops, amenities such as the popular Durants Park, as well as several good schools, including Bishop Stopford's C of E Secondary School and Brimsdown Primary School. Shaftesbury Avenue has excellent transport links via car to A10/M25/A406, also being served by local bus services, as well as being only a short walk to Brimsdown train station with links to Cambridge/Stansted and London Liverpool Street.



christopher
stokes



christopher
stokes



christopher
stokes



christopher
stokes



christopher
stokes



christopher
stokes

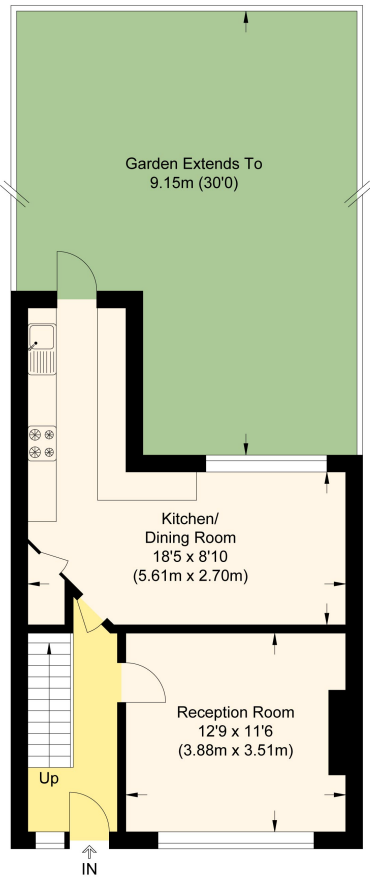


christopher
stokes

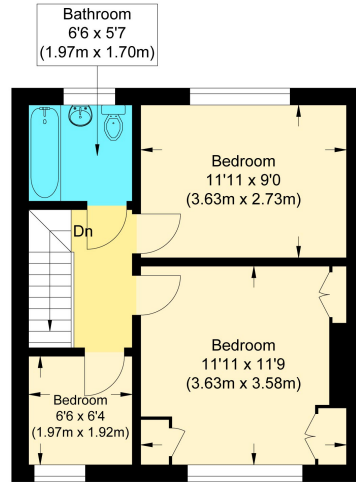
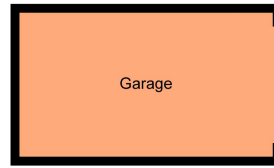


christopher
stokes

These particulars, whilst believed to be accurate are set out as a general outline only for guidance and do not constitute any part of an offer or contract. Intending purchasers should not rely on them as statements or representation of fact, but must satisfy themselves by inspection or otherwise as to their accuracy. We have not carried out a detailed survey nor tested the services, appliances and specific fittings. Room sizes should not be relied upon for carpets and furnishings. The measurements given are approximate. No person in this firm's employment has the authority to make or give any representation or warranty in respect of the property.



Ground Floor



First Floor



Shaftesbury Avenue

Approximate Gross Internal Floor Area : 76.40 sq m / 822.36 sq ft
(Excluding Garage)

Illustration for identification purposes only, measurements are approximate, not to scale.