

3 Faringdon Avenue, Bromley, Kent, BR2 8BP

Property Images

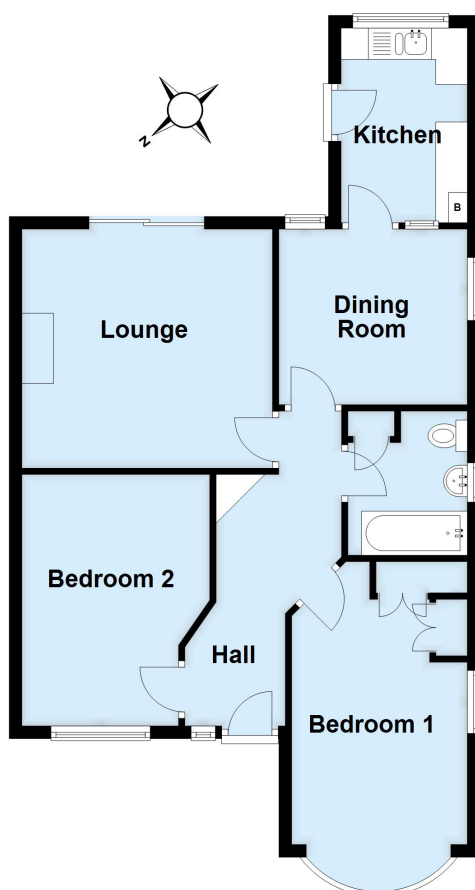






Ground Floor

Approx. 67.9 sq. metres (730.6 sq. feet)



Total area: approx. 67.9 sq. metres (730.6 sq. feet)

This plan is for general layout guidance and may not be to scale.
Plan produced using PlanUp.