



Larden Road, London, W3 7SX

**Cow & Co**  
LONDON





A well presented and neutrally decorated three bedroom family home situated in this very popular residential area within walking distance of Chiswick's main high road with its array of boutique shops and restaurants.

The house, over two floors offers three good sized bedrooms, a family bathroom and an en-suite shower room to the master bedroom.

On the ground floor there is a large reception room, a good sized kitchen with a separate dining area and further reception room opening on to a large grass lawn garden.

The house is located close to the green open spaces of Wendell Park and Ravenscourt Park which are both a convenient short walk away.

Stamford Brook tube (District Line) is an approximate ten minute walk away and Larden Road is in close proximity to numerous good schools and the shopping and transport hubs of Hammersmith and Westfield.

This property is being offered to the market chain free.

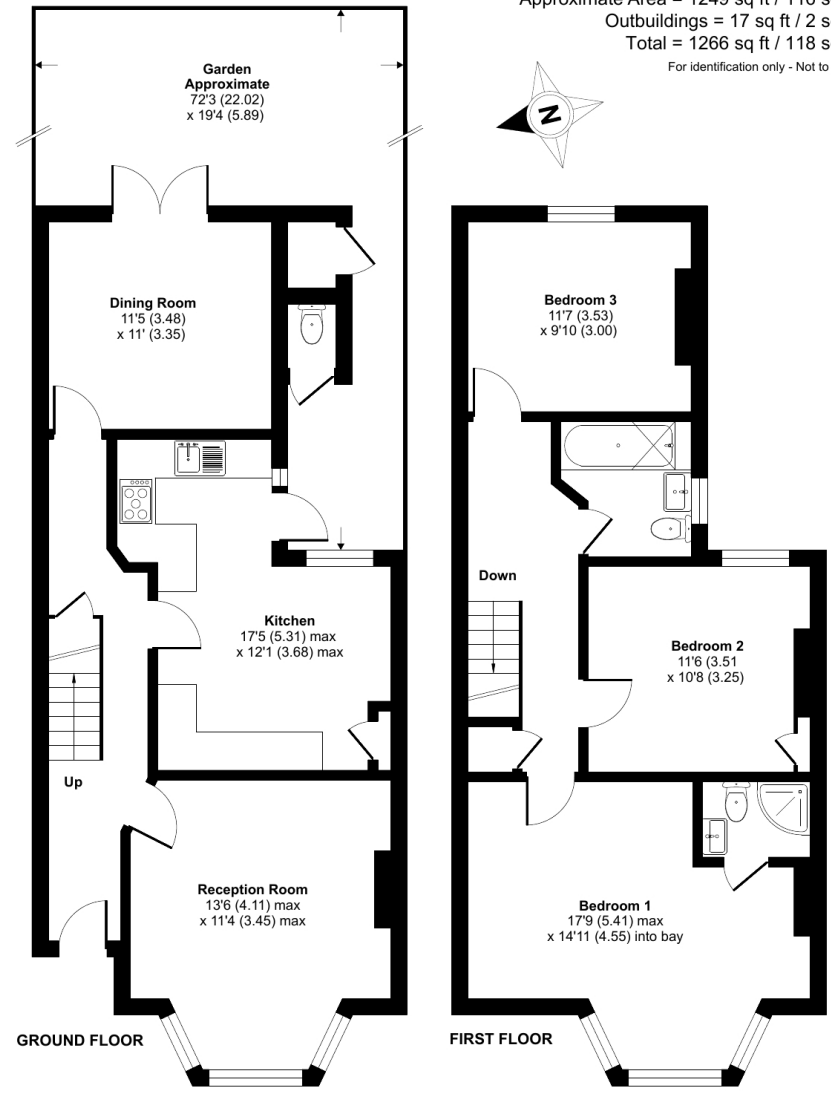




- Three bedroom family home
- Large private rear garden
- Lovely master bedroom with ensuite
- Two reception rooms
- Close proximity to local transport links and amenities
- Chain free
- Freehold house

# Larden Road, London, W3

Approximate Area = 1249 sq ft / 116 sq m  
Outbuildings = 17 sq ft / 2 sq m  
Total = 1266 sq ft / 118 sq m  
For identification only - Not to scale



Floor plan produced in accordance with RICS Property Measurement Standards incorporating International Property Measurement Standards (IPMS2 Residential). © nchecon 2022. Produced for Cow & Co Properties Ltd. REF: 850688

Tel: 0208 065 0010  
Email: thehub@cowandco-london.com  
Web: cowandco-london.com

Agents note: All measurements are approximate and whilst every attempt has been made to ensure accuracy they are for general guidance only and must not be relied on. The fixture and fittings referred to have not been tested and therefore no guarantee can be given that they are in working order. Internal photographs are reproduced for general information and it must not be inferred that any item shown is included with the property.

# Cow & Co

LONDON