



FOR SALE



Crawford Court, Charcot Road, London NW9

CHAIN FREE SALE!!!

Bright Studio Apartment in, NW9

Mischa & Co is proud to offer this beautifully maintained ground floor studio apartment located in the highly desirable Colindale area with its own private entrance. Just minutes away from Colindale Underground Station(NORTHERN LINE), this property offers excellent transport links, making it an ideal choice for both commuters and investors.

The apartment features a modern kitchen with open plan lounge, bathroom, and a bright, spacious sleeping quarter, perfect for a small family or a single professional seeking a comfortable home. Early viewings are highly recommended!

Lease 110 years. Service charge - £1180 per annum. Ground rent - £206 per annum

Energy Efficiency Rating	
Current	Potential
A	A
B	B
C	C
D	D
E	E
F	F
G	G

80 60

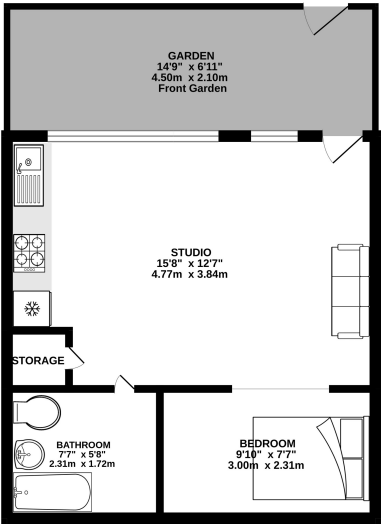
Not energy efficient - higher running costs
England, Scotland & Wales

£214,950 Leasehold

4 North Parade, Mollison Way, Edgware, HA8 5QH
E: info@mischaandco.com T: 0208 951 5000

Floorplan

GROUND FLOOR
363 sq.ft. (33.7 sq.m.) approx.



TOTAL FLOOR AREA: 363 sq.ft. (33.7 sq.m.) approx.
While every attempt has been made to ensure the accuracy of the floorplan contained herein, measurements of floor, wall, ceiling, doors and any other items are approximate and no responsibility is taken for any error, omission or mis-statement. This plan is for illustrative purposes only and should not be used as such by any prospective purchaser. The accuracy, systems and appliances shown have not been tested and no guarantee as to their condition or efficiency can be given.
Made with Metrepress 02/20

NB: Please note that all fittings, kitchen appliances and heating systems have not been tested by Mishca & Co Sales & Lettings. Whilst we endeavour to make our sales details accurate and reliable. Room sizes should not be relied upon for carpets and furnishings. If there is any point, which is of particular important to you, please contact our office and we will be pleased to verify any information for you. Do so particularly if contemplating travelling some distance to view this property.

