

An exciting lifestyle opportunity. Set in picturesque rural and private surroundings with three separate dwellings and approximately 10.55 acres. Cribyn, near Lampeter, West Wales



Cefn Bryn, Cribyn, Lampeter, Ceredigion. SA48 7QH.

£795,000

REF: A/5288/LD

*** No onward chain *** Fantastic lifestyle opportunity *** A stunning and private position with breath taking views over open countryside *** Tucked away in the rural Welsh countryside *** Three residential dwellings with traditional Welsh cottage and two semi detached substantial cottages *** Fantastic income possibilities or for multi generational living *** 3 bedroomed cottage and two 3 bedroomed semi detached cottages offering substantial and comfortable living accommodation *** In need of general modernisation and updating

*** In all set in approximately 10.55 acres split into two paddocks, being fenced and gated, having good access and offering great potential for Equestrian or general Animal keeping *** Mature and split gardens *** Separate access points for each property *** Useful range of garage, stable and general outbuildings *** Located at the end of a private lane - Right of Way

*** Convenient to the Market Towns of Lampeter and Llanybydder and the Cardigan Bay Coast at New Quay and Aberaeron *** Your very own Country Estate style living



LAMPETER
12, Harford Square, Lampeter,
Ceredigion, SA48 7DT
Tel: 01570 423623
lampeter@morgananddavies.co.uk



ABERAERON
4, Market Street, Aberaeron,
Ceredigion, SA46 0AS
Tel: 01545 571 600
aberaeron@morgananddavies.co.uk



CARMARTHEN
11, Lammas St, Carmarthen,
Carmarthenshire, SA31 3AD
Tel: 01267 493444
carmarthen@morgananddavies.co.uk

LOCATION



Cribyn is a scattered rural Community lying some 5 miles from the University Town of Lampeter and some 7 miles from the Georgian Coastal Harbour Town of Aberaeron. The property has a pleasant rural position off a quiet district road, being within easy reach of amenities with nearby Lampeter and Felinfach providing Shop, Garage, Public House, Places of Worship and Junior School.

GENERAL DESCRIPTION



A superbly positioned Country smallholding offering Country Estate style living with three separate residential dwellings.

The main property being Cefn Bryn Cottage offers character 3 bedroomed accommodation set in its own grounds of approximately half an acre with a private parking area and enjoying superb views.

The two semi detached cottages, being Cefn Bryn Isaf and Cefn Bryn Uchaf, offers improvable 3 bedroomed semi detached cottages, again with their own gardens and parking areas.

As a whole it is set within approximately 10.55 acres of good pasture, having good access, being fenced and gated, offering potential for Equestrian purposes or for general Animal keeping.

The property enjoys a superb rural setting yet not being remote and enjoys easy convenience to the Towns of Lampeter and Llanybydder and the Cardigan Bay Coast at New Quay and Aberaeron.

The property is worthy of early viewing and could offer itself nicely for a business opportunity or as a Family home or for multi generational living. The possibilities here at Cefn Bryn are endless.

THE ACCOMMODATION

The accommodation at present offers more particularly the following.

CEFN BRYN COTTAGE



The property itself is a detached 3 bedroomed cottage style property being beautifully presented and enjoying a fantastic period character yet with modern living accommodation. The accommodation is split over two floors with two large living areas, modern kitchen and downstairs shower room. Upstairs enjoys 3 bedrooms and a bathroom. As a whole it enjoys a large plot of around half an acre with lawned areas to the rear, ample parking to the front and also an annexe style building which could offer the perfect office/study. More particularly the accommodation offers the following:-

CEFN BRYN COTTAGE (SECOND IMAGE)



SIDE PORCH

With a half glazed side entrance door, flag stone flooring.

KITCHEN

16'5" x 15'3", with a Dark Oak fitted Kitchen with a range of wall and floor units with Granite work surfaces and breakfast bar, stainless steel double drainer sink unit, plumbing and space for dishwasher, electric double oven, 5 ring gas hob, Oak flooring.



SITTING ROOM

21'42 x 14'1", with a large cast iron multi fuel stove, Oak flooring, two radiators, original staircase to the first floor accommodation with understairs storage cupboard.



INNER HALL

Leading to

DOWNSTAIRS SHOWER ROOM

13' x 5'8", having a modern suite with a low level flush w.c., pedestal wash hand basin, radiator, walk-in shower cubicle, airing cupboard with hot water cylinder and immersion.



LIVING ROOM

31' x 16'2", with a feature bar area, Bespoke fitted cabinets and book shelves, patio doors opening into the rear garden area.



FRONT ENTRANCE PORCH

With quarry tiled flooring, front entrance door.

FIRST FLOOR

LANDING

Leading to

BEDROOM 2

15'7" x 14', with built-in wardrobes, radiator.



LAUNDRY ROOM

With plumbing and space for automatic washing machine and tumble dryer.

BEDROOM 3

15'3" x 11'7", with feature crossed beam ceiling, double aspect windows.



BATHROOM

8'5" x 5'8", having a panelled bath, vanity unit with wash hand basin, low level flush w.c., Velux roof window.



BEDROOM 1 (PRINCIPAL)

13' x 12'9", with wall to wall built-in wardrobes, Velux roof window.



EXTERNALLY

ANNEXE

Located within the front courtyard area. Comprising of:-

ROOM 1

14'3" x 11'6", being 'L' shaped, with radiator, large cloak cupboard.

ROOM 2

15'8" x 5'7", with plumbing in-situ for a shower room. This room would perfectly suit a home office or study area.

GROUND

The property sits within its own grounds of approximately half an acre, being well kept level lawns, with mature hedge boundary and backing onto open country fields.



PARKING AND DRIVEWAY

A large walled tarmacadamed driveway lies to the front with ample parking and turning space.

CEFN BRYN UCHAF

A traditional semi detached cottage in pleasant rural surroundings enjoying a courtyard position. Comprising of:-



CEFN BRYN UCHAF - LIVING ROOM

14'6" x 18', with a large cast iron multi fuel stove running all domestic systems within the property, original staircase to the first floor accommodation, radiator, fitted book shelves.



CEFN BRYN UCHAF - KITCHEN

15'7" x 13'3", a fitted Kitchen with a range of wall and floor units, stainless steel sink and double drainer unit, dual fuel cooker stove, part beamed ceiling.



CEFN BRYN UCHAF - CONSERVATORY/WORKSHOP

18' x 13'4", with patio doors opening onto the front garden area.

CEFN BRYN UCHAF - REAR HALL

With plumbing and space for automatic washing machine.

CEFN BRYN UCHAF - BATHROOM

Having a panelled bath, low level flush w.c., pedestal wash hand basin, radiator.

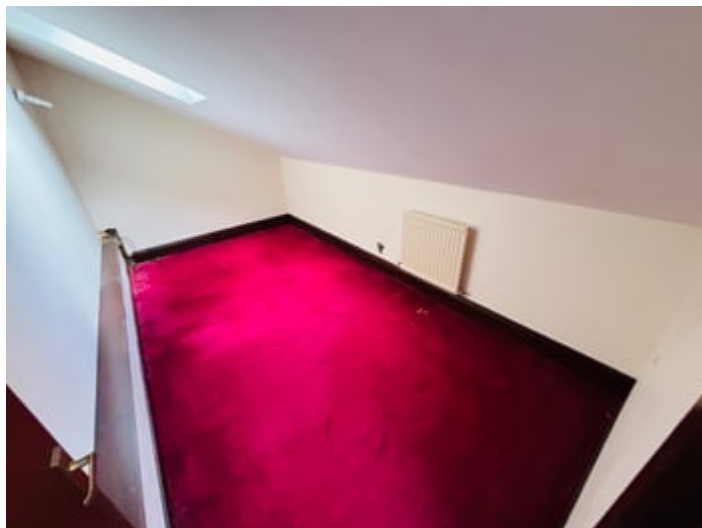
CEFN BRYN UCHAF - DOUBLE BEDROOM

11'1" x 7'7", with radiator.

CEFN BRYN UCHAF - FIRST FLOOR

CEFN BRYN UCHAF - BEDROOM/STUDY

14'3" x 7'8", with radiator.



CEFN BRYN UCHAF - BEDROOM 2

14'4" x 17'3", with built-in cupboard space, airing cupboard with hot water cylinder and immersion, radiator.



CEFN BRYN UCHAF - SHOWER ROOM

With shower cubicle, pedestal wash hand basin, bidet, low level flush w.c., extractor fan.

CEFN BRYN UCHAF - BEDROOM 1 (PRINCIPAL)

17'2" x 14'7", with double aspect windows, feature beamed ceiling, two radiators.



EXTERNALLY - CEFN BRYN UCHAF

WORKSHOP/GARAGE

23'2" x 12'7", with concrete flooring, electricity and water connected.



LEAN-TO STORE

CEFN BRYN UCHAF - GARDEN

A mature well stocked garden lies to the front of the property having a delightful veranda with ample outdoor seating area.

CEFN BRYN UCHAF - PARKING AND DRIVEWAY

The property enjoys its own driveway that leads down to a good sized parking area.

CEFN BRYN ISAF

Comprising of:-



CEFN BRYN ISAF - ENTRANCE PORCH

7'9" x 4'6", with tiled flooring, front entrance door.

CEFN BRYN ISAF - KITCHEN

15'1" x 12'7", with a modern range of wall and floor units, cooker point and space, tiled flooring, stainless steel sink and double drainer, two radiators, steps leading up to Living Room.

CEFN BRYN ISAF - LIVING ROOM

16'2" x 12', with a raised stone hearth with a cast iron multi fuel stove that runs all domestic systems within the property, Oak flooring, TV. Point, original staircase to the first floor accommodation.

CEFN BRYN ISAF - INNER HALL

Leading to

CEFN BRYN ISAF - SHOWER ROOM

Having low level flush w.c., shower cubicle with Triton electric shower.



CEFN BRYN ISAF - UTILITY ROOM/OFFICE

11'3" x 7'7", with radiator.

CEFN BRYN ISAF - FIRST FLOOR

CEFN BRYN ISAF - LANDING

Leading to

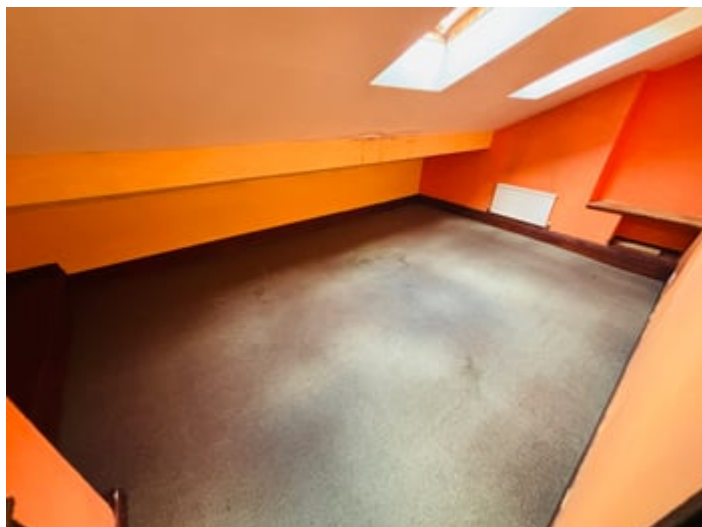
CEFN BRYN ISAF - BEDROOM 2

13'7" x 11'9", with radiator, airing cupboard with hot water cylinder and immersion.



CEFN BRYN ISAF - BEDROOM 3

17'9" x 9'5", with two Velux roof windows, radiator.



CEFN BRYN ISAF - BATHROOM

Having panelled bath, low level flush w.c., pedestal wash hand basin, Velux roof window, radiator.



CEFN BRYN ISAF - PRINCIPAL BEDROOM 1

17'3" x 14'7", being 'L' shaped, radiator.



CEFN BRYN ISAF - BALCONY AREA

Enjoying fantastic views over the surrounding countryside.



EXTERNALLY - CEFN BRYN ISAF

WOOD STORE

12' x 12'.

STORE SHED

12' x 12'.

CEFN BRYN ISAF - GARDEN

A fantastic split level lawned garden area being well presented and maintained by the current Tenants with a fantastic range of flower and shrub borders and an orchard to the rear.



CEFN BRYN ISAF - GARDEN (SECOND IMAGE)



CEFN BRYN ISAF - PARKING AND DRIVEWAY

This property also enjoys its own driveway leading down to the side of the property with ample parking and turning space.

VIEW



AGENT'S COMMENTS

An excited and unrivalled opportunity. A small County Estate offering three living units and 10 acres.

ACCESS AND DRIVEWAY

Rights of way access via private lane, owned by neighbouring property.

PLEASE NOTE

We have been informed there is Japanese Knotweed at the property and the Vendor is currently in discussion with a specialist to have a treatment plan in place.

LAND

In total the property extends to approximately 10.55 acres split between two paddocks and the homestead. The paddocks enjoy good track access, both are fenced and gated and offer ample natural mature shelter. Providing the perfect Equestrian holding or for general Animal keeping.



LAND (SECOND IMAGE)



AERIAL VIEW OF PROPERTY



TENURE AND POSSESSION

We are informed the property is of Freehold Tenure and will be vacant on completion.

COUNCIL TAX

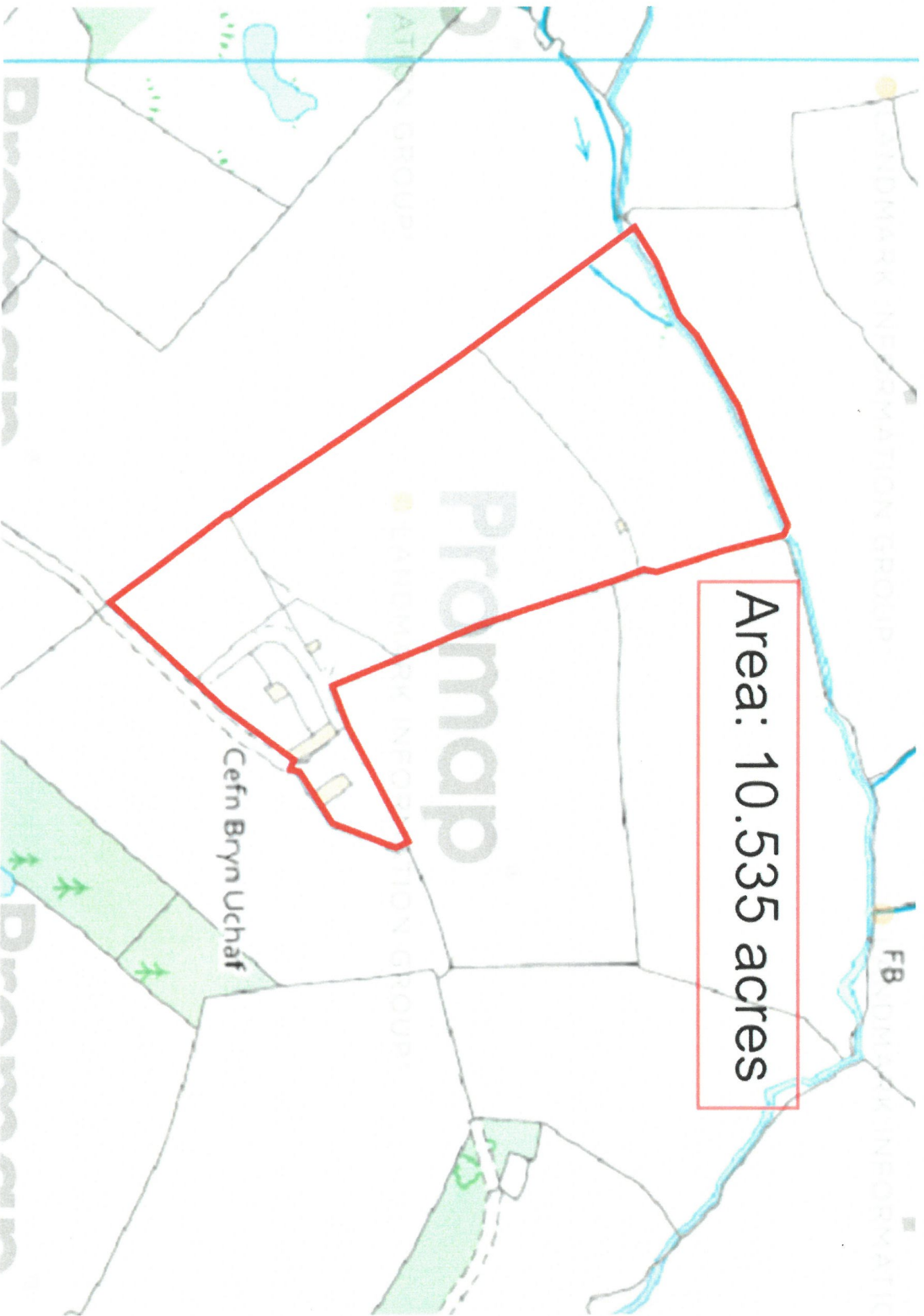
The property is listed under the Local Authority of Ceredigion County Council. Council Tax Band for the property - 'D'.

MONEY LAUNDERING REGULATIONS

The successful Purchaser will be required to produce adequate identification to prove their identity within the terms of the Money Laundering Regulations. Appropriate examples include Passport/Photo Driving Licence and a recent Utility Bill. Proof of funds will also be required or mortgage in principle papers if a mortgage is required.

Services

We are informed by the current Vendors that the property benefits from mains water, mains electricity, private drainage, LPG fired central heating, double glazing, telephone subject to B.T. transfer regulations, Broadband subject to confirmation by your Provider.



Parking Types: None.

Heating Sources: None.

Electricity Supply: None.

Water Supply: None.

Sewerage: None.

Broadband Connection Types: None.

Accessibility Types: None.

EPC Rating: E (41)

Has the property been flooded in last 5 years? No

Flooding Sources:

Any flood defences at the property? No

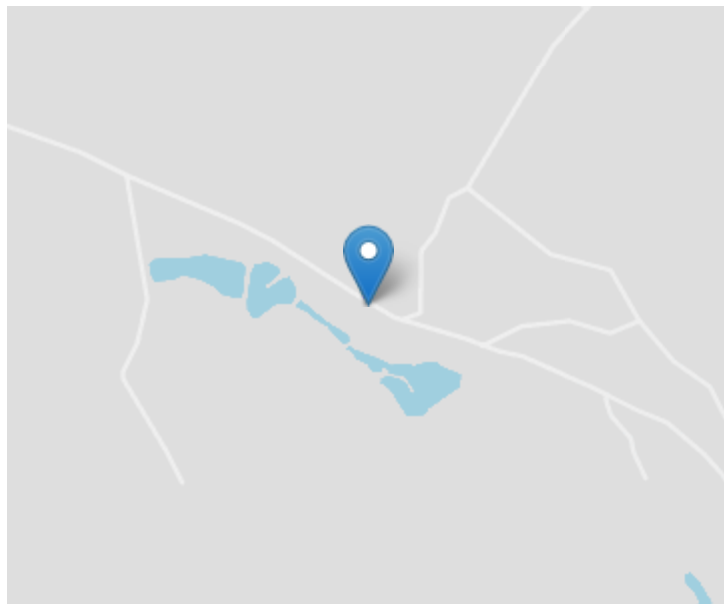
Any risk of coastal erosion? No

Is the property listed? No

Are there any restrictions associated with the property? No

Any easements, servitudes, or wayleaves?
No

The existence of any public or private right of way? No



Directions


From Lampeter take the A482 Aberaeron road as far as the Village of Temple Bar. Turn left at the crossroads onto the B4337 Cribyn roadway. As you enter the Village of Cribyn turn right by the Village Monument and follow this road bearing right towards Dihewyd. After 2 miles turn right beside a property called "Pandy" and the entrance to Cefn Bryn will be located thereafter on a private drive on your left hand side, as identified by the Agents 'For Sale' board.

VIEWING: Strictly by prior appointment only. Please contact our Lampeter Office on 01570 423 623 or lampeter@morgananddavies.co.uk

All properties are available to view on our Website – www.morgananddavies.co.uk. Also on our FACEBOOK Page - www.facebook.com/morgananddavies. Please 'LIKE' our FACEBOOK Page for new listings, updates, property news and 'Chat to Us'.

To keep up to date please visit our Website, Facebook and Instagram Pages

Energy Efficiency Rating

	Current	Potential
Very energy efficient - lower running costs		
(92+) A		
(81-91) B		
(69-80) C		79
(55-68) D		
(39-54) E	41	
(21-38) F		
(1-20) G		
Not energy efficient - higher running costs		
England, Scotland & Wales		EU Directive 2002/91/EC 

For further information or to arrange a viewing on this property please contact :

Lampeter Office
12 Harford Square
Lampeter
Ceredigion
SA48 7DT

T: 01570 423623

E: lampeter@morgananddavies.co.uk

<http://www.morgananddavies.co.uk>



Regulated by

RICS