

1 Pilot Walk, , London, SE10 0UN

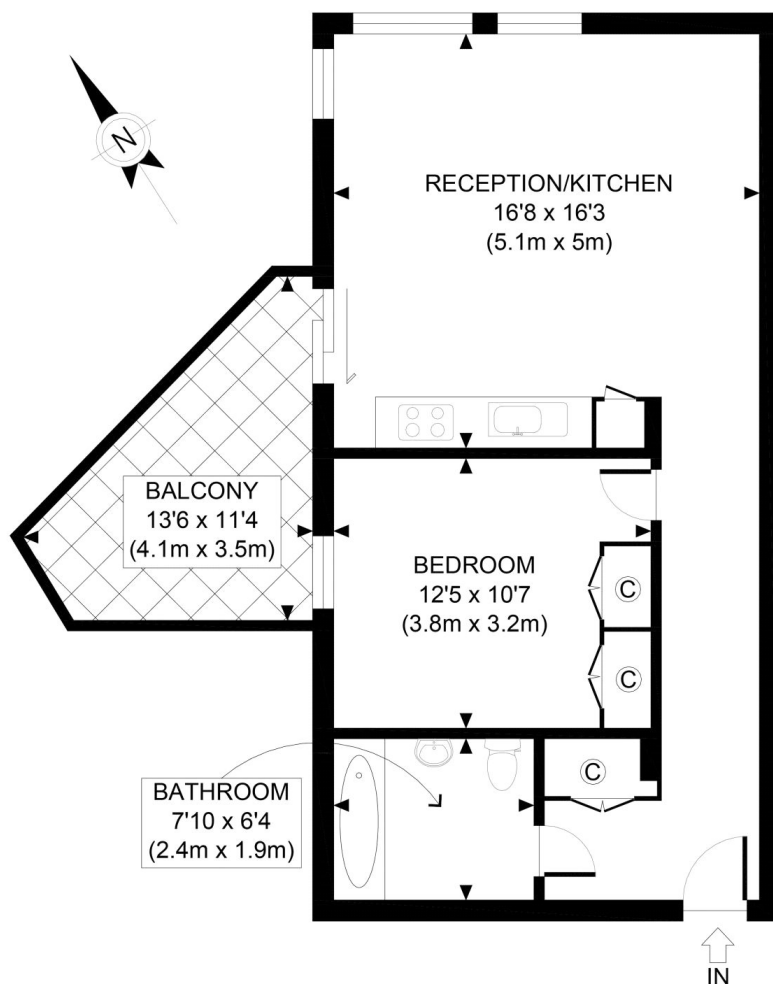
£1,675 PCM

This one bedroom apartment is located within the highly sought after Lighterman Building. It's one of eight buildings that makes up the Lower Riverside district along the Greenwich Peninsula. Comprising a sleek gloss kitchen with superb quality integrated appliances, luxury tiled and oak flooring and spacious balcony. Every aspect of this interior has been carefully selected to create stylish, elegant spaces inspired by modern living. Further benefits include concierge, access to private cinema in the Waterman Building and gymnasium in the Appeture Building. This property is offered unfurnished and available NOW! Call 1st Avenue now to organise your viewing.

Viewing by appointment with 1st avenue.

Call: 020 8293 8600

1st avenue, 128 Metcalfe Court, West Parkside, London SE10 0EL
email: info@1stavenue.co.uk



FOURTH FLOOR
GROSS INTERNAL
FLOOR AREA 567 SQ FT

APPROX. GROSS INTERNAL FLOOR AREA 567 SQ FT / 53 SQM

Ref:

Copyright **photoplan** 

Disclaimer: Floor plan measurements are approximate and are for illustrative purposes only. While we do not doubt the floor plan accuracy and completeness, you or your advisors should conduct a careful, independent investigation of the property in respect of monetary valuation

Viewing by appointment with 1st avenue.

Call: 020 8293 8600

1st avenue, 128 Metcalfe Court, West Parkside, London SE10 0EL
email: info@1stavenue.co.uk