

Residential Land

£350,000 Freehold

Land for sale with planning permission to build a large detached house approximately 1750 Square Feet Nett Internal. The land is approximately a quarter of an acre and enjoys a lovely, peaceful and tranquil setting with open countryside views to the front and rear. The land has the benefit of an existing 10 m by 6 m barn that could be used perhaps, subject to planning as a home office, garage, workshop, annexe or perhaps let as an Airbnb as you are close to a wedding venue.

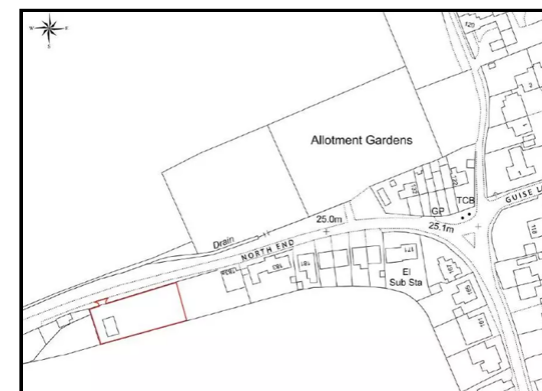


- Land for sale with planning permission
- Nett internal 1750 Square Feet
- Peaceful and quiet setting
- Rural views
- Royston and Meldreth train stations, 3 miles away
- Good road and rail links

Description:

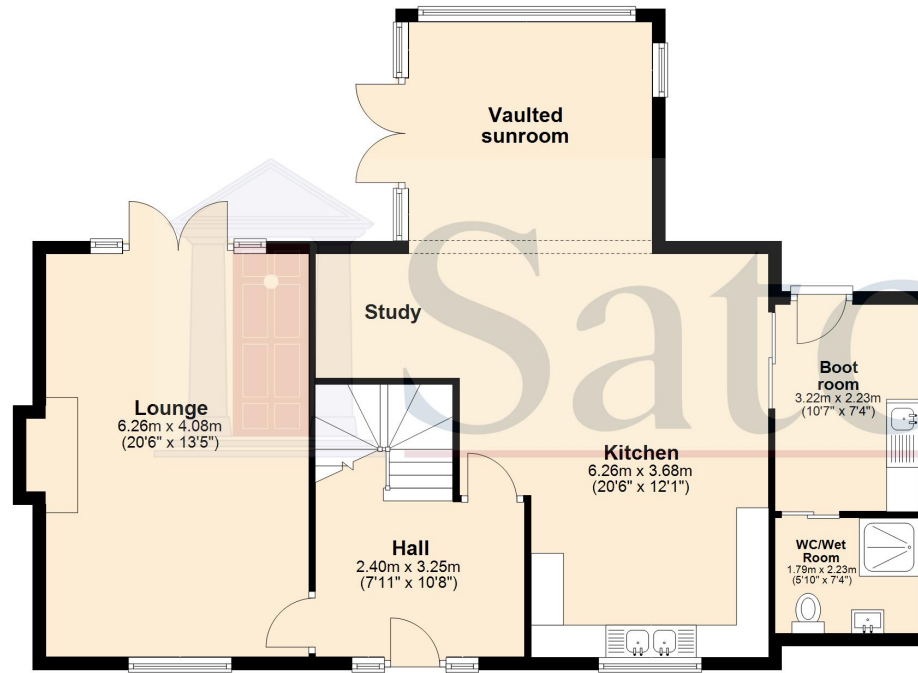
Land for sale with planning permission to build a large detached house approximately 1750 Square Feet Nett Internal. The land is approximately a quarter of an acre and enjoys a lovely, peaceful and tranquil setting with open countryside views to the front and rear. The land has the benefit of an existing 10 m by 6 m barn that could be used perhaps, subject to planning as a home office, garage, workshop, annexe or perhaps let as an an Airbnb as you are close to a wedding venue.

This family home at 1750 Square Feet is larger than most new builds you would find on modern developments. On the first floor we have 3 double bedrooms and two bathrooms, the master bedroom is dual aspect with lovely views over the fields and enjoys an en-suite and walk-in wardrobe. The ground floor is a delight and has a lovely layout with a beautiful dual aspect lounge with feature fireplace. There is also a study, boot room and a WC/wet room, ideal for those who have dogs. However, the best feature is the vast open plan 6.2 m by 5 m open plan kitchen family room that connects to the vaulted 3.8 m by 3.6 triple aspect sun room, again enjoying fantastic rural views.

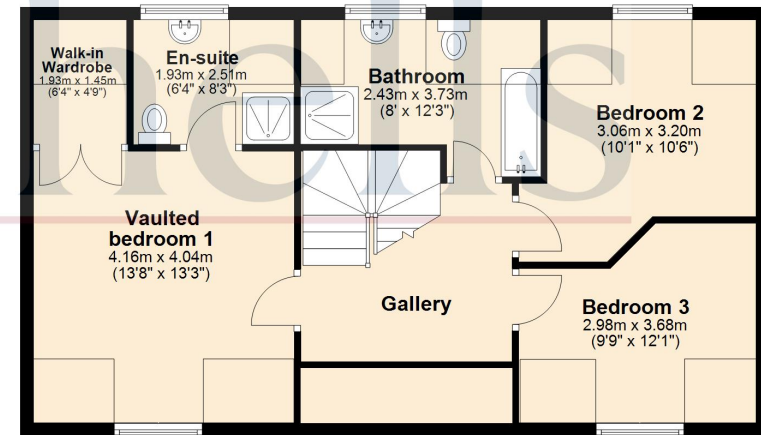


These particulars are a guide only and do not constitute an offer or a contract. The floor plan is for identification purposes only and not to scale. All measurements are approximate and should not be relied upon if ordering furniture, white goods and flooring etc. We have presented the property as we feel fairly describes it but before arranging a viewing or deciding to buy, should there be anything specific you would like to know about the property please enquire. Satchells have not tested any of the appliances or carried out any form of survey and advise you to carry out your own investigations on the state, condition, structure, services, title, tenure, and council tax band of the property. Some images may have been enhanced and the contents shown may not be included in the sale. Satchells routinely refer to 3rd party services for which we receive an income from their fee. If you would like us to refer you to one of these services please ask one of our staff who will pass your details on. We advise you check the availability of the property on the day of your viewing.

Ground Floor



First Floor



For illustration purposes only - NOT TO SCALE - Measurements shown are approximate. The size and position of doors, windows, appliances and other features are approximate.
Plan produced using PlanUp.