



Greencroft Gardens, South Hampstead, NW6

£479,950



Greencroft Gardens, South Hampstead, NW6

A character filled and well proportioned one bedroom apartment situated on the ground floor of a gorgeous period building. This flat would be an ideal first time purchase.

Offering 538 Sq Ft (50 Sq M) of internal space, this flat boasts a charming reception room with high ceilings and a fireplace and a spacious bedroom with en-suite as well as ample storage. Further key features include wooden flooring throughout and a separate WC.

Greencroft Gardens is perfectly positioned just 0.4 miles from Finchley Road Underground (Metropolitan Line & Jubilee Line) and 0.6 miles from West Hampstead Underground (Jubilee Line), Overground and Thameslink.

Features

- One Bedroom
- Character Filled Apartment
- Perfectly Located
- Positioned In A Gorgeous Period Building
- 538 Sq FT Of Internal Space
- Wooden Flooring Throughout
- Bedroom With En-suite
- Separate WC
- Ideal First Time Purchase

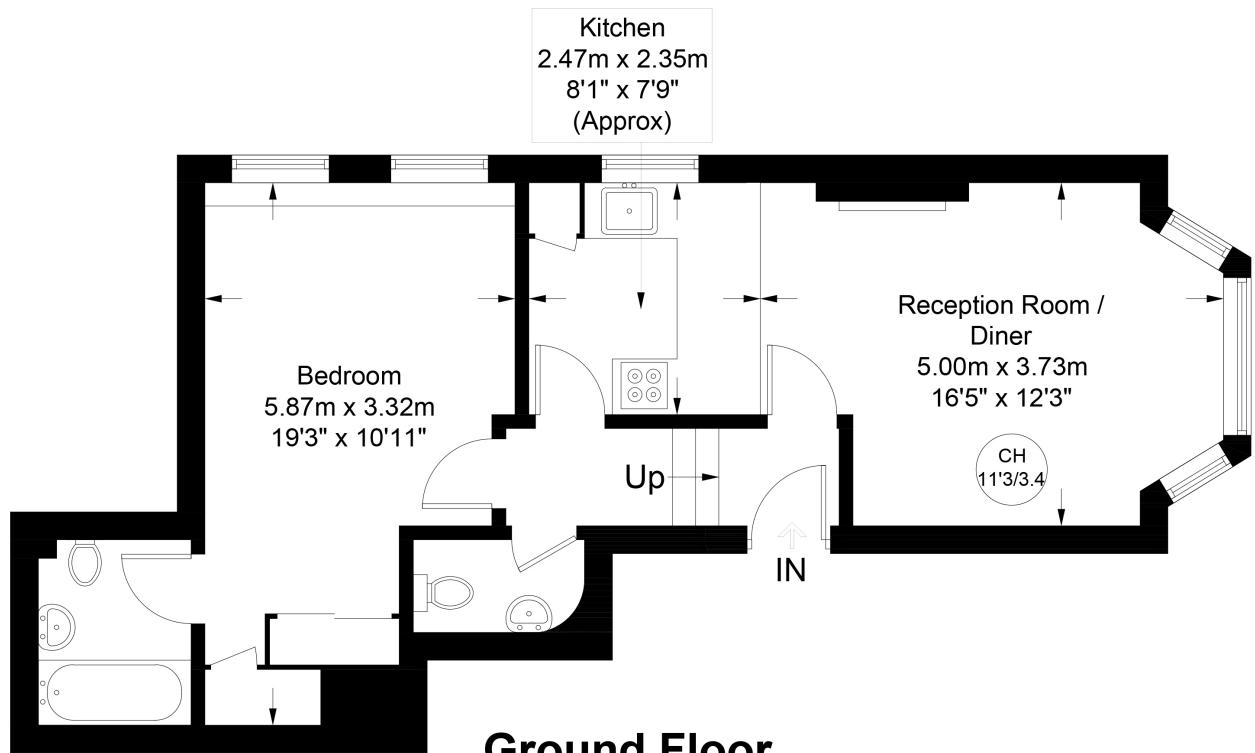


Greencroft Gardens,
South Hampstead,
NW6



Greencroft Gardens

Approximate Gross Internal Area = 538 sq ft / 50 sq m



Ground Floor

This plan is for layout guidance only. Not drawn to scale unless stated. Windows and door openings are approximate. Whilst every care is taken in the preparation of this plan, please check all dimensions, shapes and compass bearings before making any decisions reliant upon them. (ID 581627)