

GROUND FLOOR
GROSS INTERNAL
FLOOR AREA 469 SQ FT
(EXCLUDING GARDEN)

FIRST FLOOR
GROSS INTERNAL
FLOOR AREA 432 SQ FT
(EXCLUDING BALCONY)

APPROX. GROSS INTERNAL FLOOR AREA
901 SQ FT / 83.7 SQ M



Belhouse Avenue, Aveley

£425,000

- THREE BEDROOM SEMI DETACHED HOUSE
- MODERN, CONTEMPORARY INTERIOR DESIGN
- IMMACULATELY PRESENTED
- 17' RECEPTION ROOM & 18' KITCHEN / DINER
- GROUND FLOOR WC
- FIRST FLOOR FAMILY BATHROOM
- BALCONY & ENSUITE TO BEDROOM ONE
- LANDSCAPED 48' (MAX) REAR GARDEN
- ALLOCATED PARKING





GROUND FLOOR

Front Entrance

Via hardwood door opening into:

Entrance Hall

Built in storage cupboard, radiator, laminate flooring, stairs to first floor.

Reception Room

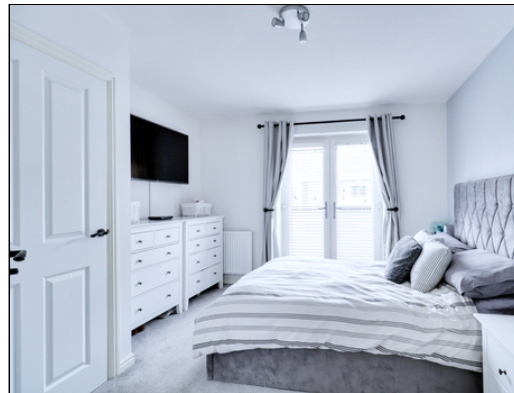
5.27m x 3.87m (17' 3" x 12' 8") (Max) Double glazed windows to front, two radiators, built-in storage cupboard, uPVC framed double glazed double doors to rear opening to rear garden, laminate flooring.

Kitchen / Diner

5.62m x 2.69m (18' 5" x 8' 10") Inset spotlights to ceiling, double glazed windows to front, a range of wall and base units, laminate work surfaces, one and a half bowl inset sink and drainer with mixer tap, integrated double oven, four ring gas hob, extractor hood, space and plumbing for washing machine, integrated fridge, integrated freezer, integrated dishwasher, laminate splash backs, laminate flooring, radiator, uPVC framed double glazed double doors to rear opening to rear garden.

Ground Floor WC

1.82m x 1.43m (6' 0" x 4' 8") Obscure double glazed window to front, low level flush WC, hand wash basin set on drawer units, chrome hand towel radiator, tiled flooring.



FIRST FLOOR

Landing

Loft hatch to ceiling, radiator, fitted carpet.

Bedroom One

3.48m (Max) x 3.38m (11' 5" x 11' 1") uPVC framed double glazed double doors to front opening to balcony, radiator, fitted carpet.

Ensuite Shower Room

2.74m x 1.18m (9' 0" x 3' 10") Obscure double glazed window to rear, low level flush WC, hand wash basin with tiled splash back, shower cubicle, radiator, tiled flooring.

Bedroom Two

3.18m x 3.02m (10' 5" x 9' 11") Double glazed windows to front, radiator, built-in storage cupboard, fitted carpet.

Bedroom Three

3.15m (Max) x 2.2m (10' 4" x 7' 3") Double glazed windows to rear, radiator, fitted carpet.

Bathroom

2.18m x 1.91m (7' 2" x 6' 3") Obscure double glazed window to front, panelled bath, low-level flush WC, hand wash basin with tiled splash back, chrome hand towel radiator, tiled flooring.



EXTERIOR

Rear Garden

Approximately 48' (max) Part paved and partly laid to artificial grass, raised bush and plant border, timber shed to rear, access to front via timber gate.

Front Garden

Laid to decorative pebbles with bush borders, paved pathway to front, one allocated parking space located to the right hand side of the property (looking at front of property).

