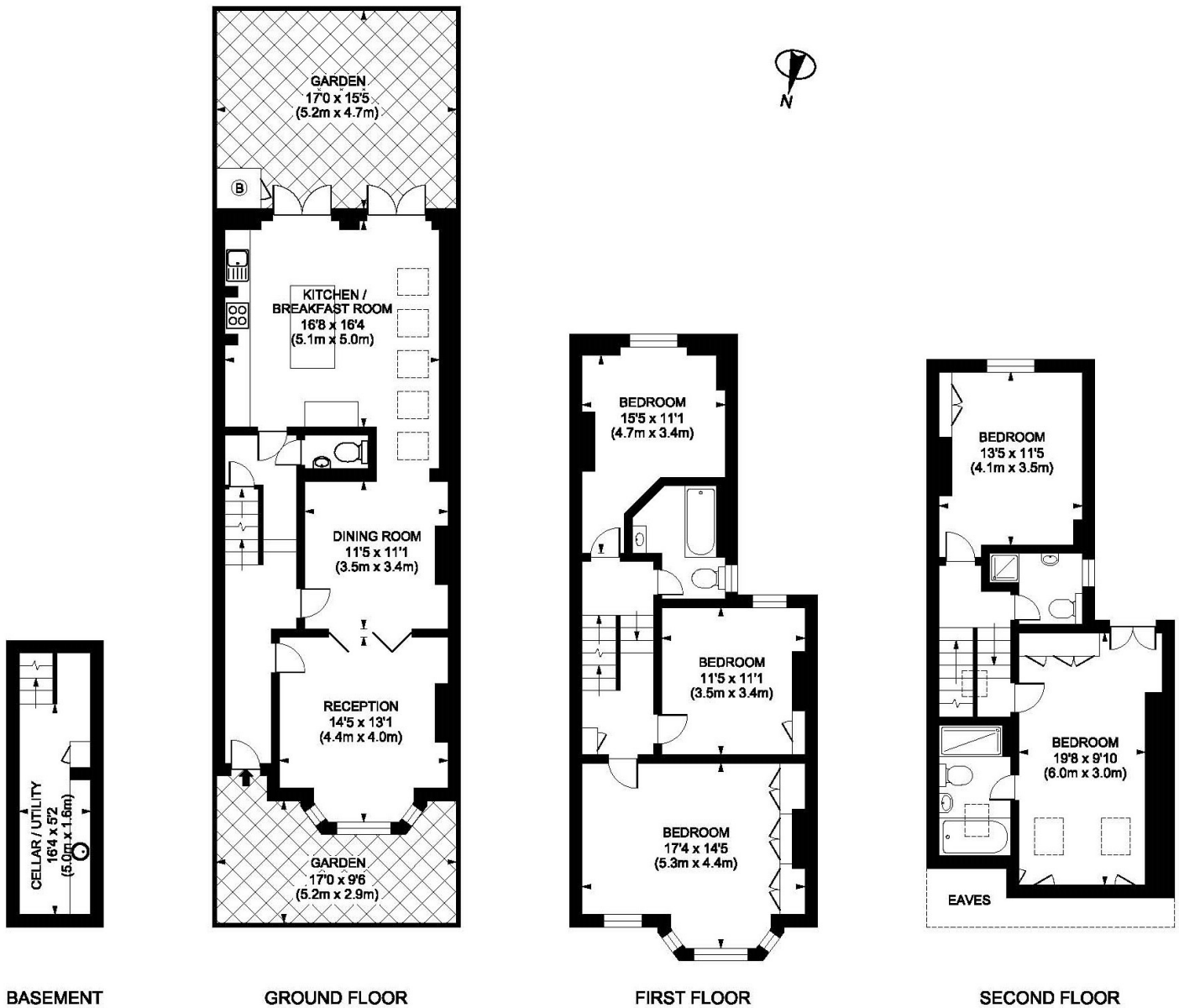




Broomwood Road
Between The Commons
SW11

TO LET

This five bedroom, three bathroom, Victorian terraced house with large extended kitchen and sunny south-facing garden is in excellent decorative condition. Located very close to Clapham South tube and just yards from Clapham Common, it is also well placed for excellent schools and fashionable Northcote Road.

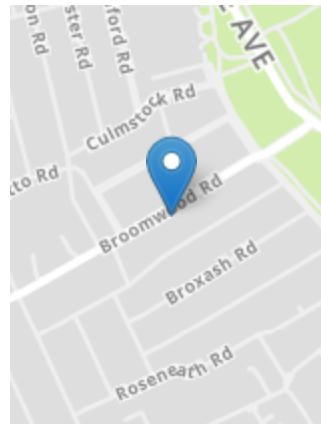


Broomwood Road, SW11
 Gross Internal Area 2077 sq ft/193 sq metres
 ©photosandfloorplans.com



PROPERTY FEATURES

- Cellar Utility Room
- South-Facing Garden
- Top Floor Master Suite
- Extended Kitchen/Dining Room
- 3 Bath / Showers (Total)
- Double Reception Room
- Five Double Bedrooms (Total)
- 2077 Sq Ft / 193 Sq M



VIEWING BY APPOINTMENT ONLY

The particulars do not constitute part of an offer or contract: the particulars including text descriptions, photographs and plans are only for the guidance of prospective purchasers and must not be relied on as statements of fact: nothing in the particulars shall be deemed as a statement that the property is in good condition nor that any services or facilities are in good working order: measurements given are approximate: prior to viewing we recommend that you discuss particular points of interest with a staff member to avoid a wasted journey