

## **Flat 3, 19 The Bayle**

Folkestone  
CT20 1SQ

**£300,000** FREEHOLD

FOR SALE WITH BURNAP + ABEL... Burnap + Abel are delighted to offer this two bedroom newly built apartment, situated in the sought after location of The Bayle, Folkestone. The property has been finished to a very high standard and the accommodation comprises open plan lounge/kitchen, family bathroom and two bedrooms. Additional benefits include a private balcony, share of freehold, long lease and no onward chain. For your chance to view call sole agent Burnap + Abel now on 01303 258590.





### Entrance Hall

### Lounge/Kitchen

14' 7" x 12' 9" (4.45m x 3.89m)

### Bathroom

9' 3" x 5' 0" (2.82m x 1.52m)

### Bedroom One

14' 8" x 9' 2" (4.47m x 2.79m)

### Bedroom Two

14' 6" x 7' 1" (4.42m x 2.16m)

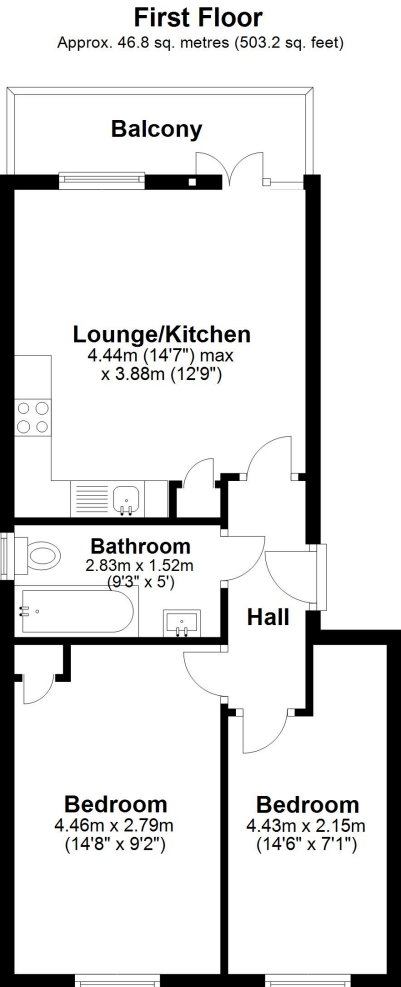
### Private Balcony

### Lease + Service Charge Information

We understand that the property will be sold with a share of the freehold and a long lease.

The service charge will be charged at £150 pcm.

There is no ground rent to pay.



Whilst every attempt has been made to ensure the accuracy of the floor plan contained here, measurements of doors, windows, rooms and any other items are approximate and no responsibility is taken for any error, omission or mis-statement. This plan is for illustrative purposes only and should be used as such by any prospective purchaser.  
Plan produced using PlanUp.

