

2 Bedroom(s), Semi-Detached Bungalow, Freehold

Harpenden Close, Dunscroft, Doncaster.



- 3D Virtual Tour Available
- Lounge
- Two Bedrooms
- Garage & Driveway
- Local Amenities, Schools and Transport Links

- Semi Detached Bungalow
- Kitchen
- Bathroom
- Front & Rear Garden
- South Facing Rear Garden

£145,000
For Sale

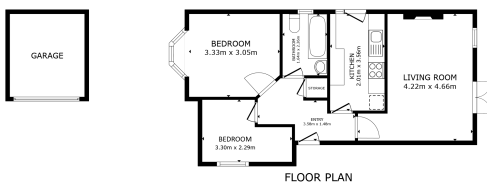
Book your viewing today Tel: 01302 247754

Owner's View

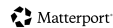
This semi detached bungalow on Harpenden Close provides a straightforward and comfortable layout, ideal for those seeking single-storey living. The reception room is light-filled and well-proportioned, offering space for both lounge and dining use. The kitchen is fitted with a range of units and leads directly out to the rear garden. There are two bedrooms, along with a bathroom comprising a bath with shower over, WC, and wash basin. Externally, the home features an enclosed rear garden with lawn and patio area, a driveway for off-street parking, and a detached garage offering security. Situated in Dunscroft, this bungalow is close to a variety of local shops, supermarkets, and services.

Ground Floor

Floor Plan



GROSS INTERNAL AREA
FLOOR PLAN 55.5 sq ft
EXCLUDED AREA: GARAGE 6.4 sq ft
TOTAL: 55.8 sq ft
SIZES AND DIMENSIONS ARE APPROXIMATE, ACTUAL MAY VARY



Kitchen



Lounge



Bedroom One





Bedroom Two



Bathroom



External

Front Aspect



Rear Garden



Property Information Form

Council Tax Band - A

Utilities - Mains Gas, Mains Electricity, Mains Water

Water Meter - Yes

Tenure -

Solar Panels -

Space Heating System - Combi Boiler

Approximate Heating System Installation Date -

Water Heating System -

Approximate Water Heating Installation Date -

Boiler Location - Kitchen

Approximate Electrical System Installation Date -

Permanent Loft Ladder -

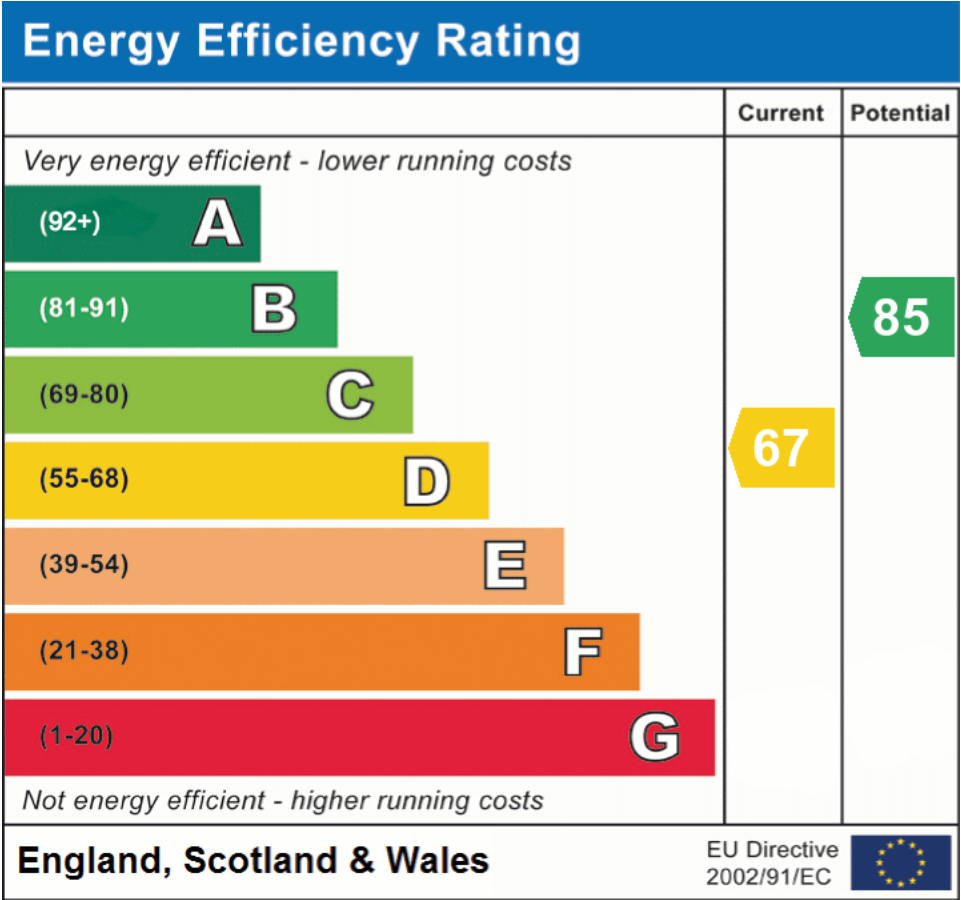
Loft Insulation - Yes

Loft Boarded out -

Whilst every effort is made to ensure that the information contained in these particulars is reliable, they do not constitute or form part of an offer or any contract. The Property Hive accept no liability for the accuracy of the contents, and therefore they should be independently verified by prospective buyers or tenants before agreeing an offer. All measurements provided are approximate and should be verified before exchange of contracts. No appliances, fixtures or fittings have been tested and should be checked by the buyer before exchange of contracts to ensure they are in good working order.

All measurements provided are approximate and should be verified before exchange of contracts. No appliances have been tested and should be checked to ensure they are in good working order.

Energy Performance Certificate



All measurements provided are approximate and should be verified before exchange of contracts. No appliances have been tested and should be checked to ensure they are in good working order.