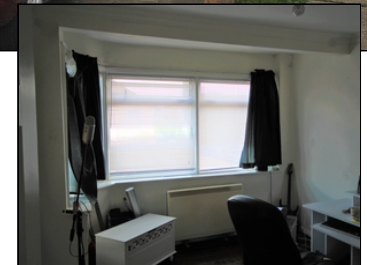




Ford Close, Rainham

£170,000

- DOUBLE BEDROOM
- FIRST FLOOR FLAT
- OWN 50% OF FREEHOLD
- OFF STREET PARKING
- GARAGE
- NO ONWARD CHAIN





GROUND FLOOR

Communal Entrance

Via hardwood door with opaque windows into:

Communal Porch

Fitted carpet, two hardwood front doors one for ground floor flat, one for first floor flat.

Front Entrance

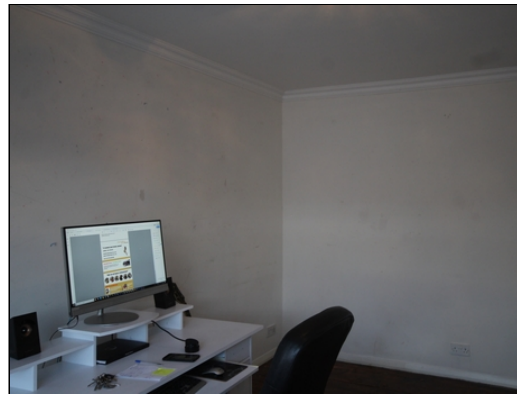
Via hardwood door, carpeted stairs with aluminium framed double glazed window to side leading to first floor.

Hallway

Loft hatch to ceiling, storage heater, fitted carpet.

Bathroom

2.04m x 1.96m (6' 8" x 6' 5") Opaque double glazed windows to front, low level flush WC, electric heater to ceiling, hand wash basin, panelled bath with shower attachment, tiled walls, tiled flooring.



Bedroom

3.37m x 3.17m (11' 1" x 10' 5") Double glazed window to side, electric heater, two built in cupboards one housing water tank, wood grain effect laminate flooring.

Lounge

4.46m x 3.17m (14' 8" x 10' 5") Aluminium framed double glazed bay style windows to front, electric heater, hardwood flooring.



Kitchen

2.43m x 1.95m (8' 0" x 6' 5") Aluminium framed double glazed window to front, range of matching wall and base units, one and half bowl inset sink and drainer with mixer tap, laminate work surfaces, space and plumbing for washing machine, space for fridge freezer, space for cooker, tiled splash backs, vinyl flooring.



EXTERIOR

Garage (To rear)

Power and lighting.

Front Exterior

Fully paved for off street parking.

