



This beautifully presented end of terrace period property built in the Victorian era offers substantial living accommodation throughout and blends the original features with modern decor.

On the ground floor, there is a spacious reception room with solid wood flooring and open fireplace which has ample living space for both entertaining and relaxed family gatherings. The heart of the home is the open plan kitchen/dining room which leads to a spacious utility room that allows access to the garden.

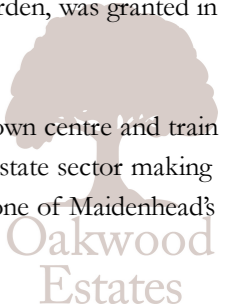
The first floor consists of two bedrooms, plus a modern family bathroom. On the second floor is the main bedroom, with roof lights to the front and views to the rear.

The property benefits from double glazed wood affect UPVC doors and windows throughout the majority of the property.

Outside, the property truly shines. The beautiful garden offers a peaceful retreat, with a patio area ideal for outdoor BBQs and socialising. There is plenty of space for children to play and to keep a keen gardener happy.

Fully approved Planning Permission to extend the ground floor across the width of the property, facing the garden, was granted in January 2025. Building plans, technical & structural drawing have been completed.

Added benefits include no chain allowing the possibility of a quick sale. The house is just a short walk to the town centre and train station (Elizabeth Line) providing easy access to London. There are some fantastic schools in the private and state sector making this an ideal family home. Don't miss this rare opportunity to own a historic yet beautifully updated home in one of Maidenhead's most desirable locations.



-  VICTORIAN END OF TERRACE
-  EXTENDED & REFURBISHED TO A HIGH LEVEL
-  NO CHAIN
-  UTILITY ROOM
-  THREE BEDROOMS
-  SHORT WALK TO MAIDENHEAD TOWN CENTRE AND CROSSRAIL STATION (ELIZABETH LINE)
-  CHARACTER FEATURES
-  PLANNING PERMISSION APPROVED

					
x3	x2	x1	0	Y	N
Bedrooms	Reception Rooms	Bathrooms	Parking Spaces	Garden	Garage

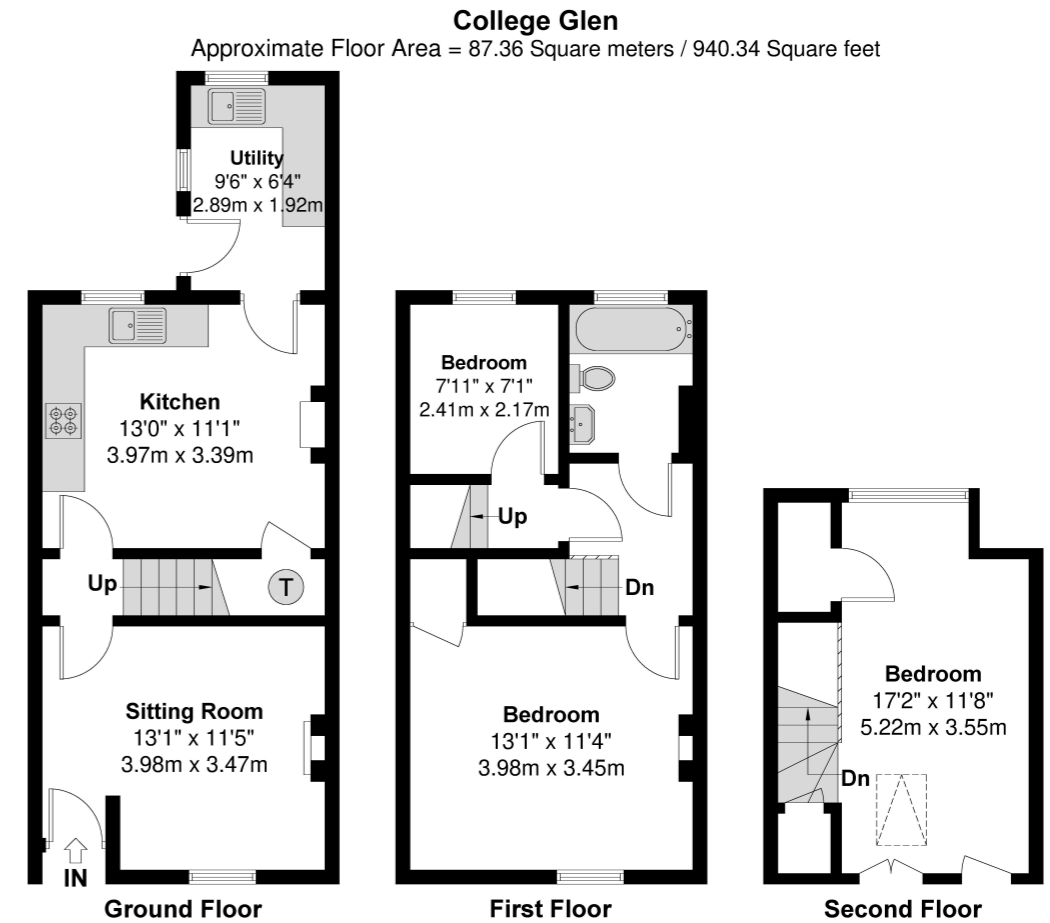


Illustration for identification purposes only, measurements are approximate, not to scale.

Prospective purchasers should be aware that these sales particulars are intended as a general guide only and room sizes should not be relied upon for carpets or furnishing. We have not carried out any form of survey nor have we tested any appliance or services, mechanical or electrical. All maps are supplied by Goview.co.uk from Ordnance Survey mapping. Care has been taken in the preparation of these sales particulars, which are thought to be materially correct, although their accuracy is not guaranteed and they do not form part of any contract.

Schools And Leisure

There are numerous local sports clubs including tennis, rugby, rowing and football, various fitness centres and racing at Ascot and Windsor. The River Thames can also be accessed at Maidenhead with many walks to be enjoyed along the Thames Path to Windsor and Cookham. Nearby amenities include numerous golf courses, the newly built Braywick Leisure centre, a multiplex cinema, shops and restaurants.

Location

The property is situated in a popular residential location just 0.7 miles from the town centre and 0.7 miles from the Crossrail train station and with easy access to the A404M and M4. There is an excellent selection of nearby schooling options including highly rated schools in both the private and public sectors'

Council Tax
Band D

