



Webheath, Netherwood Street, West Hampstead, NW6

£479,950



Webheath, Netherwood Street, West Hampstead, NW6

Accessed via a private entrance is this generously proportioned two double bedroom, two bathroom (plus separate WC) duplex apartment benefiting from a delightful large south facing private terrace.

This 852 Sq Ft (79 Sq M) flat is well presented throughout and with it being arranged over two floors and featuring a private entrance, this apartment offers a "house like feel".

Webheath is ideally located within close proximity to the local amenities, restaurants and transport links located both on West End Lane and Kilburn High Road. Local nurseries and schools are also situated close by.

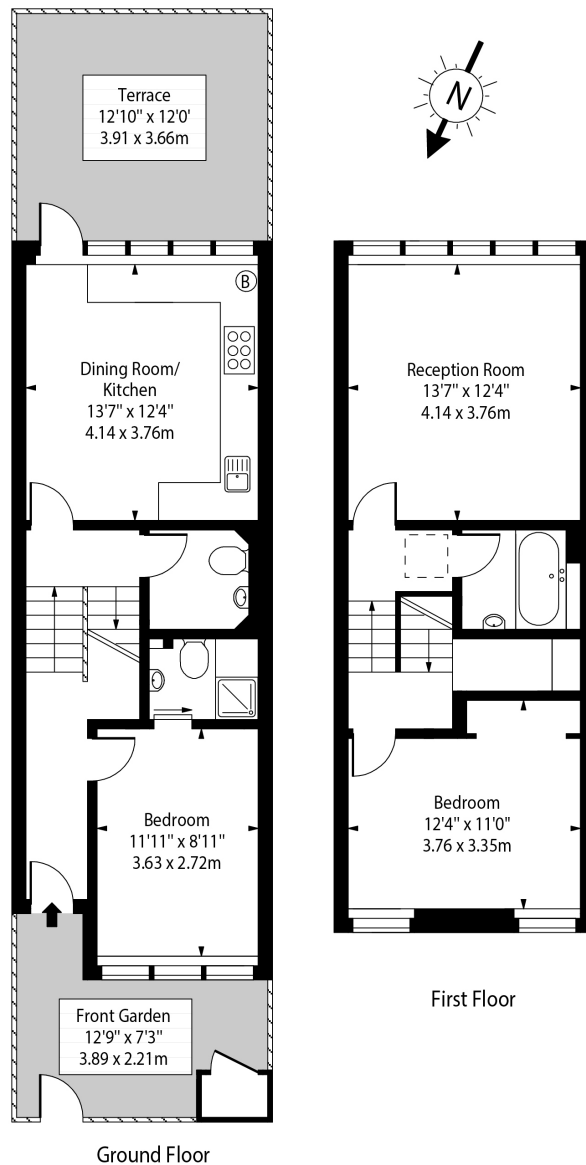
Features

- Two Double Bedrooms
- Two Bathrooms
- Separate WC
- Duplex Apartment
- 852 Sq Ft (79 Sq M) Of Internal Space
- Ideally Located
- Private Entrance
- Delightful South Facing Terrace
- Perfect For Families or a FTB
- Generous Storage Throughout



Webheath,
Netherwood Street,
West Hampstead,
NW6

Webheath,
Netherwood Street NW6



Approx Gross Internal Area 852 Sq Ft - 79.15 Sq M

For Illustration Purposes Only - Not To Scale Floor Plan by www.nogaphotostudio.com Ref: No.49765

This floor plan should be used as a general outline for guidance only. Any intending purchaser or lessee should satisfy themselves by inspection, searches, enquiries and full survey as to the correctness of each statement. Any areas, measurements or distances quoted are approximate and should not be used to value a property or be the basis of any sale or let.