



## **The Greenway, Potters Bar, Hertfordshire, EN6 2NB**

**£840,000**

- **GENEROUS PLOT**
- **THREE DOUBLE BEDROOMS**
- **SUPERB MODERN FITTED KITCHEN**
- **SOUTH FACING GARDEN**
- **LARGE DRIVEWAY**
- **28FT DUAL ASPECT LOUNGE DINER**
- **EN-SUITE SHOWER ROOM TO MASTER BEDROOM**



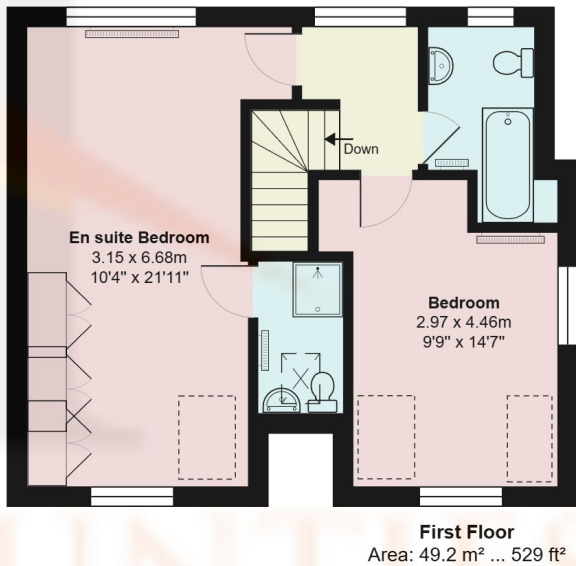
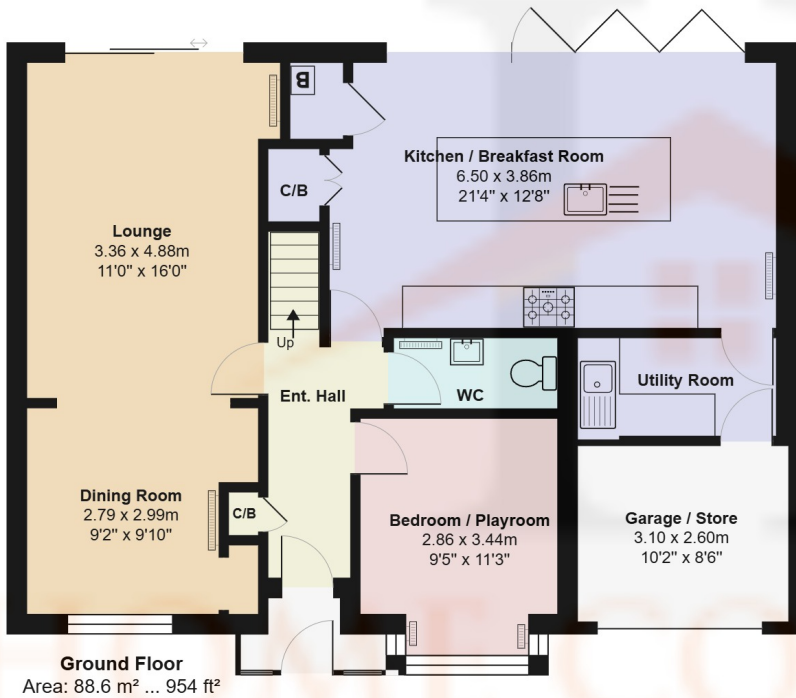
# The Greenway, Potters Bar, Hertfordshire, . EN6 2NB

## £840,000 Freehold

Ideally situated on a peaceful residential turning, this beautifully presented home is just a 15-minute walk from Potters Bar Mainline Train Station, as well as local shops and restaurants.

Set on a generous plot, the property offers a large driveway with ample parking for multiple vehicles. Upon entering, you're welcomed by a versatile front room that can serve as a children's playroom or a third bedroom. To one side of the home, a stunning 28' dual-aspect lounge/dining room provides an expansive space for entertaining and relaxing. The heart of the home is the modern, spacious kitchen/breakfast room, complete with a large island/breakfast bar and luxurious marble worktops. Additional ground floor features include a separate utility room, guest WC, and extra storage space.

Upstairs, the property boasts a spacious principal bedroom with fitted wardrobes and an en-suite shower room, a second bedroom, and a contemporary family bathroom. Externally, the private rear garden includes a crazy-paving patio, well-maintained lawn, and an additional rear patio—perfect for outdoor entertaining. Further benefits include a half-size garage with roller door.



### The Greenway, Hertfordshire EN6

Total Area: 137.8 m² ... 1483 ft²

All measurements are approximate and for display purposes only

