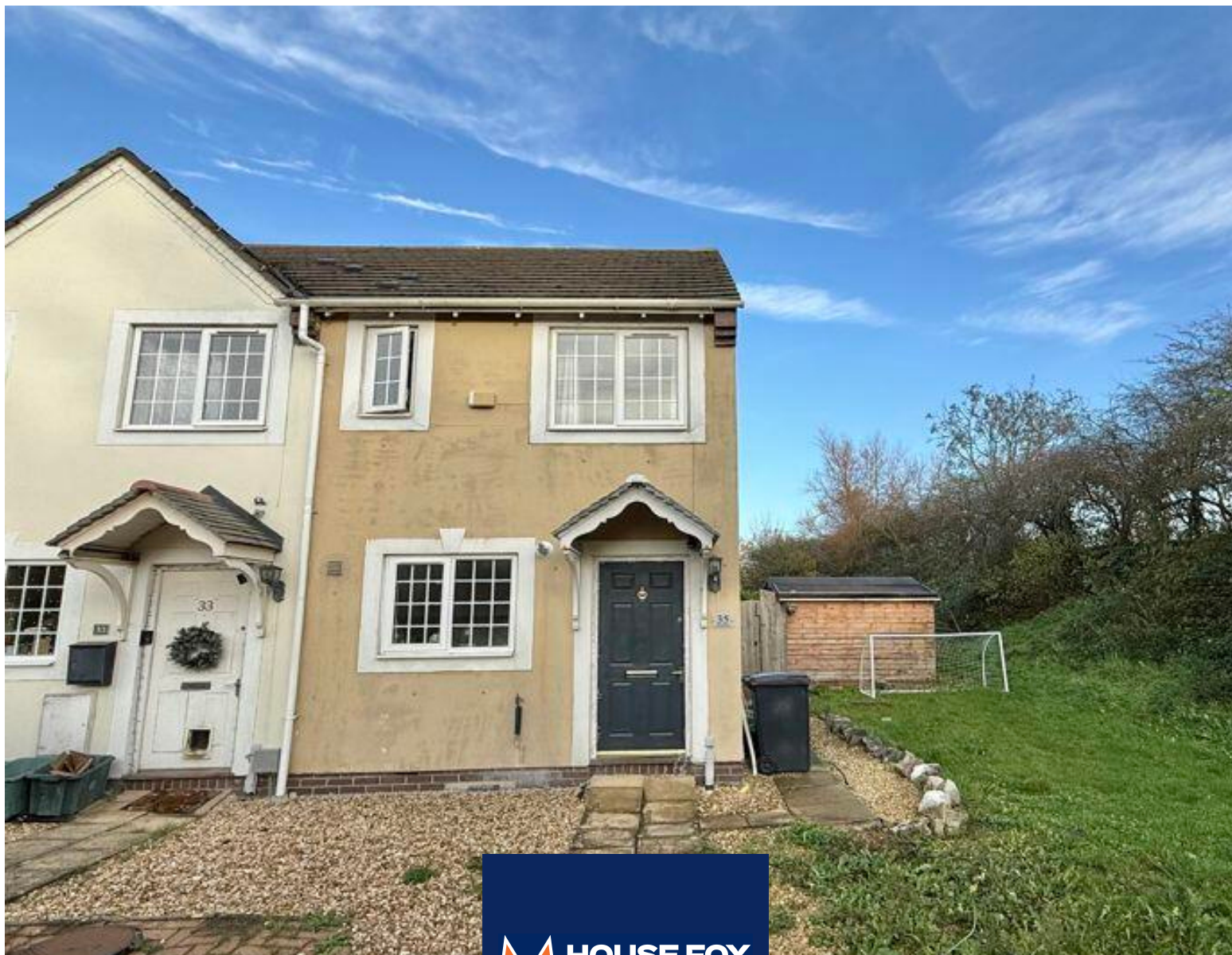


Daramead, Weston-Super-Mare, Somerset. BS24 7EH

£220,000 Freehold

FOR SALE



www.housefox.co.uk

01934 314242
01275 404601
01278 557700
sales@housefox.co.uk

PROPERTY DESCRIPTION

HOUSE FOX ESTATE AGENTS PRESENTS.....Set at the end of a cul-de-sac, this modern end of terraced house is within easy access of the M5 motorway and the local shops, public houses and Worle High Street.

The house is offered for sale with no onward chain, and comprises hallway with archway to the kitchen, lounge, conservatory, 2 bedrooms, bathroom, plus gas central heating, double glazing, 2 parking spaces, nice size rear garden.

Darweed is a cul-de-sac of modern homes, and within a 10 minute walk you have the Morrisons shopping complex that has a Costa, Boots, Matalan, Subway, Fish and Chip Shop, and a children's nursery, if you want more shops, they are in Worle High Street, and you can drive there in 5 minutes.

Please note the pictures were taken before the tenants moved in. The property will be sold with vacant possession.

FEATURES

- End of terrace house
- 2 bedrooms
- Conservatory
- Nice size garden
- 2 parking spaces
- Double glazing
- Gas central heating (boiler fitted 2021)
- EPC-tbc



ROOM DESCRIPTIONS

Main front door to the hallway

Hallway:

Arch to kitchen, door to the lounge

Kitchen:

Sink unit, floor and wall units, built in oven and hob, double glazed window

Lounge:

Stairs to the first floor, radiator, sliding door to the conservatory

Conservatory

Double glazed windows, door to the garden

First floor landing

Bedroom 1:

Radiator, double glazed window

Bedroom 2:

Radiator, double glazed window

Bathroom:

Bath, shower over, wash hand basin, WC, radiator, double glazed window

Parking:

2 spaces to the front, tandem style

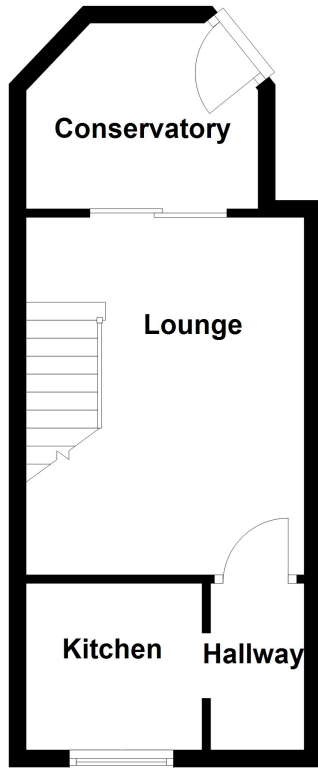
Garden:

A nice size garden, with patio area, lawn area and garden shed



FLOORPLAN & EPC

Ground Floor



First Floor

