



Offers Over £160,000  
92 Lochleven Road, Lochore, Lochgelly, Fife, KY5 8DA



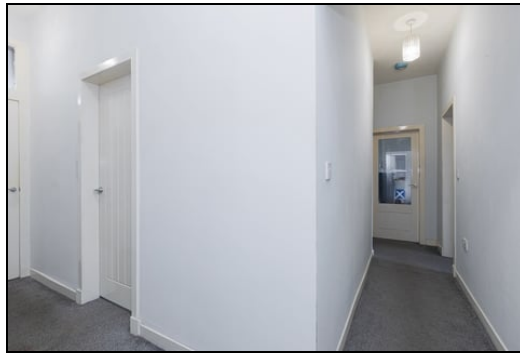
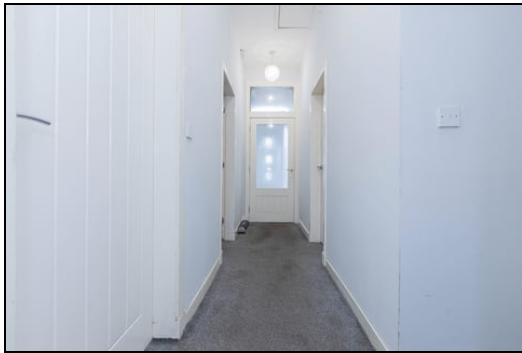
# 92 Lochleven Road, Lochore, Lochgelly, Fife, KY5 8DA

HOME REPORT VALUE £170,000 Delmor are delighted to present to the market this rarely available spacious mid terraced bungalow set in a popular location close to all local amenities and on a bus route. Lochore has a great range of shopping, Benarty Primary School and Lochore Meadows Country Park is within walking distance. There are also close links to the A92 for the commuter. The accommodation briefly consists of - Entrance vestibule through to the hallway. Bright lounge to the rear with French doors leading to the gardens. Modern kitchen with floor and wall mounted units incorporating electric hob with overhead extractor fan. Integrated microwave and electric oven. American style fridge/freezer. Ample space for dining table and chairs. Utility room has units matching the kitchen. Plumbed for washing machine. Master bedroom with en suite shower room. Double bedroom with dressing area. Two further double bedrooms. Family bathroom comprising of bath with overhead shower and screen. WC and wash hand basin. There is an extensive enclosed rear garden which has decked area with pergola. Chipped, astro turf and mono blocked areas. Garden shed. The property also benefits from gas central heating and double glazing. Early viewing is highly recommended on this family sized property to fully appreciate the space and layout on offer.

## Ground Floor

### Entrance Vestibule

### Hallway

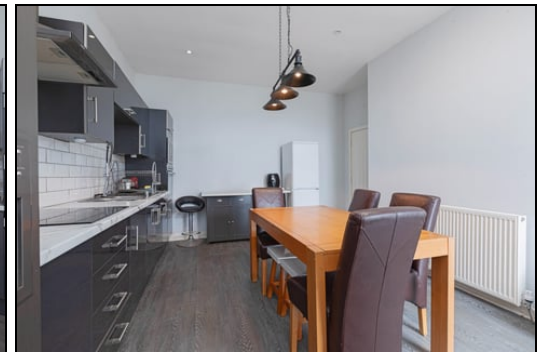


### Lounge



4.94m x 4.08m (16' 2" x 13' 5")

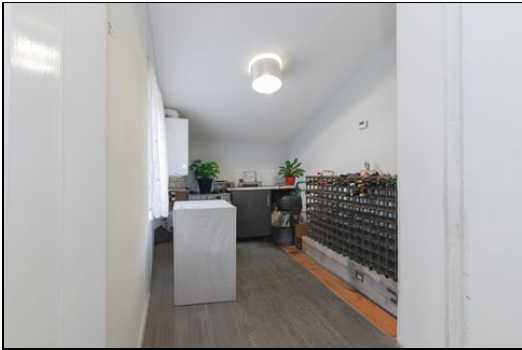
### Dining Kitchen



4.95m x 4.06m (16' 3" x 13' 4")



**Utility**



3.55m x 2.14m (11' 8" x 7' 0")

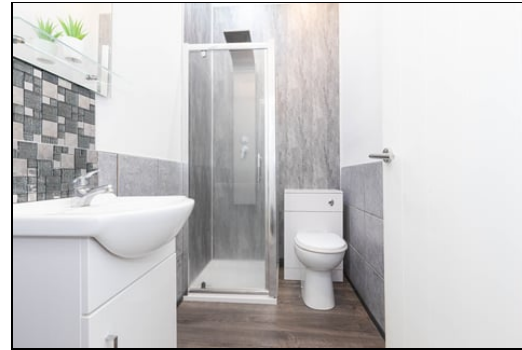
**Master Bedroom**



4.08m x 4.02m (13' 5" x 13' 2")



**En Suite**



2.23m x 1.31m (7' 4" x 4' 4")

**Bedroom**



4.03m x 3.37m (13' 3" x 11' 1")





## Dressing Area



4.03m x 1.76m (13' 3" x 5' 9")

## Bedroom

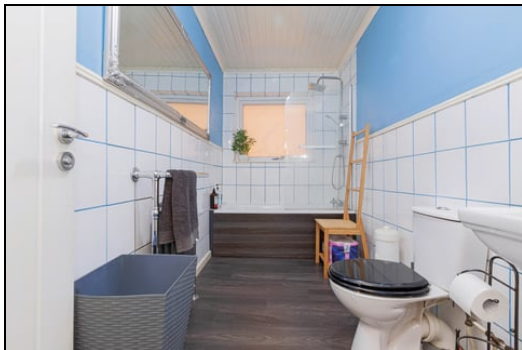


3.59m x 3.44m (11' 9" x 11' 3")

## Bedroom

4.55m x 2.4m (14' 11" x 7' 10")

## Family Bathroom



3.37m x 1.62m (11' 1" x 5' 4")

## Gardens

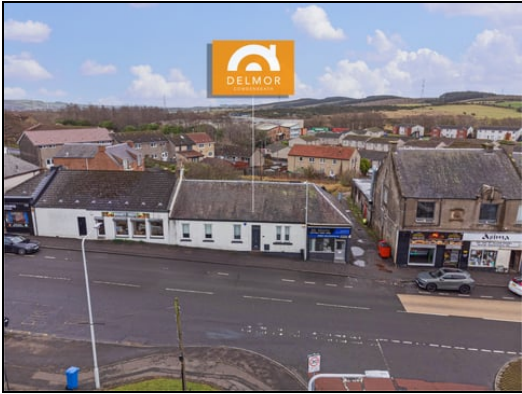


## Extras

All floor coverings. Electric hob and extractor fan. Integrated microwave and electric oven. American style fridge/freezer.

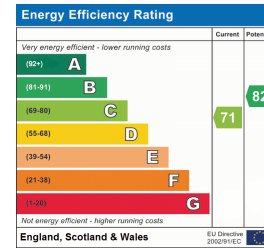
## SONIC TAPE

All measurements have been taken using a sonic tape measure and therefore, may be subject



## FREE VALUATION

How much is your property worth?. We can provide you with the answer. We offer a free valuation service without cost or obligation. Please call this office for an appointment.



to a small margin of error.

## MEASUREMENTS

All measurements are approximate.

## APPLIANCES/SERVICES

The mention of any appliances and/or services within these Sales Particulars does not imply they are in fully working order.

## MORTGAGE & FINANCIAL ADVICE

Qualified Mortgage and Financial Consultants can provide you with up to the minute information on many of the rates available. To arrange an appointment telephone this office. YOUR HOME IS AT RISK IF YOU DO NOT KEEP UP REPAYMENTS ON A MORTGAGE OR OTHER LOANS SECURED ON IT. Full written quotation available on request. A suitable life policy may be required. Loans are subject to status. Minimum age 18.

