



Day & Co
ESTATE AGENTS

28 Cavendish Street
Keighley
BD21 3RG



22 North View Street,
Beechcliffe, Keighley, West
Yorkshire, BD20 6AD

£160,000

T: 01535 664609

W: www.dayandcoestateagents.co.uk

E: keighley@dayandcoestateagents.co.uk

- SPACIOUS TERRACE HOUSE
- TWO RECEPTION ROOMS
- REAR GARDEN

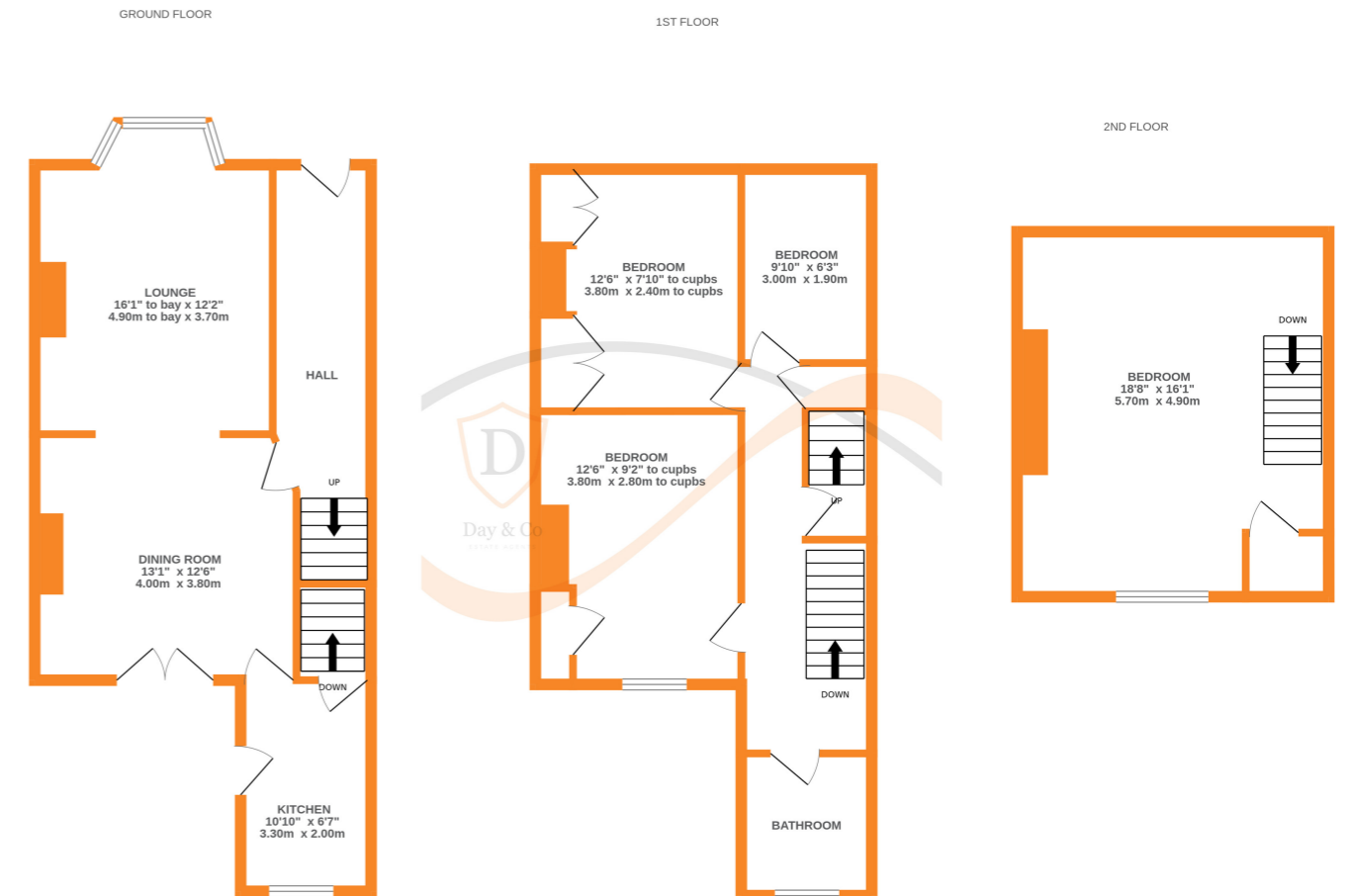
- FOUR BEDROOMS
- ACCOMMODATION OVER 3 FLOORS
- EPC RATING E

SUMMARY

** A SPACIOUS, FOUR BEDROOM BAY FRONTED TERRACE HOUSE, TWO RECEPTION ROOMS, ACCOMMODATION OVER THREE FLOORS, TWO LARGE CELLAR ROOMS, REAR GARDEN, EPC RATING E **

FULL DESCRIPTION

Offered for sale in the Beechcliffe area of Keighley is this spacious, four bedroom bay fronted terrace house. This property enjoys accommodation over three floors along with two large cellar rooms and benefits from having a rear garden. In brief comprises - Ground Floor - Entrance Hallway, Bay fronted Lounge, Dining Room with double doors to the rear garden, Kitchen. Two large cellar rooms and coal cellar. First Floor - Three Bedrooms, Bathroom. Upper Floor - Large Bedroom with Dormer window to the rear. Gas Central Heating & Double Glazing. Outside - Front garden, garden to the rear (access path for neighbours to rear). EPC RAting E



Whilst every attempt has been made to ensure the accuracy of the floorplan contained here, measurements of doors, windows, rooms and any other items are approximate and no responsibility is taken for any error, omission or mis-statement. This plan is for illustrative purposes only and should be used as such by any prospective purchaser. The services, systems and appliances shown have not been tested and no guarantee as to their operability or efficiency can be given.
Made with Metropix ©2024