



47 North Road, Tollesbury, Maldon, Essex. CM9 8RQ

NO ONWARD CHAIN, walking distance to shops and sea wall, TWO BEDROOMS, character cottage, OPEN PLAN LOUNGE AND DINING AREA, kitchen and bathroom, WEST FACING REAR GARDEN.



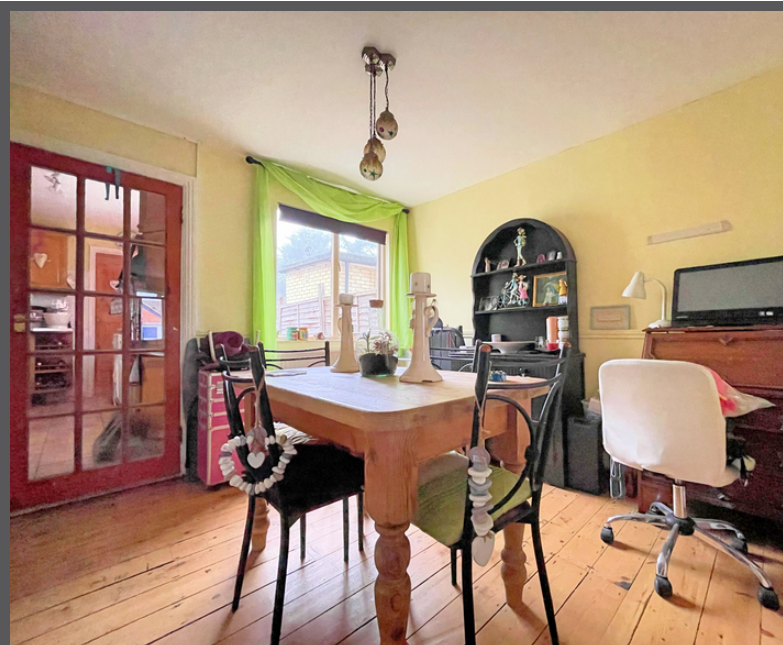
£250,000

PROPERTY DESCRIPTION

Sold with no onward chain, this mid terrace cottage is located walking distance from the centre of Tollesbury and the sea wall. The ground floor offers an open plan living space the lounge is at the front of the house and has working fireplace, the dining space offers room for a table and chairs and leads to a classic galley kitchen. The property also has a downstairs bathroom. The first floor is home to two double bedrooms. Externally the cottage has a westerly facing garden measuring 72ft approx. This cottage is in a great location, and we recommend an early viewing as houses in the village of this age and style are very popular.

FEATURES

- No onward chain, character cottage with an open fire
- Two double bedrooms, open plan lounge and dining room
- West facing rear garden
- Walking distance to shops and sea wall

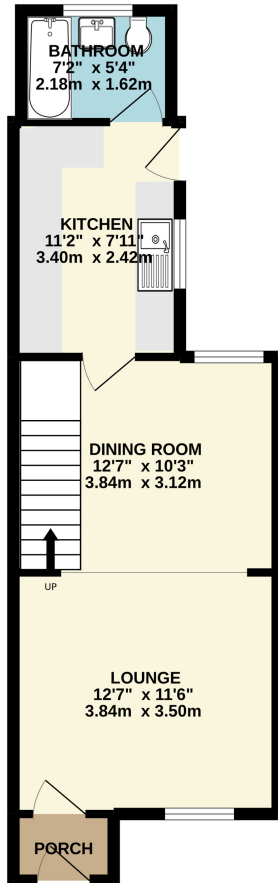


ROOM DESCRIPTIONS

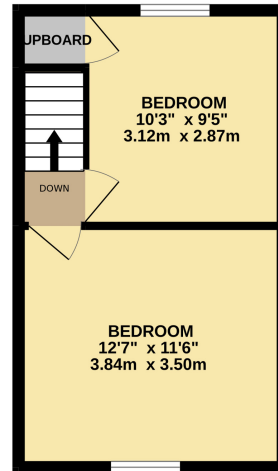


FLOORPLAN

GROUND FLOOR
415 sq.ft. (38.6 sq.m.) approx.



1ST FLOOR
274 sq.ft. (25.4 sq.m.) approx.



TOTAL FLOOR AREA : 689 sq.ft. (64.0 sq.m.) approx.

Whilst every attempt has been made to ensure the accuracy of the floorplan contained here, measurements of doors, windows, rooms and any other items are approximate and no responsibility is taken for any error, omission or mis-statement. This plan is for illustrative purposes only and should be used as such by any prospective purchaser. The services, systems and appliances shown have not been tested and no guarantee as to their operability or efficiency can be given.
Made with Metropix ©2022