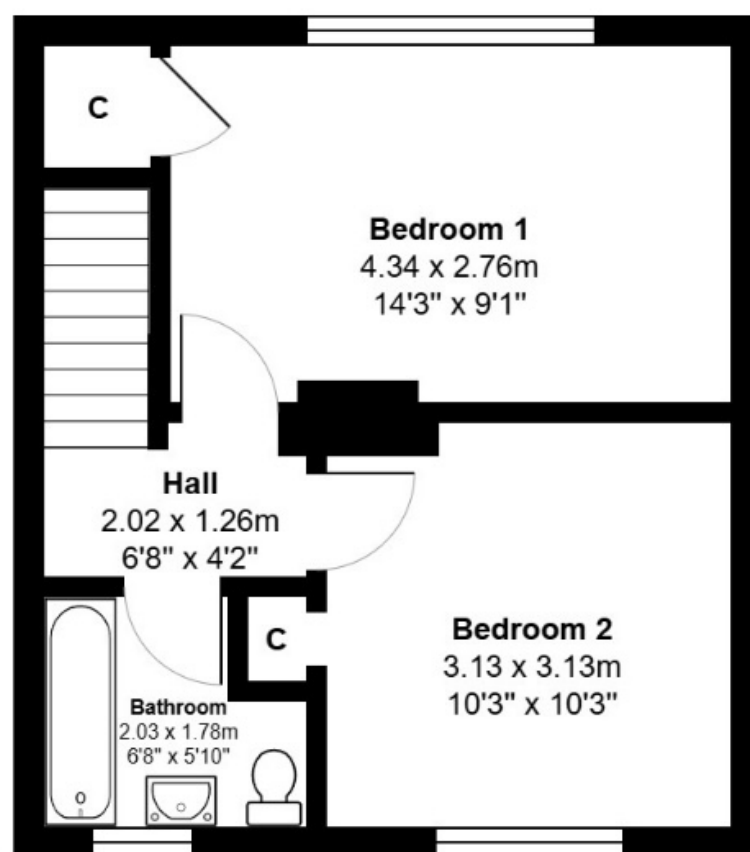


Ground Floor



First Floor

Total Area: 64.2 m² ... 691 ft²

All measurements are approximate and for display purposes only



Chaucer Close, Berkhamsted

£475,000

An opportunity to acquire a semi detached house in need of refurbishment, with the potential for a two story side extension to create a four bedroom dwelling. The property is located in a quiet cul de sac within a short level walk of the centre of Berkhamsted town centre. The accommodation comprises of entrance hallway, kitchen, double aspect sitting room, on the first floor there are two large bedrooms and a bathroom. There is off road parking for three vehicles and a private south westerly facing rear garden.

Ground Floor

Entrance Hall

Stairs to first floor landing, understairs storage cupboard, replacement UPVC front door.

Kitchen

A range of wall and base units in white with four ring electric hob, stainless steel sink, electric Bosch, wall mounted Gas boiler, extractor hood.

Living Room

A double aspect room, with French doors to the rear garden, window to front, radiator, door to entrance hall.

First floor

Landing

Loft hatch, doors leading to

Bedroom One

Window to front, built in cupboard.

Bedroom Two

Window to rear garden.

Bathroom

Window to rear, panelled bath, wash hand basin, WC, tiled walls.

Outside

To the rear

A south westerly facing garden with panelled fencing, there is

a four meter side garden which would be suitable space for a side extension.

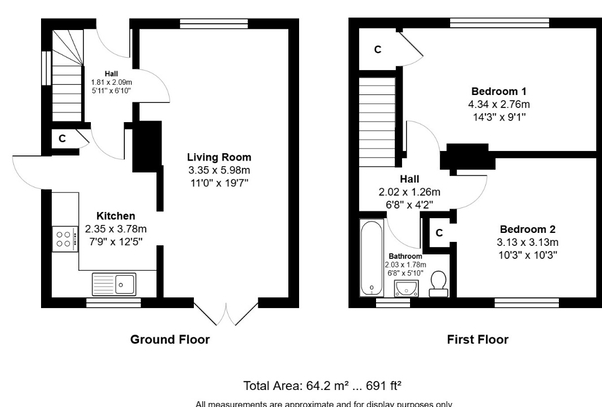
To the front

With off road parking for three cars.

Extension potential

There is a 4 meter side garden area located behind the front bushes with potential for a two storey side extension. There is a house in the cul de sac opposite which has been extended two stories on the side.

www.whitewoodproperties.co.uk



WHITWOOD
ESTATES
COUNTRY HOMES & VILLAGE PROPERTIES

