

## 26 Neptune Drive

FOLKESTONE, Folkestone  
CT20 3UN

**£425,000 FREEHOLD**

DRAFT DETAILS.....FOR SALE WITH BURNAP AND ABEL.... Burnap and Abel are delighted to introduce this stunning for bedroom detached property located in the sought after location of Neptune Drive on the new Shorncliffe heights development. This property is in our opinion excellent condition and comprises of a large lounge, kitchen/dining room, four bedrooms and a family bathroom. Additional benefits include En-suite to master, downstairs W.C, Garage and off road parking and a large corner plot. For your chance to view call Burnap and Abel now on 01303 258590.



**Entrance Hall**

**Lounge**

14' 8" x 11' 11" (4.47m x 3.63m)

**Kitchen/Dining Room**

18' 8" x 11' 1" (5.69m x 3.38m)

**Utility Room**

**W.C**

**Bedroom One**

11' 10" x 10' 9" (3.61m x 3.28m)

**En-suite**

**Bedroom Two**

11' 7" x 9' 3" (3.53m x 2.82m)

**Bedroom Three**

11' 1" x 9' 2" (3.38m x 2.79m)

**Bedroom Four**

7' 9" x 7' 3" (2.36m x 2.21m)

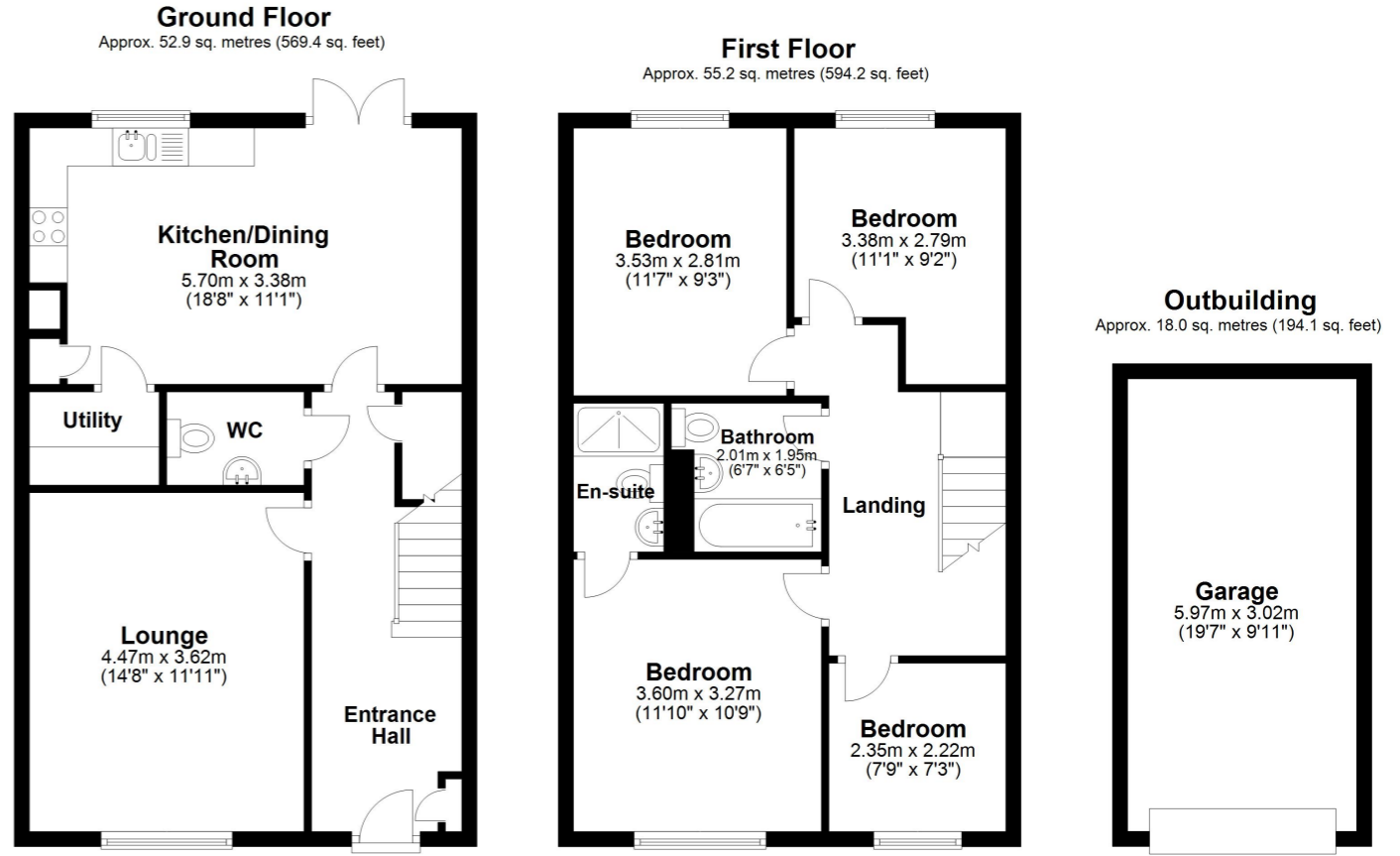
**Family bathroom**

6' 7" x 6' 5" (2.01m x 1.96m)

**Garage**

19' 7" x 9' 11" (5.97m x 3.02m)

**Driveway**



Total area: approx. 126.1 sq. metres (1357.7 sq. feet)

Whilst every attempt has been made to ensure the accuracy of the floor plan contained here, measurements of doors, windows, rooms and any other items are approximate and no responsibility is taken for any error, omission or mis-statement. This plan is for illustrative purposes only and should be used as such by any prospective purchaser.  
Plan produced using PlanUp.

