



Alexandra Avenue, CAMBERLEY, Surrey GU15 3BG

PRICE £375,000 Freehold

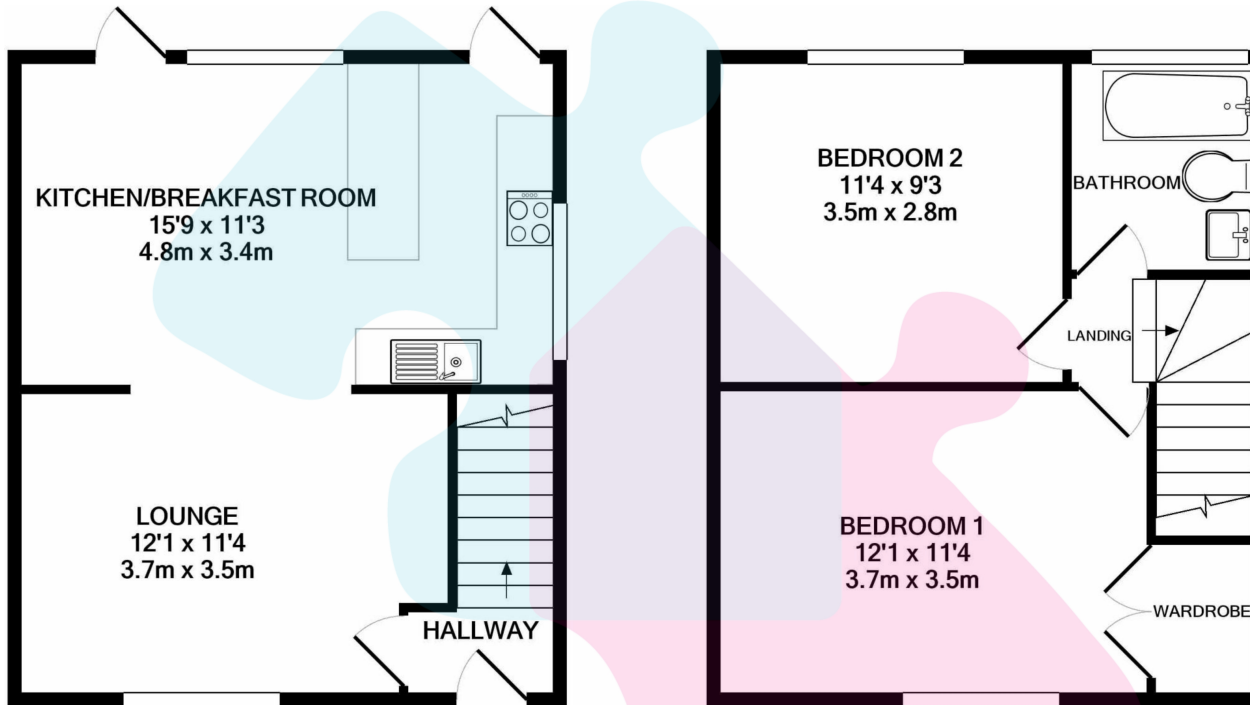
Jigsaw Estates are excited to present to the market this beautifully presented semi-detached home with a modern interior and secluded rear garden situated in a quiet residential road within close proximity of a number of local amenities.

Explore this charming 2 double bedroom semi-detached house featuring stylish living spaces and a contemporary, open plan kitchen-diner, perfect for modern living. There is a re-fitted bathroom, double glazing and gas central heating. The rear garden offers a patio area with side access to the front and the remainder of the garden mainly laid to lawn with flower and mature shrub borders.

The property is within easy reach of both Camberley town centre and Frimley Village with Frimley Park Hospital also less than 2 miles away. There are excellent transport links nearby with Junction 4 of the M3, easy access to the A30 and Camberley train station.

In our opinion this would be an ideal first time purchase and viewings are highly recommended.





GROUND FLOOR
APPROX. FLOOR
AREA 431 SQ.FT.
(40.0 SQ.M.)

1ST FLOOR
APPROX. FLOOR
AREA 431 SQ.FT.
(40.0 SQ.M.)

TOTAL APPROX. FLOOR AREA 861 SQ.FT. (80.0 SQ.M.)

Whilst every attempt has been made to ensure the accuracy of the floor plan contained here, measurements of doors, windows, rooms and any other items are approximate and no responsibility is taken for any error, omission, or mis-statement. This plan is for illustrative purposes only and should be used as such by any prospective purchaser. The services, systems and appliances shown have not been tested and no guarantee as to their operability or efficiency can be given

Made with Metropix ©2020

- TWO DOUBLE BEDROOMS
- LIVING ROOM
- REAR GARDEN
- DOUBLE GLAZED
- CLOSE TO LOCAL SCHOOLS

- OPEN PLAN KITCHEN/DINING ROOM
- BEAUTIFULLY PRESENTED & SPACIOUS KITCHEN/DINING ROOM
- RE-FITTED BATHROOM
- CLOSE TO LOCAL AMENITIES

