



46a Amherst Road, Bexhill-on-Sea, East
Sussex, TN40 1QW

£250,000



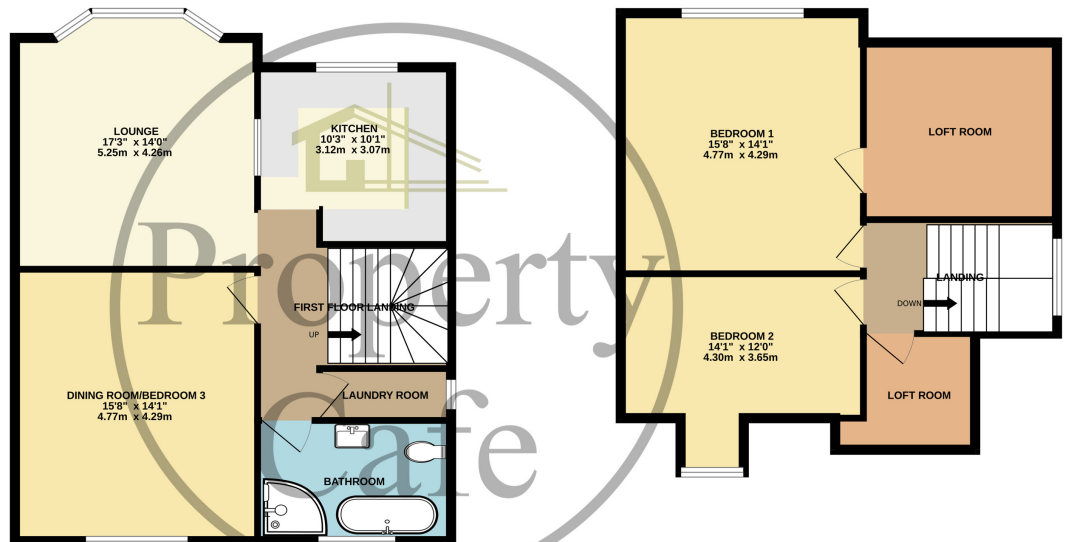
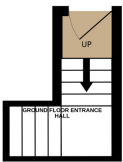
- Two/Three Bedroom Split Level Flat For Sale
- Modern Fitted Kitchen
- Utility Room
- Stunning Period Features & High Ceilings
- Modern Fitted Bathroom
- Excellent Decorative Order Throughout
- Gas Central Heated
- Long Lease & Reasonable Service Charges
- Sought After Town Centre Location
- Viewing Highly Recommended



GROUND FLOOR
38 sq.ft. (3.5 sq.m.) approx.

1ST FLOOR
734 sq.ft. (68.2 sq.m.) approx.

2ND FLOOR
585 sq.ft. (54.1 sq.m.) approx.



TOTAL FLOOR AREA : 1353 sq.ft. (125.7 sq.m.) approx.

Whilst every attempt has been made to ensure the accuracy of the floorplan contained here, measurements of doors, windows, rooms and any other items are approximate and no responsibility is taken for any error, omission or mis-statement. This plan is for illustrative purposes only and should be used as such by any prospective purchaser. The services, systems and appliances shown have not been tested and no guarantee as to their operability or efficiency can be given.
Made with Metropix ©2024