



TEMPEST AVENUE

EN6 5LH





Freehold

£699,950

Accommodation

This large FOUR BEDROOM semi detached home is ideally located on a corner plot on this quiet turning in Potters Bar, just moments from Oakmere Park and Potters Bar High Street, and just a 15 minute walk to Potters Bar Mainline Station. The property having had a double storey side extension benefits from porch entrance a large dual aspect lounge to one side, dining room, separate kitchen and downstairs cloakroom on the ground floor, whilst the first floor comprises of Four bedrooms one of which a large dual aspect with potential to add an en-suite, plus separate family bathroom. Externally the home boasts a private garden with access to rear plus off street parking to the front for several cars.

The home offers further potential for a rear extension and loft conversion and has a garage to the rear with access that could be further extended.

Viewing advised.

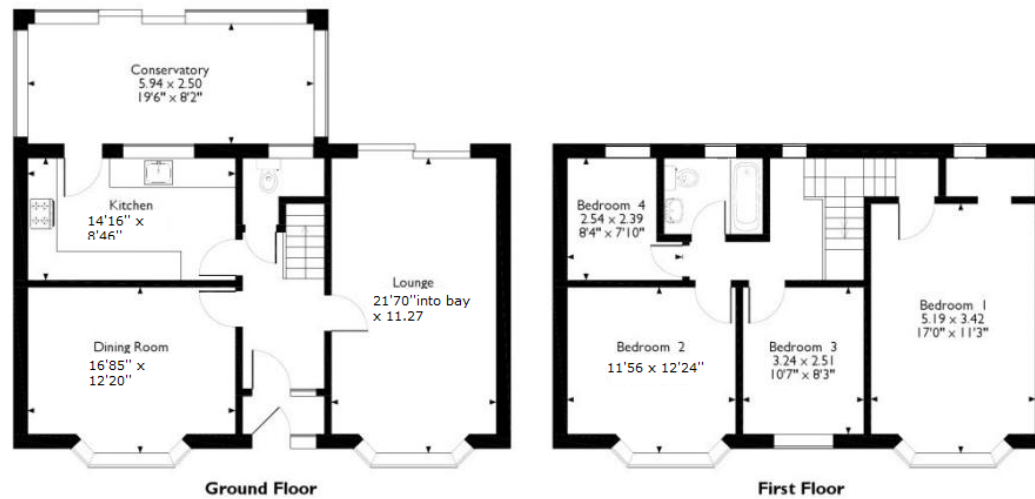
TEMPEST AVENUE, POTTERS BAR, HERTFORDSHIRE. EN6 5LH



TEMPEST AVENUE, POTTERS BAR, HERTFORDSHIRE. EN6 5LH



Tempest Avenue, Potters Bar, Hertfordshire



IMPORTANT: we would like to inform prospective purchasers that these sales particulars have been prepared as a general guide only. A detailed survey has not been carried out, nor the services, appliances and fittings tested. Room sizes should not be relied upon for furnishing purposes and are approximate. If floor plans are included, they are for guidance only and may not be to scale. If there are any important matters likely to affect your decision to buy, please contact us before viewing the property.