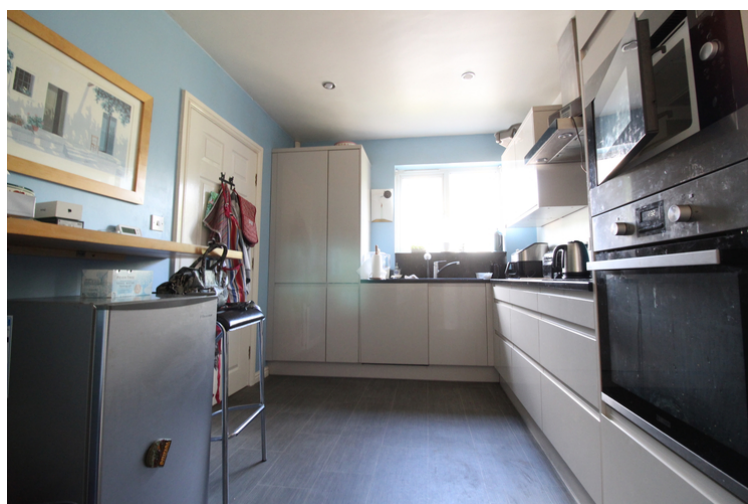


Reduced
1 Elderberry Close, East Morton, Keighley, West
Yorkshire, BD20 5WA



- EPC Rating Is D
- Spacious Modern Detached Family Home
- Four Bedrooms & Master En-Suite
- Two Reception Rooms
- Drive & Double Garage/Views Over Fields
- Cul-De-Sac Position/Popular Modern Development In East Morton

Offers Over £369,995

Keighley

01535 664609