

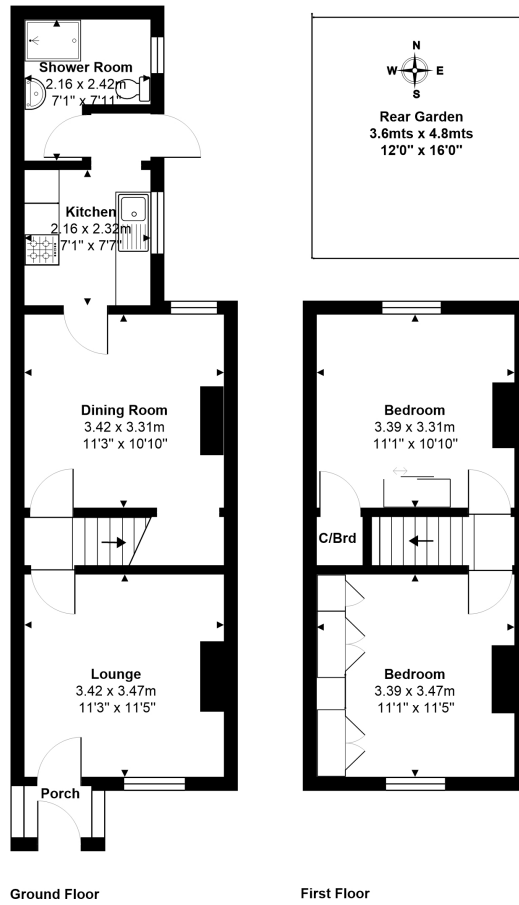


Myrtle Road, Hounslow, Greater London, TW3 1QE

IN NEED OF COMPLETE MODERNISATION THROUGHOUT THIS SPACIOUS 2 BEDROOM PROPERTY IS IDEALLY LOCATED WITHIN MOMENTS OF HOUNSLOW MAINLINE STATION AND OFFERS A GREAT OPPORTUNITY FOR IMPROVEMENT/EXTENTION (S.T.R.P.P). The property currently comprises a spacious lounge, dining room, separate kitchen, two well proportioned bedrooms, bathroom and secluded rear garden. No Onward Chain. Viewings Highly Recommended!

ROOM DESCRIPTIONS

FLOORPLAN



Total Area: 66.1 m² ... 711 ft²

All measurements are approximate and for display purposes only.