

# Market Place

Warminster, BA12 9FH

COOPER  
AND  
TANNER



£1 60,000 Freehold

1 1 1 EPC D

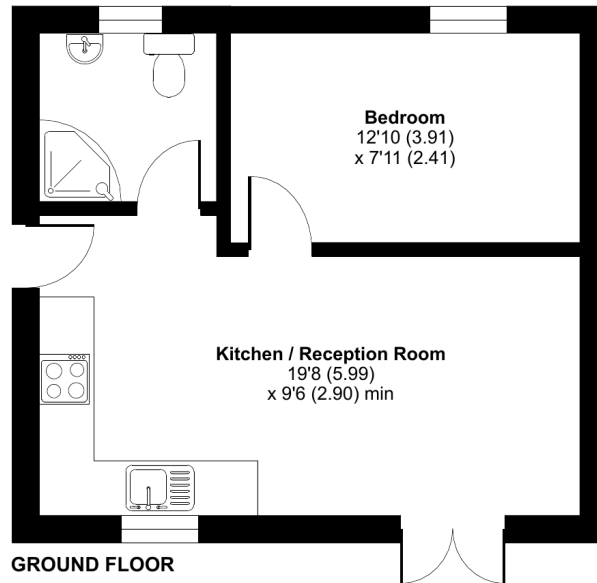
## Description

This modern one bedroom link detached bungalow is quietly tucked away, yet is set in the heart of the town centre. . It is one of two bungalows and is the smaller of the two. It has his own private enclosed rear garden at the back. There is an option to pay a monthly amount to have your own parking space. The property is offered with NO ONWARD CHAIN. It has his own private enclosed rear garden at the back. There is an option to pay a monthly amount to have your own parking space. There is an open plan kitchen/living/diner, bathroom and bedroom. Outside there is an enclosed private garden.

## Butchers Court, Market Place, Warminster, BA12

Approximate Area = 350 sq ft / 32.5 sq m

For identification only - Not to scale



Floor plan produced in accordance with RICS Property Measurement 2nd Edition, incorporating International Property Measurement Standards (IPMS2 Residential). © nichcom 2025. Produced for Cooper and Tanner. REF: 1270099



### Features

- Link detached bungalow in village location
- Open kitchen/living/diner
- One bedroom
- Bathroom
- Private enclosed garden
- Optional parking
- No onward chain

### Local Information

- Council Tax Band A
- Tenure Freehold
- EPC Rating D



### WARMINSTER OFFICE

Telephone 01985 215579

48-50, Market Place, Warminster, Wiltshire BA12 9AN

[warminster@cooperandtanner.co.uk](mailto:warminster@cooperandtanner.co.uk)

**COOPER  
AND  
TANNER**

Important Notice: These particulars are set out as a general outline only for the guidance of intended purchasers and do not constitute, nor constitute part of, an offer or contract. All descriptions, dimensions, reference to condition and necessary permissions for use and occupation, warranties and other details are given without responsibility and any intending purchasers should not rely on the same as statements or representations of fact but must satisfy themselves by inspection or otherwise as to the correctness of each of them.



**RICS**



**OnTheMarket**