

## 81 Chart Road

Folkestone  
CT19 4EP

**£360,000 FREEHOLD**

Welcome to this stunning 3/4 bedroom terrace house located in the charming village of Cheriton. This beautiful home boasts a loft room, perfect for an additional bedroom or office space, along with a convenient utility room and outside office - ideal for those who work from home.

Oozing with character and charm, this property is in excellent condition throughout, making it move-in ready for its new owners. Enjoy entertaining guests in the south facing garden, offering ample space for outdoor dining and relaxation.

Located just a stone's throw away from the West train station, commuting has never been easier. Don't miss out on the opportunity to call this exquisite house your new home! Contact us today to schedule a viewing.

For your chance to view call SOLE agent Burnap and Abel now on 01303 258590.





**Lounge**

13' 11" x 11' 5" (4.24m x 3.48m)

**Dining Room**

11' 6" x 9' 5" (3.51m x 2.87m)

**Kitchen**

15' 11" x 10' 3" (4.85m x 3.12m)

**Utility**

11' 3" x 5' 9" (3.43m x 1.75m)

**Bedroom**

14' 10" x 13' 11" (4.52m x 4.24m)

**Bedroom**

10' 3" x 8' 0" (3.12m x 2.44m)

**Bathroom**

7' 8" x 6' 7" (2.34m x 2.01m)

**Bedroom**

9' 5" x 8' 9" (2.87m x 2.67m)

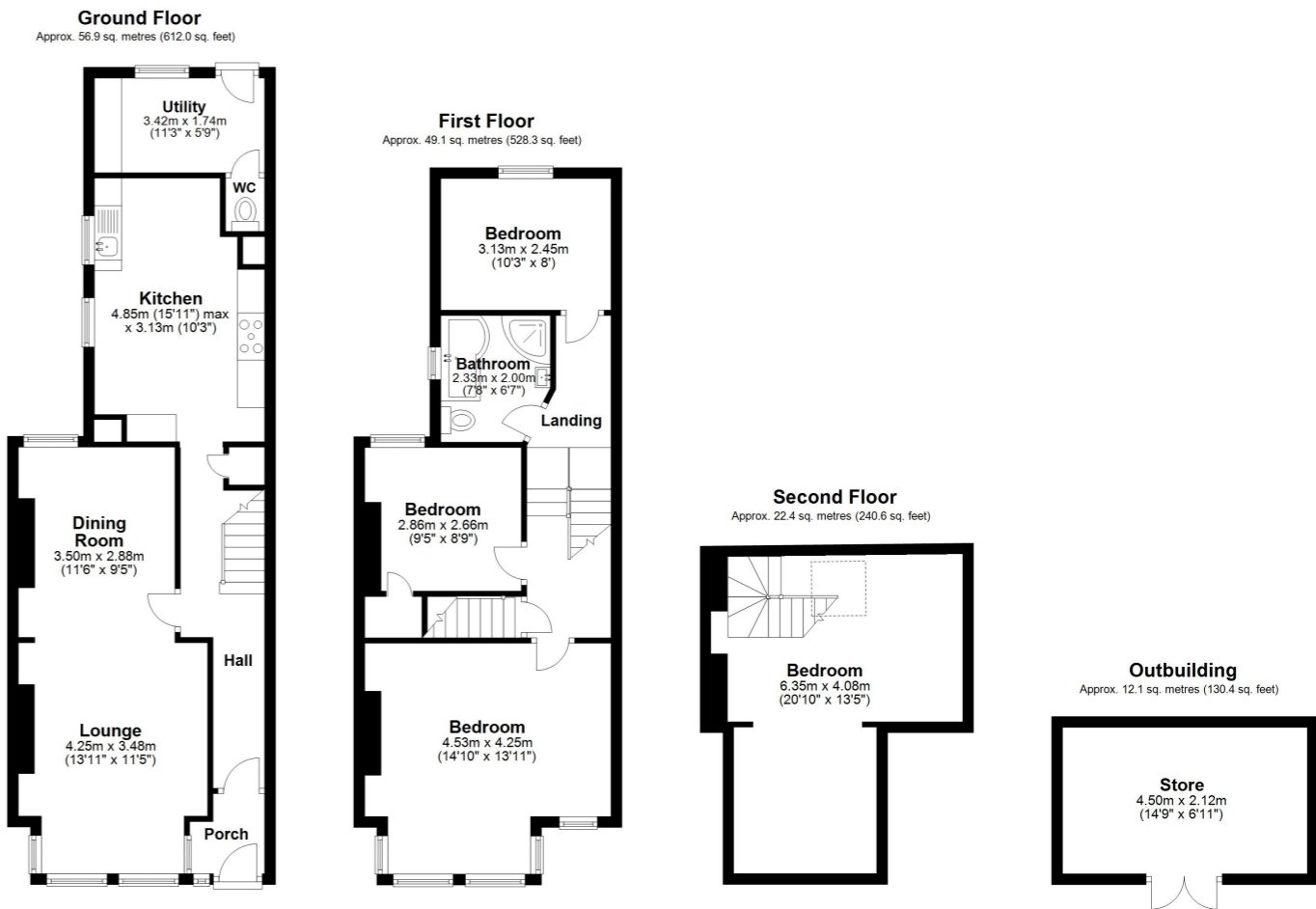
**Bedroom**

20' 10" x 13' 5" (6.35m x 4.09m)

**Garden**

**Office/Store**

14' 9" x 6' 11" (4.50m x 2.11m)



Total area: approx. 140.4 sq. metres (1511.4 sq. feet)

Whilst every attempt has been made to ensure the accuracy of the floor plan contained here, measurements of doors, windows, rooms and any other items are approximate and no responsibility is taken for any error, omission or mis-statement. This plan is for illustrative purposes only and should be used as such by any prospective purchaser.  
Plan produced using PlanUp.

