



Holdbrook

Hitchin | Hertfordshire | SG4 9QW

www.stonegate-estates.co.uk



HOLDBROOK

Property Description

This mid-terrace house in the popular residential area of Hitchin is a great opportunity for young families looking to create their own dream home.

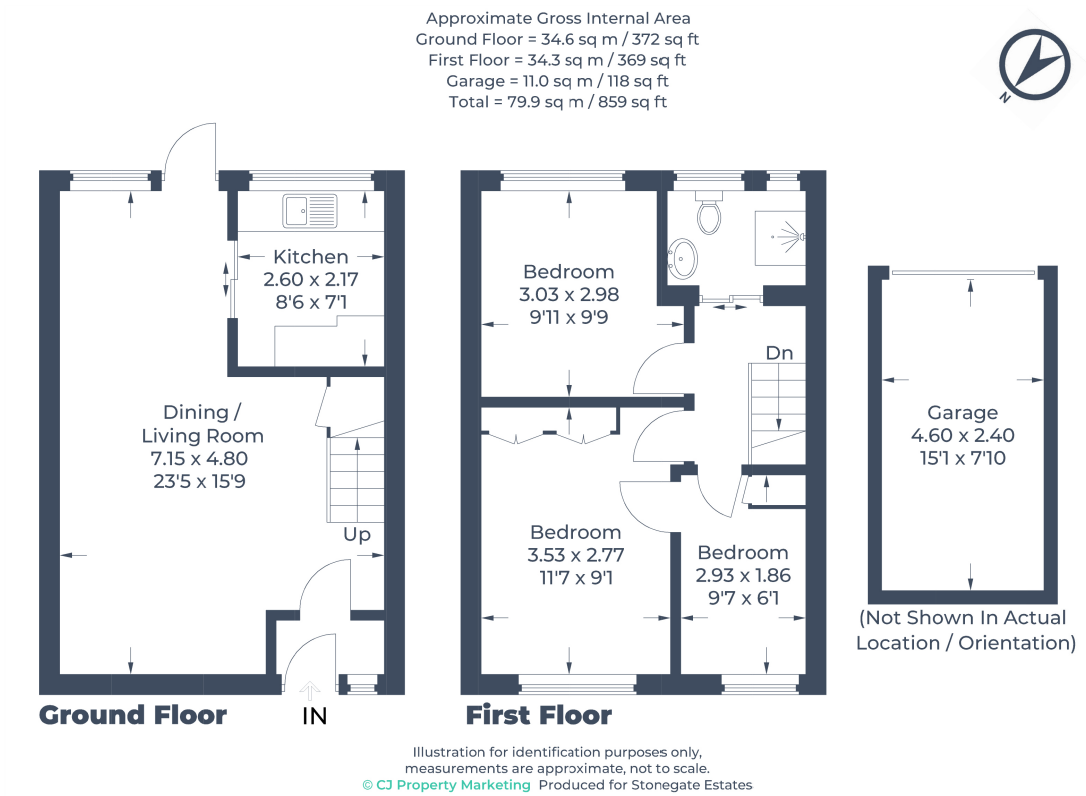
This is a great opportunity to refurbish and modernise into the home you are looking for, this property boasts two double bedrooms, one single bedroom, a family bathroom, and a spacious lounge/diner perfect for family gatherings. With ample communal parking available outside, convenience is key for busy families on-the-go.

Located in the sought-after SG4 9.. postcode, this home is just a stone's throw away from popular schools, the town centre and market place, the train station, and major road connections via the A1.

Measuring at 741 sq.ft, this property provides plenty of space for your growing family. Don't miss out on the chance to make this house your own and schedule a viewing today.



£375,000 Freehold





- Three Bedrooms
- SG4 9.. Postcode
- Lounge/Diner
- Gas Radiator Heating
- Fabulous Location For Hitchin Schools
- Enclosed Rear Garden
- Garage in Block
- Great Opportunity To Modernise

EPC Rating: C

Stonegate Estate Agents

01462 438979

sales@stonegate-estates.co.uk | www.stonegate-estates.co.uk

