



Apartment 4 The Downs, Union Mills, Isle of Man. IM4 4NQ

Unique spacious ground floor apartment offering great space and light through the rooms providing a lovely home in a semi rural location on the outskirts of Union Mills.



£545,000 Leasehold

PROPERTY DESCRIPTION

The Downs Apartments are a set of four luxury apartments located in Union Mills, situated in a quiet cul-de-sac position. The apartments are spacious, well-appointed, and have private access from the road.

Apartment 4 is on the ground floor and has its own entrance via the sunroom to the west of the apartment. In addition there is a spacious terrace area to the front allocated to Apartment 4 only. They also have a detached double garage with electric up and over garage door and additional outside storage. The apartments offer stunning views over the grounds and the surrounding countryside.

Stunning space of almost 3000 sq ft offering three bedrooms, two of which have En-suite bathrooms and walk-in wardrobes. Large living room, dining room, fitted breakfast kitchen, and a sun room.

MANAGEMENT Active management company in place comprising 4 equal shareholder owners of flats of the building registered as The Downs Management Company. The Company is responsible for cleaning and maintaining the Common Area including Painting Exterior, Insurances, Garden and Boundary, Maintenance of the development.

SERVICE CHARGE £2,400 approx per annum (£600 per quarter)

TENURE Remainder of 999 year lease hold from approx. 1990.

RATES For latest rateable value please contact the Rates Office on 685661.

DISCLAIMER Whilst Manxmove Ltd believe that these details are correct, neither Manxmove Ltd or their clients guarantee their accuracy in any way. Consequently, these details are not to be used to form part of any legally binding contract. Prospective purchasers or tenants are advised to visit this property to satisfy themselves as to the correctness of these details. Please note, we use wide angle camera lenses in order to show as much of each room as possible. This is not intended to mislead any prospective purchasers or tenants in any way and an honest verbal description is always available prior to viewing if required.

FEATURES

- Spacious Ground Floor Apartment with Rural Views
- Nestled in Landscaped Communal Gardens
- Spacious Lounge, Dining Room, Breakfast Kitchen
- Master Bedroom Suite with En-Suite & Dressing Room
- 2 Further Double Bedrooms (1 En-Suite)
- Family Bathroom
- Detached Double Garage & Outside Store
- Oil Fired Central Heating
- Active Management Company & Vacant Possession

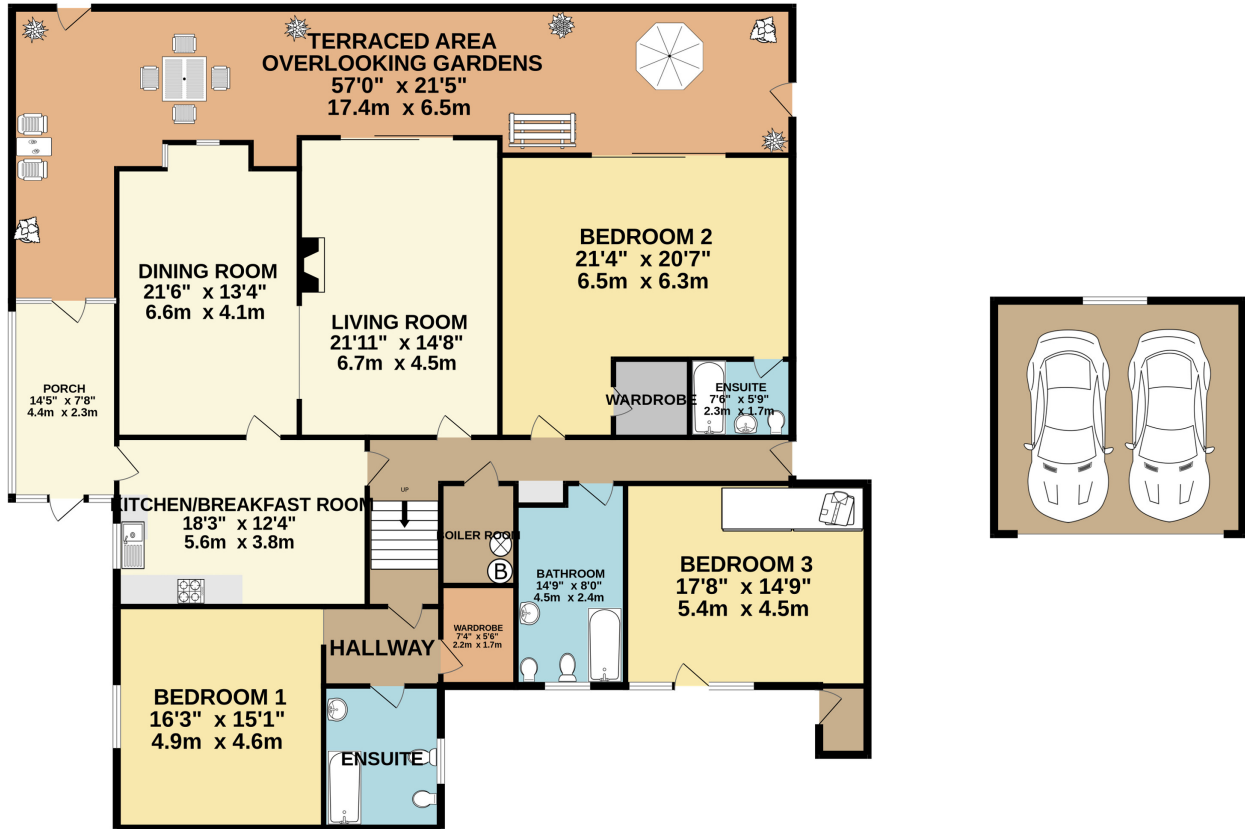


Property Images



FLOORPLAN

GROUND FLOOR 3366 sq.ft. (312.7 sq.m.) approx.



SPACIOUS 3 BED, 3 BATH APARTMENT

TOTAL FLOOR AREA : 3366 sq.ft. (312.7 sq.m.) approx.

Whilst every attempt has been made to ensure the accuracy of the floorplan contained here, measurements of doors, windows, rooms and any other items are approximate and no responsibility is taken for any error, omission or mis-statement. This plan is for illustrative purposes only and should be used as such by any prospective purchaser. The services, systems and appliances shown have not been tested and no guarantee as to their operability or efficiency can be given.
Made with Metropix ©2023

DISCLAIMER: Whilst Manxmove Ltd believe that these details are correct, neither Manxmove Ltd or their clients guarantee their accuracy in any way. Consequently, these details are not to be used to form part of any legally binding contract. Prospective purchasers or tenants are advised to visit this property to satisfy themselves as to the correctness of these details. Please note, we use wide angle camera lenses in order to show as much of each room as possible. This is not intended to mislead any prospective purchasers or tenants in any way and an honest verbal description is always available prior to viewing if required.