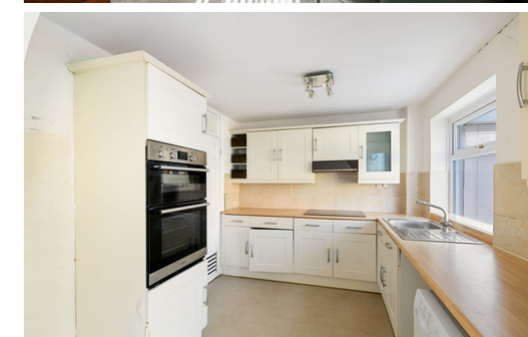


26 Romney Avenue

Folkestone
CT20 3QJ

£310,000 FREEHOLD

FOR SALE WITH BURNAP + ABEL... Welcome to your new family home in the charming Enbrook Valley! This three bedroom semi-detached house is perfectly situated close to the sea, offering stunning views and a tranquil atmosphere. Located just minutes away from the convenient West Station, commuting will be a breeze for you and your loved ones. The potential is endless with this property, as it is in need of light renovation to make it truly shine. This ideal family home features a garage and off-road parking, providing ample space for all your vehicles. Don't miss out on this incredible opportunity to create your dream living space in Enbrook Valley. Schedule a viewing today and start envisioning the boundless possibilities that await you in this fantastic property! This property is CHAIN FREE and keys are available at your convenience. For your chance to view call sole agent Burnap and Abel now on 01303 258590.



Lounge

17' 0" x 12' 4" (5.18m x 3.76m)

Dining Room

12' 1" x 6' 11" (3.68m x 2.11m)

Kitchen

9' 9" x 8' 10" (2.97m x 2.69m)

Conservatory

13' 4" x 9' 11" (4.06m x 3.02m)

Bedroom

10' 4" x 9' 9" (3.15m x 2.97m)

Bedroom

9' 2" x 6' 11" (2.79m x 2.11m)

Bathroom

6' 10" x 5' 7" (2.08m x 1.70m)

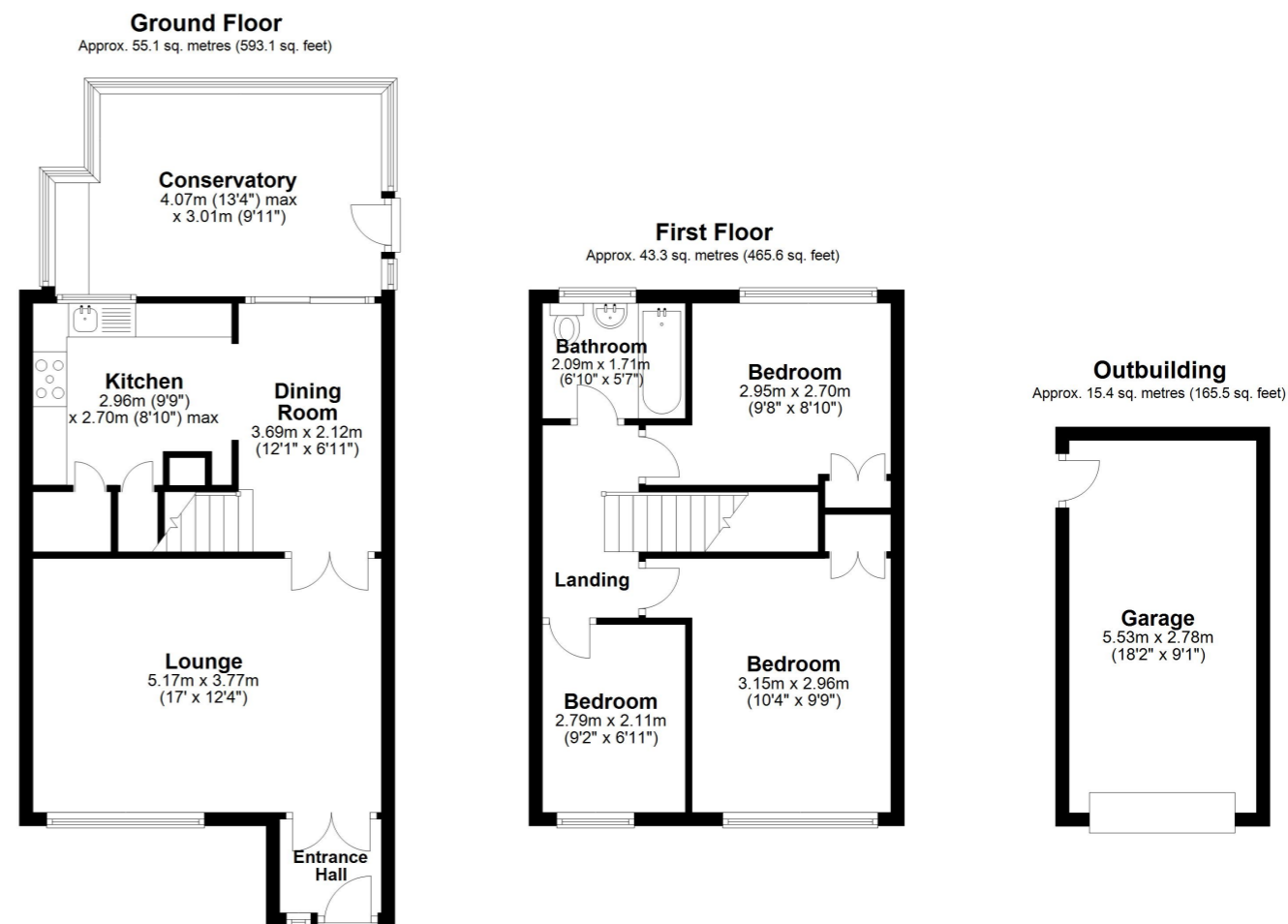
Bathroom

9' 8" x 8' 10" (2.95m x 2.69m)

Garden

Garage

18' 2" x 9' 1" (5.54m x 2.77m)



Total area: approx. 113.7 sq. metres (1224.2 sq. feet)

Whilst every attempt has been made to ensure the accuracy of the floor plan contained here, measurements of doors, windows, rooms and any other items are approximate and no responsibility is taken for any error, omission or mis-statement. This plan is for illustrative purposes only and should be used as such by any prospective purchaser.
Plan produced using PlanUp.

