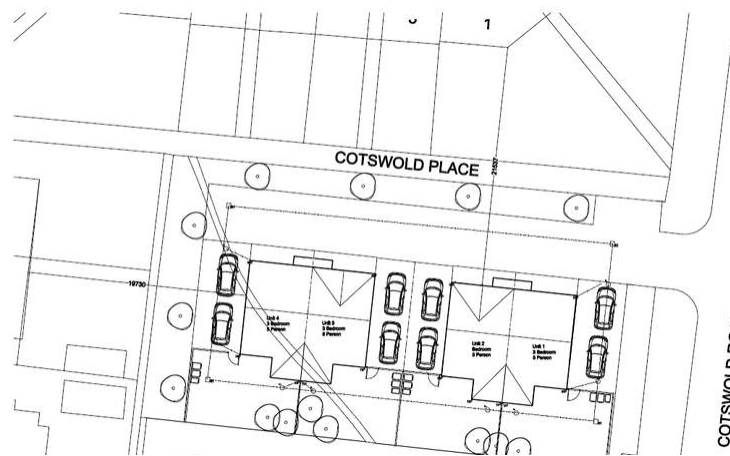
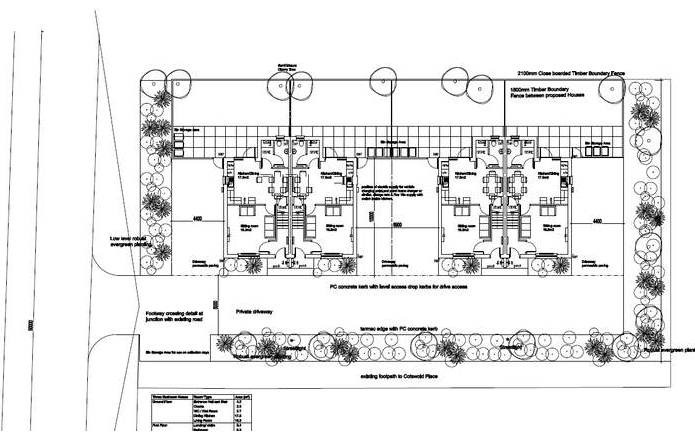




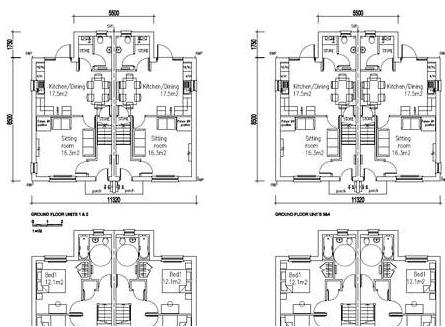
Land at, Cotswold Road, Warrington, Cheshire. WA2 9SG. £175,000



Development Opportunity | Planning Permission Approved For 4 Semi Detached Homes | Circa 0.3 Acres | Popular Residential Location | Excellent Opportunity | The planning reference is 2020/37982. |



Your next development opportunity? The site is around 0.3 acres and has full planning permission in place for the construction of 4 semi-detached homes. The well-planned homes are designed for modern living with a lounge and open-plan kitchen/diner. While the first floor has three bedrooms and a family bathroom. There are also generous gardens and off-road parking. Located in a popular residential area surrounded by similar properties these new homes when constructed would be very sought after. Full plans can be found with reference is 2020/37982. All enquiries to our Land and New Homes team on 01925 906280.



Contact your local office to arrange a viewing:

- Padgate:** 01925 479334
- Great Sankey:** 01925 454300
- Winwick:** 01925 232146
- Stockton Heath:** 01925 453400
- St.Helens:** 01744 754120
- Wigan:** 01942 498862
- Culcheth:** 01925 764744
- Ashton-In-Makerfield:** 01942 364446
- Newton-Le-Willows:** 01925 907770
- Commercial Office:** 01925 907709
- Lettings Head Office:** 01925 873533
- Financial Services:** 01925 221234

Viewing Arrangements

Viewing is strictly by appointment only through Ashtons Estate Agency.

Disclaimer Property Details

These particulars, whilst being believed to be accurate are set out as a general outline only for guidance and do not constitute any part of an offer or contract. Intending purchasers should not rely on them as statements of representation of fact, but must satisfy themselves by inspection or otherwise as to their accuracy. We have not carried out a detailed survey nor tested the services, appliances and specific furnishings. The measurements given are approximate. No person in this firm's employment has the authority to make or give any representation or warranty in respect of the property.

All details, photographs and floorplans are the copyright of Ashtons Estate Agency.



How much you can borrow?
Speak to a mortgage expert in your local office.

Ashtons Financial Services

Ashtons.net rightmove

PrimeLocation.com Zoopla.co.uk

