



The Green, Stotfold, Hitchin, Hertfordshire. SG5 4DG





2 Bedroom Detached Bungalow

Guide Price £350,000 Freehold

A pleasant CHAIN FREE detached bungalow in the sought after Stotfold location of 'The Green'.

The accommodation comprises entrance hall, a spacious living room, garden room, fitted kitchen, two bedrooms and a wet room. Externally is a block paved frontage enclosed by a picket fence and an attractive, private rear garden. For further details and your appointment to view please contact Satchells Stotfold.



- Detached bungalow
- Two bedrooms
- Spacious living room
- Fitted kitchen
- Garden room
- Wet room
- Attractive rear garden
- Gas central heating
- Chain free
- EPC rating C. Council tax band C

Ground Floor:**Front Door:**

Double glazed front door.

Hallway:

Radiator. Telephone point. Loft access. Airing cupboard. Wall mounted thermostat control. Coving to ceiling. Carpet as fitted.

Living Room:

Abt. 19' 11" x 0' 7" (6.07m x 0.18m) A good size living room with double glazed sliding patio doors leading out to the garden room. Television point. Radiator. Coving to ceiling. Carpet as fitted.

Garden Room:

Abt. 6' 2" x 3' 10" (1.88m x 1.17m) Door to rear garden. Cork tiled flooring.

Kitchen:

Abt. 12' 8" x 7' 8" (3.86m x 2.34m) A well appointed kitchen comprising a range of eye and base level units with ample work surfaces. Single drainer sink unit. Gas and electric cooker points. Plumbing for automatic washing machine. Space for tumble dryer. Wall mounted gas boiler. Tiled splash back area. Double glazed window to front. Radiator. Coving to ceiling. Vinyl tiled flooring.

Bedroom One:

Abt. 11' 3" x 7' 9" (3.43m x 2.36m) Double glazed window to front. Radiator. Coving to ceiling. Carpet as fitted.

Bedroom Two:

Abt. 7' 11" x 7' 9" (2.41m x 2.36m) Double glazed Velux window. Radiator. Coving to ceiling. Carpet as fitted.

Wet Room:

A fully tiled wet room with electric shower, wash hand basin and low level WC. Double glazed window to side. Shaver point. Radiator. Vinyl flooring.

Outside:

Front Garden:

A block paved frontage enclosed with a picket fence.

Rear Garden:

An attractive, enclosed rear garden with a paved patio area. Established lawn. Mature shrubs and trees. Timber shed to remain.

Additional Information:

Agents Note:

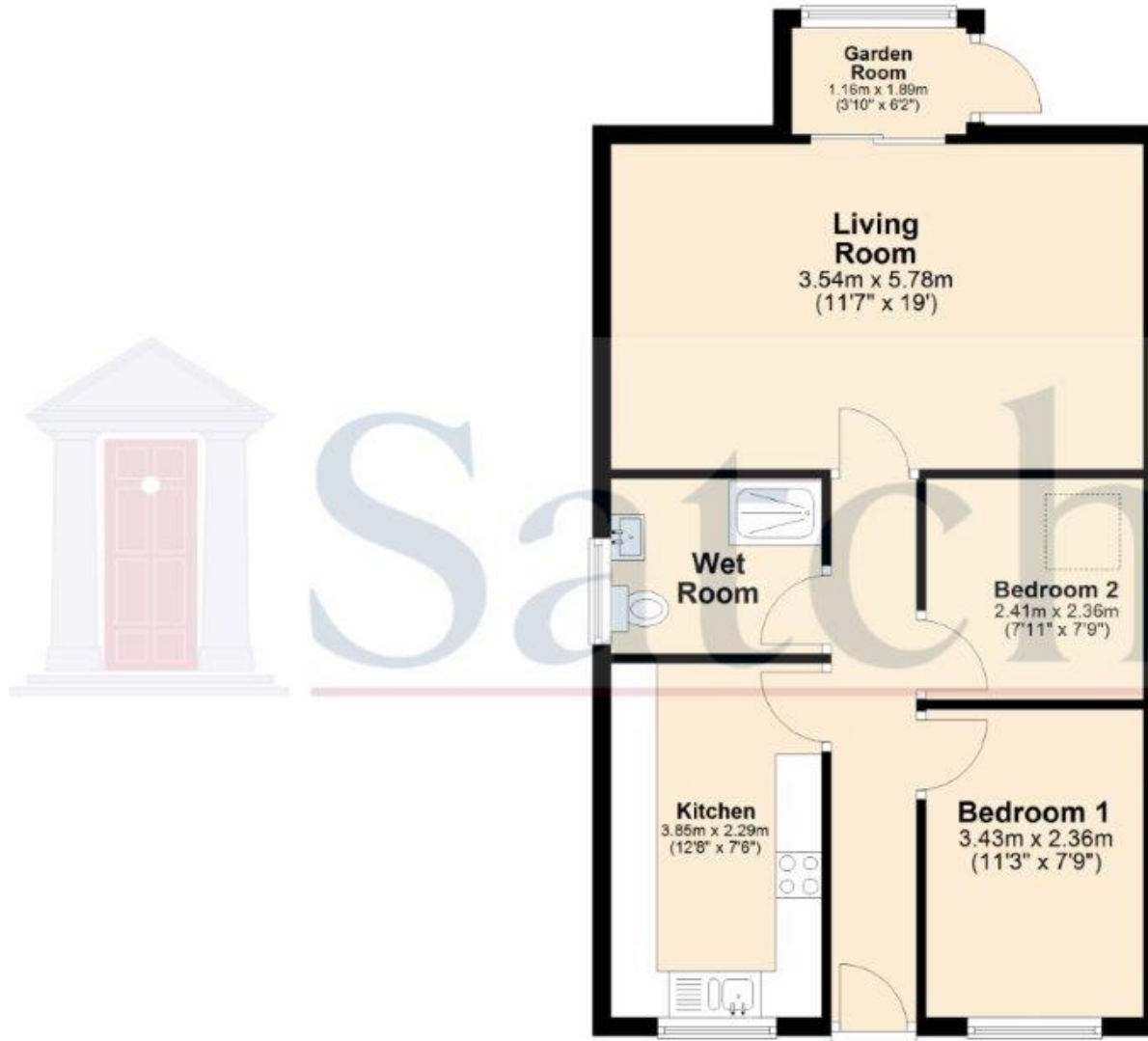
Draft details yet to be approved by the vendor and may be subject to change.





These particulars are a guide only and do not constitute an offer or a contract. The floor plan is for identification purposes only and not to scale. All measurements are approximate and should not be relied upon if ordering furniture, white goods and flooring etc. We have presented the property as we feel fairly describes it but before arranging a viewing or deciding to buy, should there be anything specific you would like to know about the property please enquire. Satchells have not tested any of the appliances or carried out any form of survey and advise you to carry out your own investigations on the state, condition, structure, services, title, tenure, and council tax band of the property. Some images may have been enhanced and the contents shown may not be included in the sale. Satchells routinely refer to 3rd party services for which we receive an income from their fee. If you would like us to refer you to one of these services please ask one of our staff who will pass your details on. We advise you check the availability of the property on the day of your viewing.

Ground Floor



For illustrative purposes only - NOT TO SCALE - Measurements shown are approximate. The size and position of doors, windows, appliances and other features are approximate.
Plan produced using PlanUp.