



22, Olympus Road

Henlow,
Bedfordshire, SG16 6HD

O.I.E.O £300,000

country
properties

Offered with no upward chain this 2 double bedroom home is presented in excellent condition and is an ideal first step onto the property ladder.

Ground Floor

Entrance Hall

Door into Living room

Living Room

15' 5" x 10' 8" (4.70m x 3.25m) Multi pane double glazed window to front. Radiator. Door into Inner Lobby

Inner Lobby

Stairs raising to first floor. Radiator. UPVC double glazed door onto rear garden. Opening to Utility cupboard with work surface & tumble dryer under (to remain). Obscure double glazed window to rear. Door into Kitchen/Diner.

Kitchen/Diner

13' 0" x 8' 6" (3.96m x 2.59m) A range of wall & base units with roll edge worksurfaces over & upstands. Inset ceramic sink & drainer unit with swan neck mixer tap over. Built in electric oven & gas hob with glass splashback & extractor hood over. Integrated dishwasher. Integrated washing machine. Fridge freezer (to remain). Wall mounted gas boiler enclosed in cupboard. Radiator. Multi pane double glazed window to rear.

First Floor

Landing

Multi pane double glazed window to front. Radiator. Loft access. Storage cupboard. Doors to all rooms



Bedroom 1

12' 5" x 9' 11" (3.78m x 3.02m) Multi pane double glazed window to front. Radiator.

Bedroom 2

12' 5" x 9' 6" (3.78m x 2.90m) Multi pane double glazed window to rear. Radiator.

Bathroom

Suite comprising: panel enclosed 'P' shaped bath with main shower over & curved side screen.

Pedestal wash hand basin. Low level WC. Tiled splashbacks.

Extractor fan. Obscure double glazed window to rear. Chrome heated towel rail.

Outside

Front Garden

Laid to lawn with paved pathway to front door. Allocated parking to front (numbered 22 OR).

Rear Garden

Paved patio area with paved pathway leading to gated access to rear. Water tap. Power points. Timber shed (to remain).

Agents Note

The owner informs us there is a service charge of approx. £1,000 per year to cover water and sewage charges and the upkeep of communal areas and the private road.

We suggest any buyer confirms this with their legal representative prior to exchange of contracts.

For all your mortgage needs contact Dawn Olney at Mortgage Vision on 01462 811822 or email: enquiries@mortgagevision.co.uk

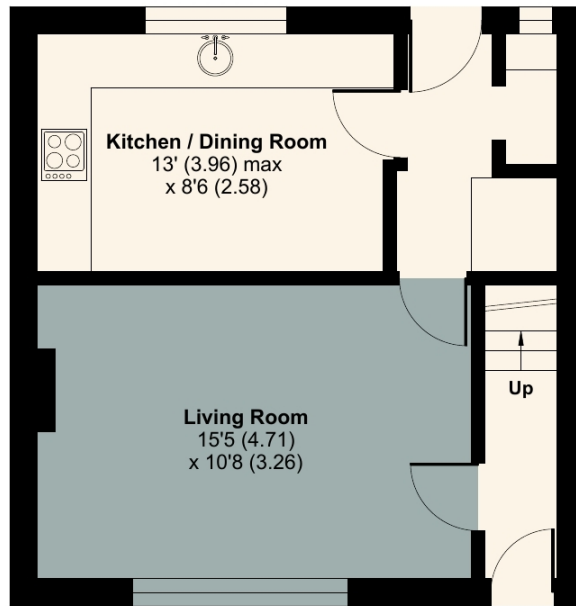
PRELIMINARY DETAILS - NOT YET APPROVED AND MAY BE SUBJECT TO CHANGES



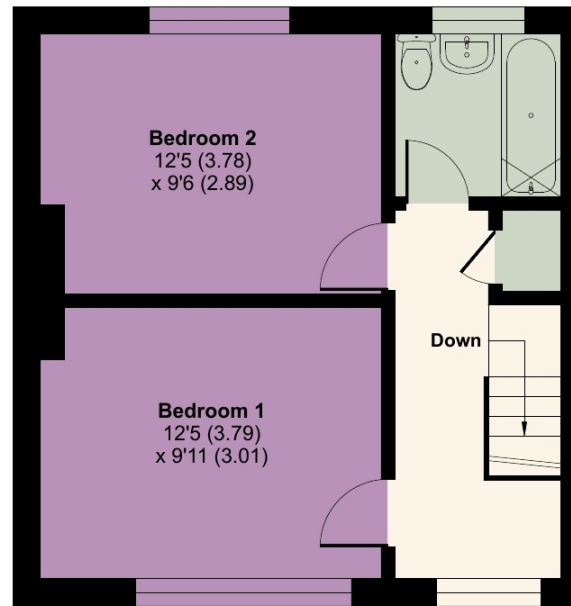


Approximate Area = 752 sq ft / 69.8 sq m

For identification only - Not to scale



GROUND FLOOR



FIRST FLOOR

 Floor plan produced in accordance with RICS Property Measurement 2nd Edition, Incorporating International Property Measurement Standards (IPMS2 Residential). © nche.com 2026. Produced for Country Properties. REF: 1439676



All measurements are approximate and quoted in metric with imperial equivalents and for general guidance only and whilst every attempt has been made to ensure accuracy, they must not be relied on. The fixtures, fittings and appliances referred to have not been tested and therefore no guarantee can be given and that they are in working order. Internal photographs are reproduced for general information and it must not be inferred that any item shown is included with the property. For a free valuation, contact the numbers listed on the brochure.

Viewing by appointment only

Country Properties | 46-48, High Street | SG17 5DG

T: 01462 811822 | E: shefford@country-properties.co.uk

www.country-properties.co.uk

country properties