



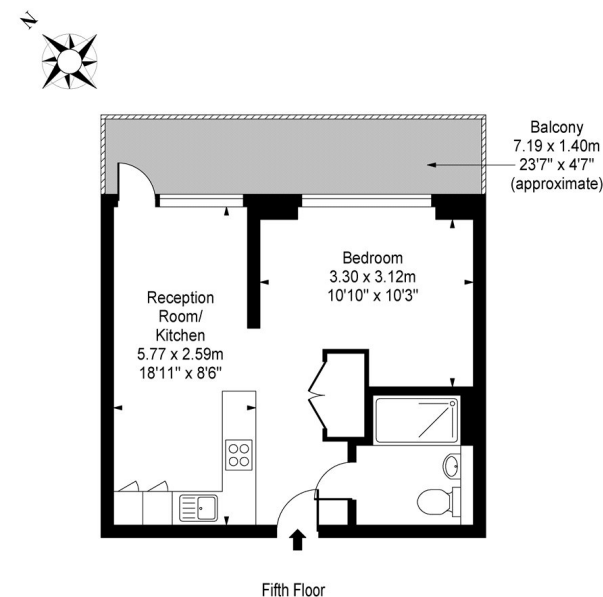
Copenhagen Court, London, Pell Street SE8 5ES

Guide Price £325,000-£350,000 A well designed contemporary Manhattan style apartment with terrace and high specification interior, located within a sought after modern development moments from Surrey Quays station, shopping centre and Greenland Dock.

Occupying part of the fifth floor, this impressive apartment comprises entrance area with storage cupboard, reception room with door leading to private terrace providing views towards Canary Wharf, dining area, stylish open plan fitted kitchen with work tops and integrated appliances, bedroom and shower room/WC. The apartment has the benefit of gym and concierge facilities and is considered ideal for access to Surrey Quays, Greenland Pier, Canada Water and Surrey Quays Shopping Centre.

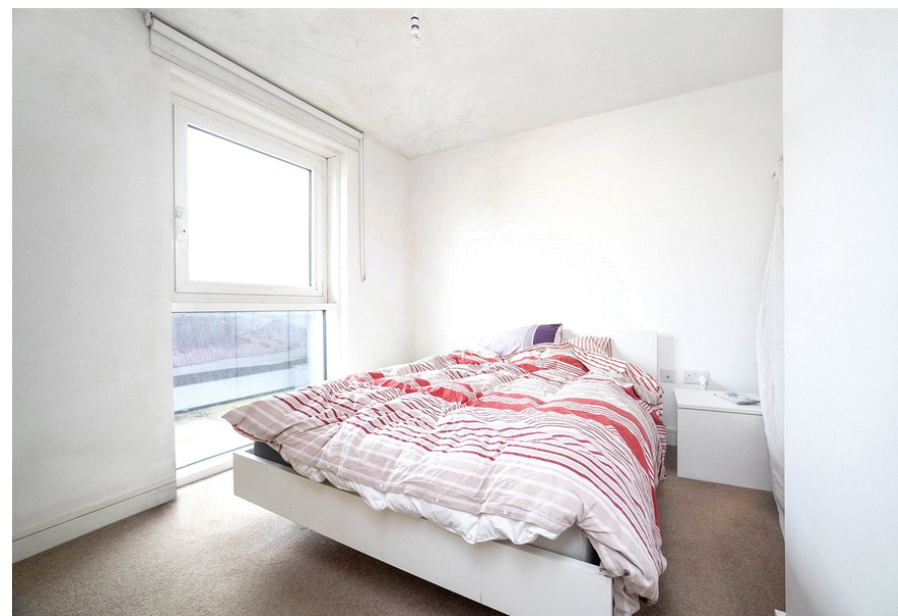
- Copenhagen Court SE8
- Manhattan Style Apartment
- Canary Wharf Views
- Residents Gym
- Excellent Location
- 402 Sq Ft
- Private Terrace
- High Specification Interior
- Concierge Facilities
- Chain Free

Copenhagen Court, Greenland Place, London, SE8



Approx Gross Internal Area 402 Sq Ft - 37.35 Sq M

This floor plan should be used as a general outline for guidance only and does not constitute in whole or in part an offer or contract.
Any intending purchaser or lessee should satisfy themselves by inspection, searches, enquiries and full survey as to the correctness of each statement.
Any areas, measurements or distances quoted are approximate and should not be used to value a property or be the basis of any sale or let.





Energy Efficiency Rating		
	Current	Potential
Very energy efficient - lower running costs		
(92+) A		
(81-91) B	81	81
(69-80) C		
(55-68) D		
(39-54) E		
(21-38) F		
(1-20) G		
Not energy efficient - higher running costs		
England, Scotland & Wales	EU Directive 2002/91/EC 