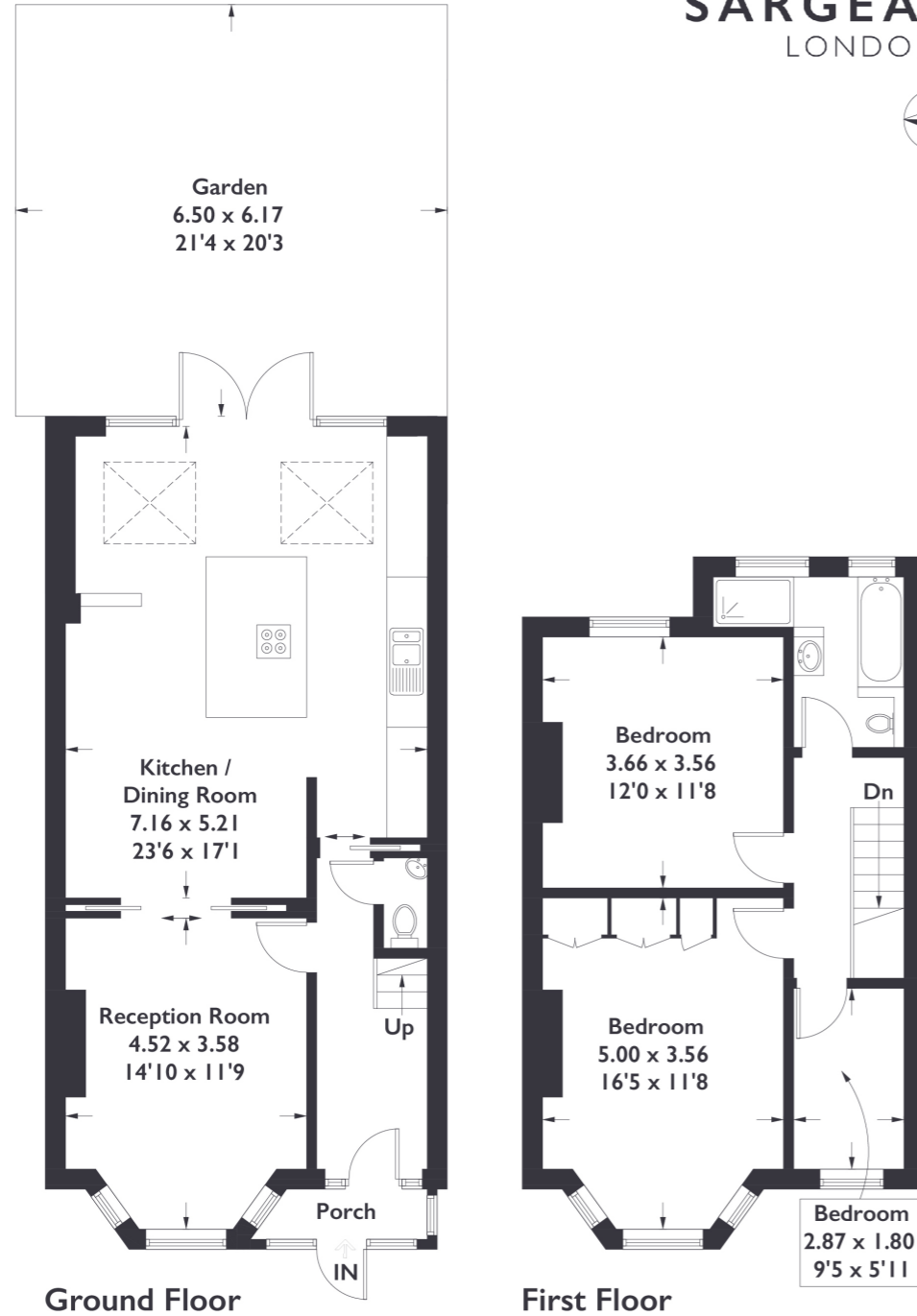


Mayfield Avenue, W13

Approximate Gross Internal Area = 114.9 sq m / 1237 sq ft



Measured in accordance with RICS Code of Measuring Practice. To be used for identification and guidance purposes only. Whilst every care is taken in the preparation of this plan, please check all dimensions, shapes and compass bearings before making any decisions reliant upon them. www.london58.com © 2023 hello@london58.com



3 BEDROOM HOUSE

Mayfield Avenue, W13
£975,000

Welcome to this stunning three bedroom, two bathroom end of terrace property in the heart of Northfields, where modern elegance meets the potential for future expansion.

This home has undergone a full renovation, showcasing a stunning and bright interior throughout. This property is fully set up for a loft extension (STPP), setting the stage for a truly exceptional living experience.

FEATURES

- End Of Terrace
- Three Bedrooms
- One Bathroom/Downstairs WC
- Ready For Loft Conversion (STPP)
- Northfields Station
- Fielding Primary Catchment
- EPC Rating C



3 BEDROOM HOUSE
Mayfield Avenue, W13
£975,000

Step inside, the breathtaking interior seamlessly blends sophistication with modern comfort.

As you step into the large open plan kitchen and living area, you're greeted by a contemporary design that includes electric Velux windows, cast iron radiators, and a seamless connection to a separate reception room at the front of the house. This space leads effortlessly to a gorgeous southeast facing garden, perfect for basking in natural light and enjoying outdoor moments. The upper floor features large and spacious bedrooms adorned with high ceilings and fireplaces, offering a perfect balance of charm and sophistication. The bathroom featuring a side shower, adds a touch of luxury to your daily routine.

With its impeccable interior, potential for expansion, and charming details, this Northfields gem is not just a house; it's an invitation to elevated living. EPC Rating C.

